



A000601373

OFFICE OF THE COUNTY RECORDER
CASS COUNTY, MINNESOTA
CERTIFIED, FILED, AND/OR
RECORDED ON

4/3/2014 11:29:44 AM

AS DOC #: A000601373

PAGES: 2

REC FEES: 0.00

KATHRYN M. NORBY
CASS COUNTY RECORDER

BY SR _____ Dep

Index No. V-15

CERTIFICATE OF LOCATION OF GOVERNMENT CORNER

North Quarter Corner of Section 34
Township 145 N, Range 27 W, 5th P.M.
STATE OF MINNESOTA, COUNTY OF CASS

On 7/31/2012, found a(n): Badly worn metal location poster
on a dead 5" pine stub

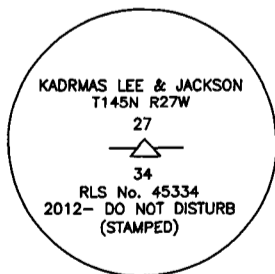
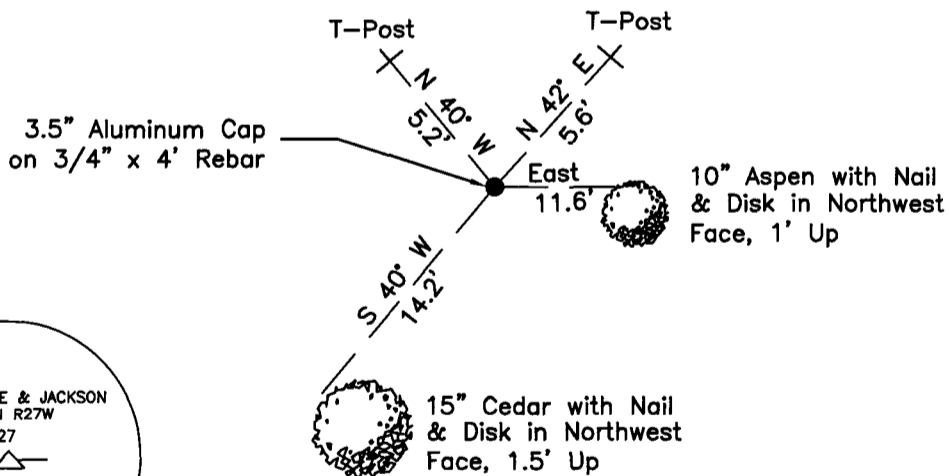
left monument as found lowered monument
 removed monument (explain) raised monument

On 7/31/2012, set a(n): 3.5" Aluminum Cap on 3/4" x 4'
Rebar

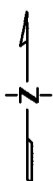
See "Statement of Evidence" for further details (on back)

(reserved for recording data)

NOTE: On Edge of Swamp, 2' Above Ground



"SKETCH OF REFERENCE TIES" (not to scale - bearings are magnetic)



Ties are measured to center of monument
unless otherwise noted.

UNITS = Metric English

UTM COORDINATES, ZONE 15

Northing: 17202963.89

Easting: 1371767.53

NAD 83/1996 Adjustment.

Obtained by RTK GPS observations.

I hereby certify that this survey, plan, or report was prepared by me or under my direct supervision, and that
I am a duly Licensed Land Surveyor under the laws of the State of Minnesota.

Ross Wamre
signature

3/24/14
date

Ross Wamre, Minnesota License No. 45334





STATEMENT OF EVIDENCE: Quarter Corner to Sections 27 and 34 of Township 145 North, Range 27
West of the 5th Principal Meridian.

1873; This corner was originally established by P. H. Conger, his field notes indicate that this corner was marked by a post and witnessed by:

Tamarack 3" dia. South 10^o West, 16 Links
Tamarack 3" dia. North 11^o West, 19 Links

1934; H.A. Brill, Chief of Party, USFS 874 forms, found a wooden stake partially rotten at ground line 56" above ground witnessed. Information on file with the USFS office in Cass Lake.

1946; State of Minnesota Department of Highways Right-of-Way Map Index map file 13-12 shows a scribed post in place at this corner location. Information on file with the Minnesota Department of Transportation.

1959; S. Morrison, USFS personnel, 874 forms filed in USFS office in Cass Lake, found a wooden stake in place and witnessed by:

Spruce 2" South, 6 Links, with a metal location poster facing west

2012; A Kadrmas, Lee & Jackson Survey crew completed a field search for this corner position and found the 1959 BT, Spruce now dead with a badly worn metal location poster.

2012; Ross Wamre, RLS #45334, after analysis of record and survey information set a 3 ½" Aluminum Cap on a 3/4" x 4' rebar, flush 6 links south based from 1959 tie recovery. Witnesses were established as shown on the face of this certificate.

Contacts pertaining to this corner are as follows:

- Cass County Recorder's Office
- Cass County Engineers Office
- Cass County Surveyors Office
- Northern Engineering and Consulting Inc.
- United States Forest Service
- MnDOT – District Office 2
- Bureau of Indians Affairs – Bemidji
- Bureau of Land Management's (BLM) Northeastern States Field Office