

CERTIFICATE OF LOCATION OF GOVERNMENT CORNER

Standard South Quarter Corner of Section 35
Township 145 N , Range 27 W , 5th P.M.
STATE OF MINNESOTA, COUNTY OF CASS



A000601094

**OFFICE OF THE COUNTY RECORDER
CASS COUNTY, MINNESOTA
CERTIFIED, FILED, AND/OR
RECORDED ON**

3/20/2014 11:04:08 AM

AS DOC #: A000601094

PAGES: 2

REC FEES: 0.00

**KATHRYN M. NORBY
CASS COUNTY RECORDER**

BY SR _____ Dep

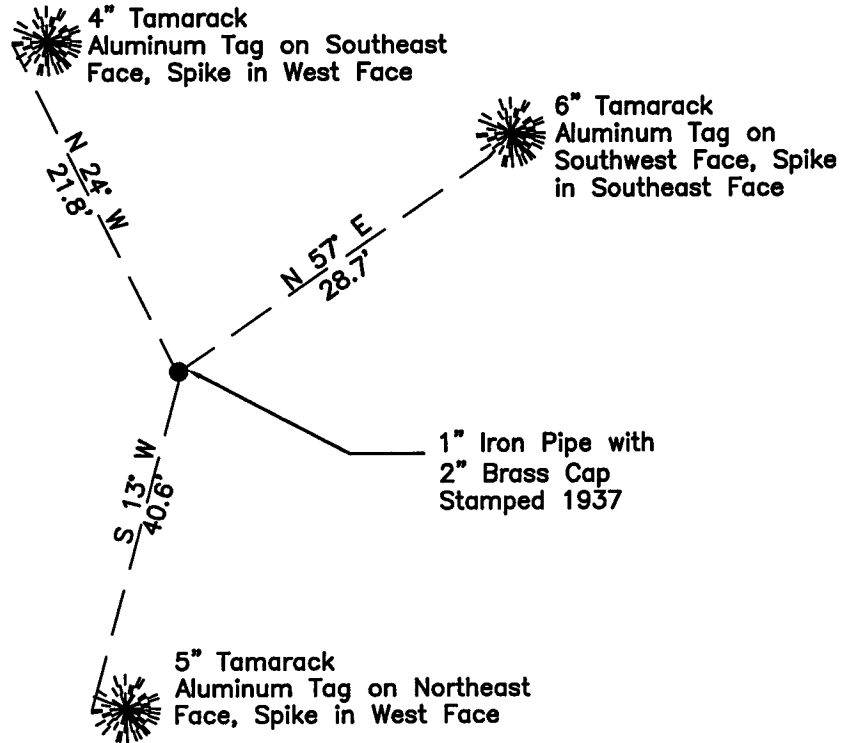
On 06/01/2010, found a(n): 1" Iron Pipe with a 2" Brass Cap
DATE
Stamped 1937 Flush

- left monument as found
- lowered monument
- removed monument (explain)
- raised monument

On _____, set a(n): _____
DATE

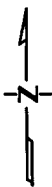
See "Statement of Evidence" for further details (on back)

(reserved for recording data)



35

SC



"SKETCH OF REFERENCE TIES" (not to scale - bearings are magnetic)

Ties are measured to center of monument unless otherwise noted.

UNITS = Metric English

UTM COORDINATES, ZONE 15

Northing: 17197643.720

Easting: 1376797.639

NAD 83/1996 HARN Adjustment.

I hereby certify that this survey, plan, or report was prepared by me or under my direct supervision, and that I am a duly Licensed Land Surveyor under the laws of the State of Minnesota.

Ross Wamre
signature

6/25/13
date

Ross Wamre, Minnesota License No. 45334

Page 1 of 2
A000601094



STATEMENT OF EVIDENCE: Standard Corner common to Section 35 Township 145 North Range 27 West of the 5th Principal Meridian.

1871; G.R. Stuntz, for the Government Land Office established this corner and witnessed by

Tamarack 5" North 22° East, 158 links
Black Pine 5" North 84° West, 85 links

1937; GLO dependent resurvey of the Eleventh Standard Parallel North, along the South boundary of Township 145 North, through a portion of Range 26 West and through Range 27 West, 5th Principal Meridian. Hal D. Craig found no remaining evidence of the original standard corner reestablished this corner's position by proportionate distance and set an iron post, 3' long, 1" dia. 27" in the ground with brass cap marked SC, ¼ S 35, 1937, and witnessed by:

Tamarack 5" dia. North 74° East, 44 links marked SC ¼ S 35 BT
Tamarack 5" dia. North 55 ½° West, 55 links marked SC ¼ S 35 BT

2010; A Kadrmass, Lee, & Jackson survey crew found a 1" Iron Post with a 2" brass cap marked SC ¼ S 35 1937 flush with ground, witnesses found and established as shown on the face of this certificate.

2012; Ross Wamre, RLS #45334, after analysis of record and survey information accepts this monument as the correct perpetuation of the corner.

Contacts pertaining to this corner are as follows:

Cass County Recorder's Office
Cass County Engineers Office
Cass County Surveyors Office
Northern Engineering and Consulting Inc.
United States Forest Service
MnDOT – District Office 2
Bureau of Indians Affairs – Bemidji
Bureau of Land Management's (BLM) Northeastern States Field Office