



A000600960

OFFICE OF THE COUNTY RECORDER
CASS COUNTY, MINNESOTA
CERTIFIED, FILED, AND/OR
RECORDED ON

3/13/2014 2:29:46 PM

AS DOC #: A000600960

PAGES: 2

REC FEES: 0.00

KATHRYN M. NORBY
CASS COUNTY RECORDER

BY SR Dep

Page 1 of 2 A000600960

Twp 137 Rge 30 Index No. T.0-25.0

CERTIFICATE OF LOCATION OF GOVERNMENT CORNER

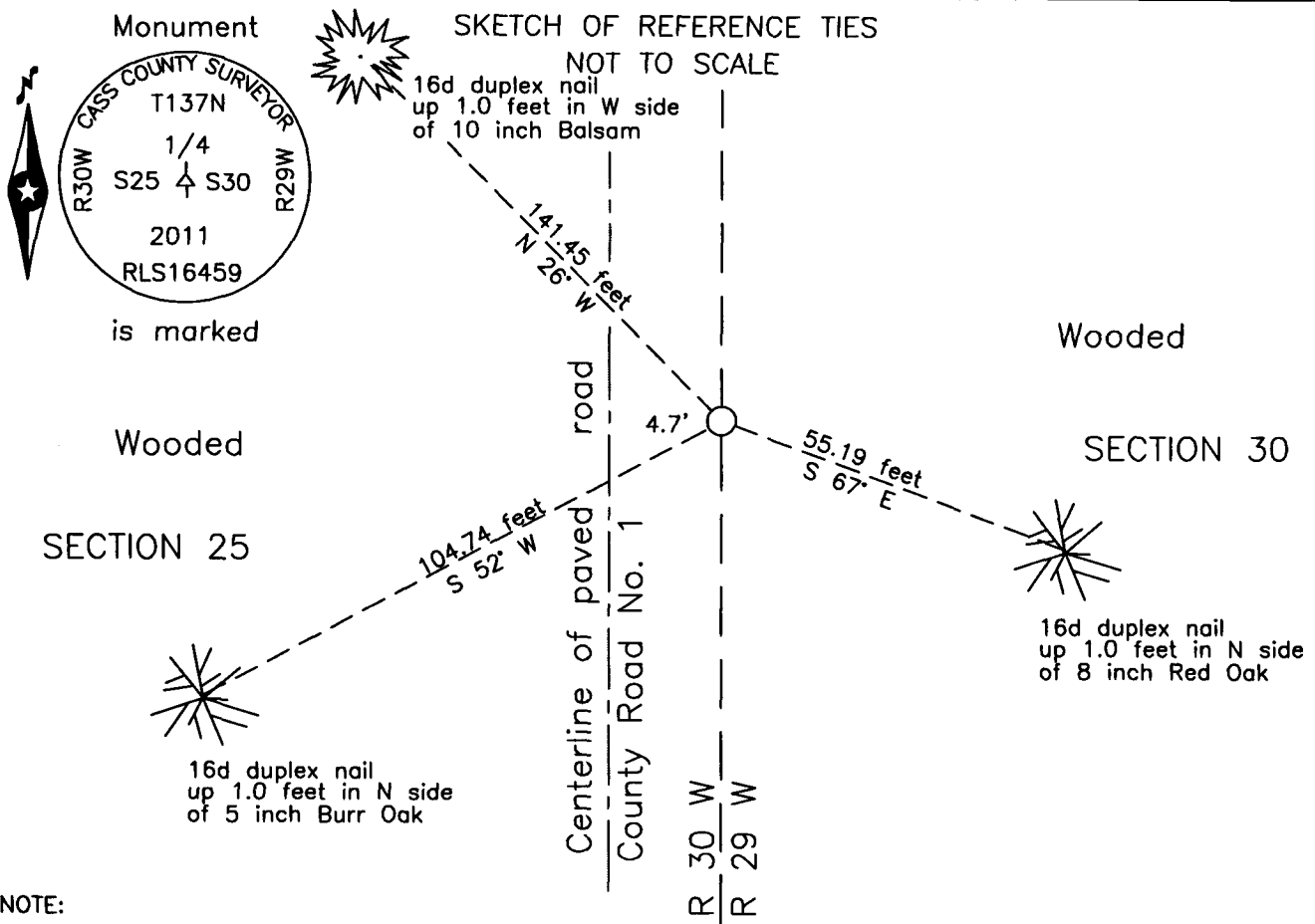
East Quarter of Section 25, Township 137 N., Range 30 W., 5th P.M.
State of Minnesota, County of Cass

At the corner location shown on the sketch:

On 13 Aug. 2010 found a squared piece of wood adjacent to a charred ring,
down 3 feet, in excavation.

left monument as found lowered monument removed monument (explain)

On 2 June 2011 placed a 1 by 14 inch aluminum tube with aluminum cap,
down 0.05 foot, 4.7 feet east of centerline of County Road Number 1.



Statement of evidence relative to this corner location is on the back of this page.

I hereby certify that this survey, plan or report was prepared by me or under my direct supervision and that I am a duly Licensed Land Surveyor under the laws of the State of Minnesota.

Terry L. Freeman, Cass County Surveyor
Date 3/12/14 MN License No. 21367



Index No. T.0-25.0

Statement of Evidence

East Quarter corner of Section 25, Township 137 North, Range 30 West, 5th Principal Meridian.

July 1865 G.B. Wright, General Land Office Deputy Surveyor set a post for the original corner in the survey of the east line of Township 137 North, Range 30 West and referenced it as follows:
10" Tamarack S 75 1/2° E 89 links (58.74 feet) 9" W. Birch N 48° W 27 links (17.82 feet)
Said records are on file with the Minnesota Historical Society, St. Paul, Minnesota, copies are filed with the Cass County Highway Department, Surveyor's Office (CCHD/SO).

1953 Cass County Highway Department(CCHD), S.A.P. 11-508-05, on file in the CCHD, plan indicates ¼ Sec. Line at Station 79+95.7.

Aug. 2002 B. Grivna, LS. 17253, certificate of survey, on file in the CCHD/SO, indicates iron monument found in place.

Aug. 2010 B. Hippen, technician and P. Swentkofske, CCHD equipment operator, notes on file in the CCHD/SO, prior to reconstruction of CSAH # 001, found a 7/8 inch outside diameter iron pipe, capped 17253 and excavated a 6 foot east-west by 30 foot north-south area based on record dimensions. The dig was 3.5 feet deep to natural ground. A squared piece of wood adjacent to a charred ring were recovered down 3 feet.

June 2011 B. Hippen, technician, notes on file in the CCHD/SO, set an aluminum Cass County monument at the charred ring location. New witnesses were established as follows:
10" Balsam N 26° W 141.45 feet 5" Burr Oak S 52° W 104.74 feet
8" R. Oak S 67° E 55.19 feet

The monument, recovered and established references for the position are shown on the face of this document.

Analysis of the recovered record data, field evidence and survey measurements, indicates that the monument set by the CCSO in 2011 is the correct perpetuation of this corner.

County Coordinates (Cass County South)

Northing 281202.15

Easting 514606.55