



A000600955

OFFICE OF THE COUNTY RECORDER
CASS COUNTY, MINNESOTA
CERTIFIED, FILED, AND/OR
RECORDED ON

3/13/2014 2:29:41 PM

AS DOC #: A000600955

PAGES: 2

REC FEES: 0.00

KATHRYN M. NORBY
CASS COUNTY RECORDER

BY SR _____ Dep

Twp 137 Rge 30 Index No. J.0-25.0

CERTIFICATE OF LOCATION OF GOVERNMENT CORNER

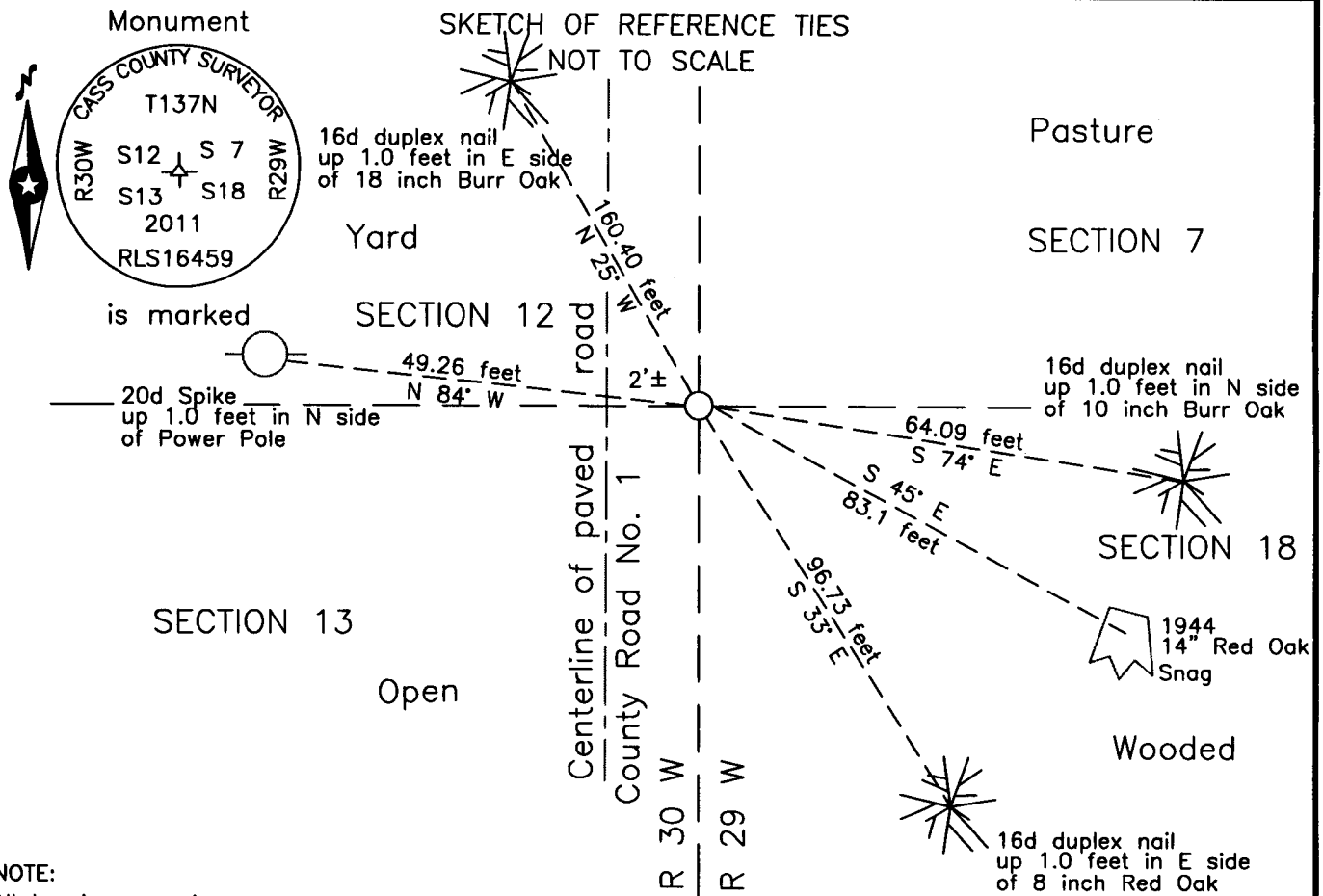
Northeast corner of Section 13, Township 137 N., Range 30 W., 5th P.M.
State of Minnesota, County of Cass

At the corner location shown on the sketch:

On 9 Sept. 2002 found a 7/8 inch outside diameter iron pipe capped RLS 17253,
on centerline of County Road Number 1.

left monument as found lowered monument removed monument (explain)

On 3 June 2011 placed a 1 by 32 inch aluminum tube with aluminum cap,
down 0.05 foot, 2 feet± east of centerline of County Road Number 1.



NOTE:
All bearings are true

Statement of evidence relative to this corner location is on the back of this page.

I hereby certify that this survey, plan or report was prepared by me or under my direct supervision and that I am a duly Licensed Land Surveyor under the laws of the State of Minnesota.

Terry L. Freeman, Cass County Surveyor
Date 3/12/14 MN License No. 21367

**Index No. J.0-25.0**Statement of Evidence**Northeast corner of Section 13, Township 137 North, Range 30 West, 5th Principal Meridian.**

- July 1865 G.B. Wright, General Land Office Deputy Surveyor set a post for the original corner in the survey of the east line of Township 137 North, Range 30 West and referenced it as follows:

5" Aspen	N 65° E	45 links (29.7 feet)	5" Aspen	N 86° W	82 links (54.1 feet)
5" Aspen	S 2° E	36 links (23.8 feet)	5" Aspen	S 15° W	39 links (25.7 feet)
- Nov. 1870 R. Cronk, General Land Office Deputy Surveyor in the subdivision of Township 137 North, Range 30 West closed on east township boundary 50 links (33.00 feet) north of a post at the subject corner. Said records are on file with the Minnesota Historical Society, St. Paul, Minnesota, copies are filed with the Cass County Highway Department, Surveyor's Office (CCHD/SO).
- Dec. 1914 C.J. White, LS 1054, S.R.H. No. 80, Transit Book #2, Ditch Books, Shelf 1, Book 21, page 1, on file in the CCHD/SO, indicates a Stake at Station 1618+02.4 for subject corner.
- May 1914 A.W. Moulster, LS 967, Field Book, on file in the CCHD/SO, Ditch Books, Shelf 1, Book 11, page 61, notes the subject corner at 2664 feet south of the W 1/4 Corner of Section 7, Twp. 137 N., Rge. 29 W and states "This cor. set by Canfield in place of Gov. stake & referenced by Auto Anderson." New witnesses as follows:

2" Pop.	S 44°20' E	59.7 feet	5" Pop.	N 57°30' E	79.15 feet
---------	------------	-----------	---------	------------	------------
- Nov. 1916 F.N. Molyneux, S.R.H. #80, Book #3, on file in the CCHD/SO, Ditch Books, Shelf 5, Book 14, page 109, indicates corner at station 1618+02.4 and the following witnesses:

Tree	N W	71.0 feet	Tree	N E	79 feet
Tree	W N W	58.2 feet	Tree	S E	53.9 feet
- Circa 1916 S.R.H. #80, Profile Book #2, on file in the CCHD/SO, Ditch Books, Shelf 2, Book 2 P, page 29, indicates a stake at station 1618+02.4 for the subject corner.
- July 1917 J.F. Pomasel, LS 1728, County Ditch No. 9, on file in the CCHD/SO, Ditch Books, Shelf 5, Book 17, page 39 and 41, notes the subject corner on centerline SRH 80at Station 0+00 for random to the West and the 1916 witnesses.
- Oct. 1944 H.J. Curo, LS 3417, Curo Book 13 A, image 7, on file in the CCHD/SO, notes the following witnesses for the subject corner:

6" W. Oak	N 19°41' E	128.60 feet	12" W. Oak	N 25°52' W	160.20 feet
4" W. Oak	S 48°02' W	45.25 feet	10" R. Oak	S 44°32' E	83.10 feet
- 1953 Cass County Highway Department(CCHD), S.A.P. 11-508-05, on file in the CCHD, plan indicates assumed corner on centerline at intersection with fence line, at Station 212+03.3 and the following witnesses:

5" R. Oak	S E	66.9 feet	P. Pole	N W	24.1 feet
-----------	-----	-----------	---------	-----	-----------
- Aug 1993 B.W. Grivna, LS 17253, Survey for Dietz Bros. Inc, copy on file in the CCHD/SO, notes indicate subject corner on centerline CSAH #001 at fence line to the east and west and the following witnesses:

PK in 12" Cul	N 45° W	43.36 feet	10" R. Oak	S 75° E	71.31 feet
P. Pole	S 89°30' W	48.12 feet	12" R. Oak	S 46° E	84.79 feet
- Aug. 1998 D. Landecker, LS 17008, Survey for Harlan Beal, copy on file in the CCHD/SO, Section Breakdown, indicates Monument Found at the subject corner.
- May 2000 B. Hippen and C. Loe, technicians, notes on file in the CCHD/SO, found 7/8" ODIP capped RLS 17253, on centerline of CSAH #001.
- Sept. 2002 B. Hippen and T. Anderson, technicians, notes on file in the CCHD/SO, found 7/8" ODIP capped RLS 17253, on centerline of CSAH #001.
- June 2011 B. Hippen, technician, notes on file in the CCHD/SO, set an aluminum Cass County monument from the recovered 1944 witness tree which agrees with bearing and distance to another possible 1944 witness tree. New witnesses were established as follows:

14" Oak snag	S 44° E	83.10 feet	18" B. Oak	N 25° W	160.40 feet
10" B. Oak	S 74° E	64.09 feet	Power Pole	N 84° W	49.26 feet
8" R. Oak	S 33° E	96.73 feet			

The monument, recovered and established references for the position are shown on the face of this document.

Analysis of the recovered record data, field evidence and survey measurements, indicates that the monument set by the CCSO in 2011 is the accepted location of this corner.

County Coordinates (Cass County South)

Northing 294432.88

Easting 514533.47