



A000600949

OFFICE OF THE COUNTY RECORDER
CASS COUNTY, MINNESOTA
CERTIFIED, FILED, AND/OR
RECORDED ON

3/13/2014 2:29:35 PM

AS DOC #: A000600949

PAGES: 2

REC FEES: 0.00

KATHRYN M. NORBY
CASS COUNTY RECORDER

BY SR _____ Dep

Page 1 of 2
A000600949

Twp 135 Rge 30 Index No. T.0-13.0

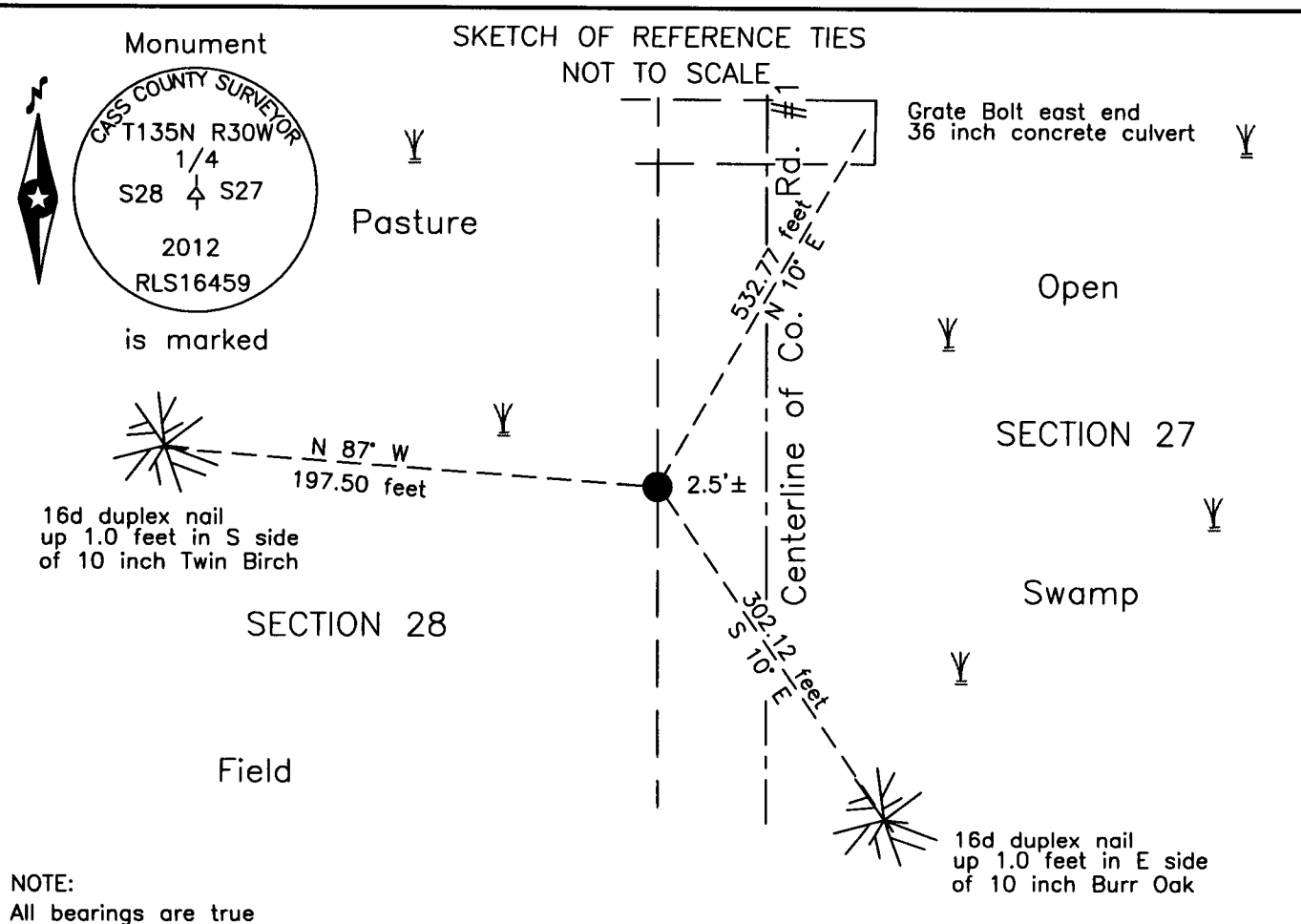
CERTIFICATE OF LOCATION OF GOVERNMENT CORNER

East Quarter corner of Section 28, Township 135 N., Range 30 W., 5th P.M.
State of Minnesota, County of Cass

At the corner location shown on the sketch:

On 23 April 2012 found _____ a wood post point, down 5.5 feet.

left monument as found lowered monument removed monument (explain)
On 24 July 2012 placed a 1 inch by 30 inch Aluminum tube with Aluminum cap
down 0.05 foot, 2.5 feet± east of centerline of County Road Number 1.



Statement of evidence relative to this corner location is on the back of this page.

I hereby certify that this survey, plan or report was prepared by me or under my direct supervision and that I am a duly Licensed Land Surveyor under the laws of the State of Minnesota.

Terry L. Freeman, Cass County Surveyor
Date 3/12/14 MN License No. 21367



Index No. T.0-13.0

Statement of Evidence

East Quarter corner of Section 28, Township 135 North, Range 30 West, 5th Principal Meridian.

- Oct. 1869 T.B. Walker, General Land Office Deputy Surveyor, set a post for the original corner in his subdivision of this township and referenced it as follows:
8" Tam N 61° W 14 links (9.24 feet) 6" Tam N 82° E 16 links (10.56 feet)
Said records are on file with the Minnesota Historical Society, St. Paul, Minnesota, copies are filed with the Cass County Highway Department, Surveyor's Office (CCHD/SO).
- Oct. 1903 W.H. Hallett, Surveyor's Report of a Township Road Order on file at the Cass County Highway Department (CCHD), indicates a road on the East line of Sections 28 and 33.
- Feb. 1913 A.W. Moulster, County Engineer, State Road #16, Book 23, Shelf 4, page 37, on file in the CCHD/SO, states "2646 - 1/4 corner - N.E. BT present."
- June 1914 C.D. Conzett, LS 428, Asst. Engineer, State Road #1, Book 3, Shelf 4, page 5 and 13, on file in the CCHD/SO, indicates Sec. Cor. at station 79+22.
- Circa 1916 C.D. Conzett, LS 428, C.J. White, LS 1054 and C.J. Barke, Asst. Engineers, Survey Record No. 331, Book B, page 472-473, State Rural Highway No. 80, on file in the CCHD/SO, indicates corner at station 79+22 of Plan 1136 State Road No. 1 and indicates a "Stake".
- Dec. 1925 W. Schultz, Deputy County Surveyor, Survey Record No. 541, Book D, page 168, on file in the CCHD/SO, states "No 1/4 Cor. found. At Sta. 26+52.2. Place 1/4 Cor. 16.5' North to Fence west."
- Feb. 1958 D. Cole, LS 1286, Cass County Engineer, C.S.A.H. No. 1, State Project 11-601-01, on file in the CCHD, indicates corner assumed on centerline and fence to west at station 563+10.
- Nov. 2005 J. Kramer, LS 23668, Certificate of Survey, Project No. FINK0501, on file in the Kramer Leas Deleo, Baxter office and a copy on file in the CCHD/SO, indicates an iron monument was set at a lost position.
- March 2009 B. Hippen, CCHD/SO technician, records of the CCHD/SO, located a magnetic reading, 1 foot, more or less, east of centerline of C.S.A.H. No. 1, this agrees with the data on Kramer's 2005 Certificate of Survey.
- April 2012 B. Hippen, CCHD/SO technician and P. Swentkofske, CCHD equipment operator, records of the CCHD/SO, prior to reconstruction of CSAH #001 excavated a 9 foot east-west by 18 foot north-south area based on record dimensions. The dig was 6 feet deep to natural soil. A 2 inch diameter wood post point was recovered down 5.5 feet, this post point is 2.5 feet, more or less, west of centerline and 11 feet, more or less, south of fence line to the west. There are no witness trees nearby.
- July 2012 B. Hippen, technician, records of the CCHD/SO, set a 1 inch by 30 inch aluminum tube with aluminum cap above the recovered post point, 0.05 foot below the bituminous surface, 2.5 feet west of the new centerline and witnessed as follows:
10" Twin Birch N 87° W 197.50 feet 36" R.C.P. N 10° E 532.77 feet
10" B. Oak S 10° E 302.12 feet

The monument, recovered and established references for the position are shown on the face of this document.

Analysis of the recovered record data, field evidence and survey measurements, indicates that the monument found by CCHD/SO is the correct perpetuation of this corner.

County Coordinates (Cass County South)

Northing 217439.61
Easting 503083.32