

CERTIFICATE OF LOCATION OF GOVERNMENT CORNER

North Quarter Corner of Section 28
Township 145 N, Range 27 W, 4th P.M.
STATE OF MINNESOTA, COUNTY OF CASS



A000600940

OFFICE OF THE COUNTY RECORDER
CASS COUNTY, MINNESOTA
CERTIFIED, FILED, AND/OR
RECORDED ON

3/13/2014 11:37:43 AM

AS DOC #: A000600940

PAGES: 2

REC FEES: 0.00

KATHRYN M. NORBY
CASS COUNTY RECORDER

BY SR Dep

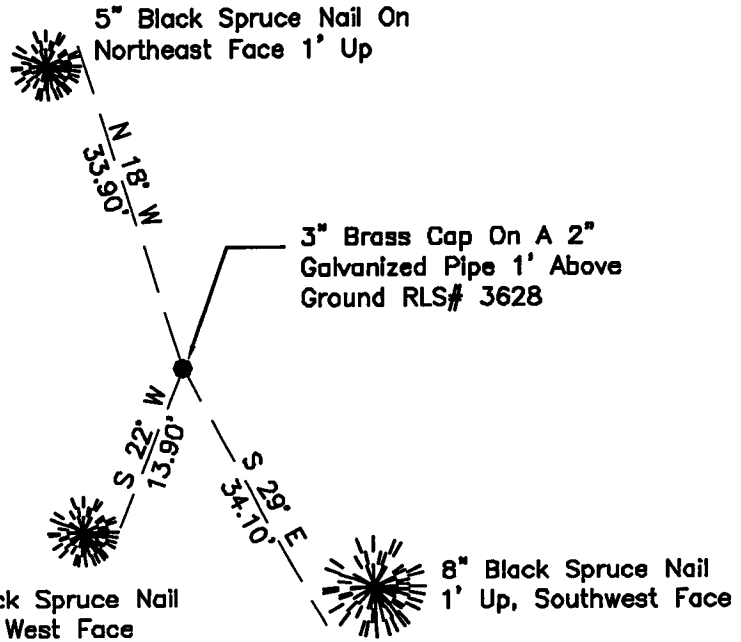
On 7/26/2011, found a(n): 3" Brass Cap On A 2" Galvanized Pipe 1' Above Ground RLS# 3628

- left monument as found
- lowered monument
- removed monument (explain)
- raised monument

On _____, set a(n): _____

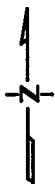
See "Statement of Evidence" for further details (on back)

(reserved for recording data)



21

28



"SKETCH OF REFERENCE TIES" (not to scale - bearings are magnetic)

Ties are measured to center of monument unless otherwise noted.

UNITS = Metric English

UTM COORDINATES, ZONE 15

Northing: 17208527.273
Easting: 1369302.229

NAD 83/1996 Adjustment.
Obtained by RTK GPS observations.

I hereby certify that this survey, plan, or report was prepared by me or under my direct supervision, and that I am a duly Licensed Land Surveyor under the laws of the State of Minnesota.

Ross Wamre
signature

6/26/13
date

Ross Wamre, Minnesota License No. 45334



STATEMENT OF EVIDENCE: Quarter Corner common to Sections 21 and 28 of Township 145 North, Range 27 West of the 5th Principal Meridian.

1873; This corner was originally established by P. H. Conger, his field notes indicate that this corner was marked by a post and witnessed by:

Tamarack 6" dia. South 38° West, 11 Links
Tamarack 11" dia. North 9° West, 20 Links

1924; M.J. Cummings, Forest Ranger, 874 forms, Minnesota National Forest, found a tamarack stump 2' high with no witnesses. Information on file with the USFS office in Cass Lake.

1937; J.A. Gjelhaug, CCC, LS# 1337, found a scribed post 30" above ground witnessed. USFS, Book 1 of Township 145 North, Range 27 West, page 9.

Tamarack 7" dia. South 40° West, 11 Links. Marked – ¼ S 21 B.T.

1958; Joseph Lausche and Peter J. Meyer, RLS # 3628, USFS, Book 1 of Township 145 North, Range 27 West, page 9, set a 2" dia., 5 ft. long, galvanized wrought iron pipe filled with concrete, capped with a 3" dia. bronze tablet stamped T145N R27W ¼ S21 S28 1958 RLS# 3628, and witnessed. An affidavit as to the location of the Government Corner is on file with Cass County Surveyor's Office.

Tamarack 8" dia. windfall and partly decayed South 38° West, 11 Links (1873 tie)
New BT:
Tamarack 7" dia. North 71 ½° West, 20.1 ft. marked T145N R27W S21 BT
Tamarack 5" dia. South 5° West, 28.5 ft. marked T145N R27W S28 BT
Tamarack 6" dia. North 71 ½° East, 8.4 ft. marked T145N R27W S21 BT

2011; A Kadrmas, Lee & Jackson survey crew, found a 3" brass cap on a 2" galvanized pipe stamped RLS# 3628 1' above ground. No existing bearing trees found. Witnesses were established as shown on the face of this certificate.

2012; Ross Wamre, RLS# 45334, after analysis of record and survey information accepts this monument as the correct perpetuation of the corner.

Contacts pertaining to this corner are as follows:

Cass County Recorder's Office
Cass County Engineers Office
Cass County Surveyors Office
Northern Engineering and Consulting Inc.
United States Forest Service
MNDOT – District Office 2
Bureau of Indians Affairs – Bemidji
Bureau of Land Management's (BLM) Northeastern States Field Office