

CERTIFICATE OF LOCATION OF GOVERNMENT CORNER

North Quarter Corner of Section 35
Township 145 N, Range 27 W, 5th P.M.
STATE OF MINNESOTA, COUNTY OF CASS



A000600936

OFFICE OF THE COUNTY RECORDER
CASS COUNTY, MINNESOTA
CERTIFIED, FILED, AND/OR
RECORDED ON

3/13/2014 11:37:39 AM

AS DOC #: A000600936

PAGES: 2

REC FEES: 0.00

KATHRYN M. NORBY
CASS COUNTY RECORDER

BY SR Dep

On _____, found a(n): _____
DATE

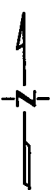
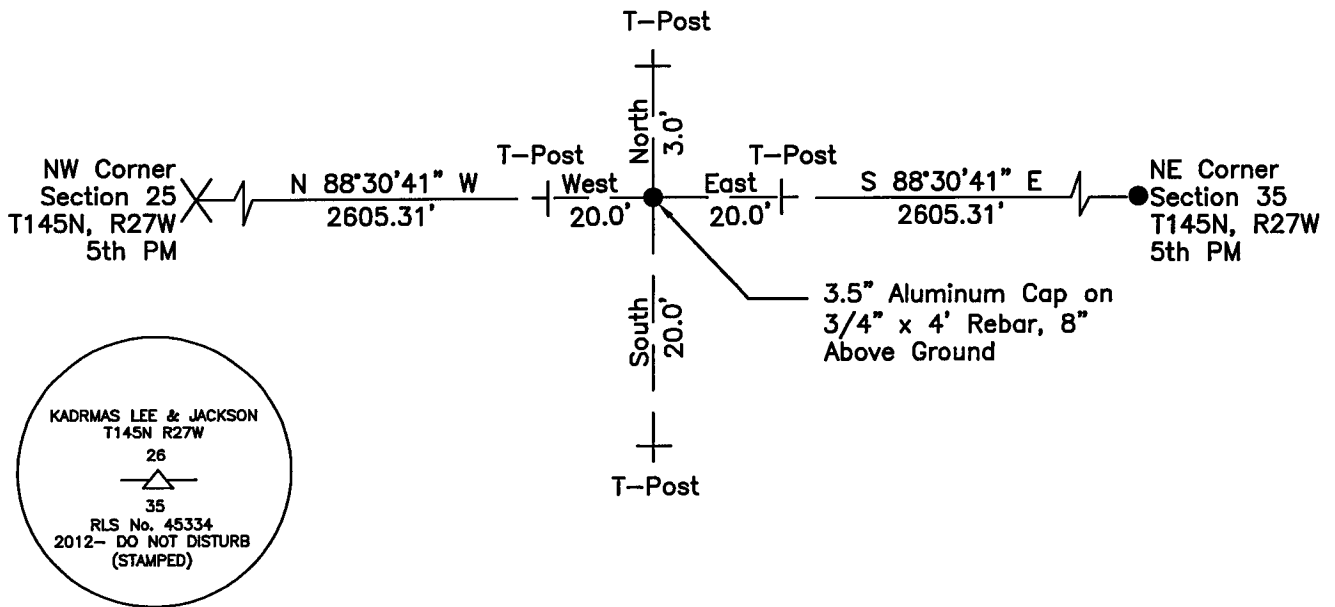
- left monument as found
- lowered monument
- removed monument (explain)
- raised monument

On 7/30/2012, set a(n): 3.5" Aluminum Cap on 3/4" x 4' Rebar, 8" Above Ground
DATE

See "Statement of Evidence" for further details (on back)

(reserved for recording data)

NOTE: Swamp Land, No Bearing Trees, Many Dead Trees



"SKETCH OF REFERENCE TIES" (not to scale - bearings are magnetic)

Ties are measured to center of monument unless otherwise noted.

UNITS = Metric English

UTM COORDINATES, ZONE 15

Northing: 17203013.55

Easting: 1376976.54

NAD 83/1996 Adjustment.

Obtained by RTK GPS observations.

I hereby certify that this survey, plan, or report was prepared by me or under my direct supervision, and that I am a duly Licensed Land Surveyor under the laws of the State of Minnesota.

Ross Wamre
signature

6/26/13
date

Ross Wamre, Minnesota License No. 45334



STATEMENT OF EVIDENCE: Quarter Corner common to Sections 26 and 35 of Township 145 North,
Range 27 West of the 5th Principal Meridian

1873; This corner was originally established by P.H. Conger for the GLO. His field notes indicate a post was set to mark this corner position which was witnessed by:

Tamarack 3" South 19° West, 21 links
Tamarack 3" North 80° East, 34 links

1929; USFS 874 form on file at the USFS office in Cass Lake, MN, shows that H.E. Johnson, Estimator, searched for this corner and found nothing.

2010; A Kadrmas, Lee & Jackson Survey crew completed a field search for this corner position and found an "approximate" corner tag set by the United States Forest Service in 1966 no record found for this tag.

2012; Ross Wamre, RLS #45334, after analysis of record and survey information set a 3 ½" Aluminum Cap on a ¾" x 4' Rebar, 8" above ground at a lost single proportionate measurement location between the reestablished Northeast Corner of Section 34 which was established over the ice in the original survey across Rice Lake and the recovered Northeast Corner of Section 35. Witnesses found and established as shown on the face of this certificate.

Contacts pertaining to this corner are as follows:

Cass County Recorder's Office
Cass County Engineers Office
Cass County Surveyors Office
Northern Engineering and Consulting Inc.
United States Forest Service
MnDOT – District Office 2
Bureau of Indians Affairs – Bemidji
Bureau of Land Management's (BLM) Northeastern States Field Office