

CERTIFICATE OF LOCATION OF GOVERNMENT CORNER

Northeast Corner of Section 36
Township 145 N, Range 27 W, 5th P.M.
STATE OF MINNESOTA, COUNTY OF CASS



A000600935

OFFICE OF THE COUNTY RECORDER
CASS COUNTY, MINNESOTA
CERTIFIED, FILED, AND/OR
RECORDED ON

3/13/2014 11:37:38 AM

AS DOC #: A000600935

PAGES: 2

REC FEES: 0.00

KATHRYN M. NORBY
CASS COUNTY RECORDER

BY SR Dep

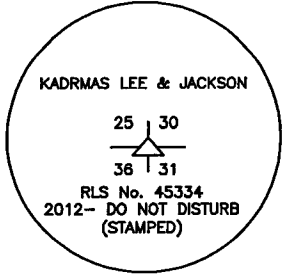
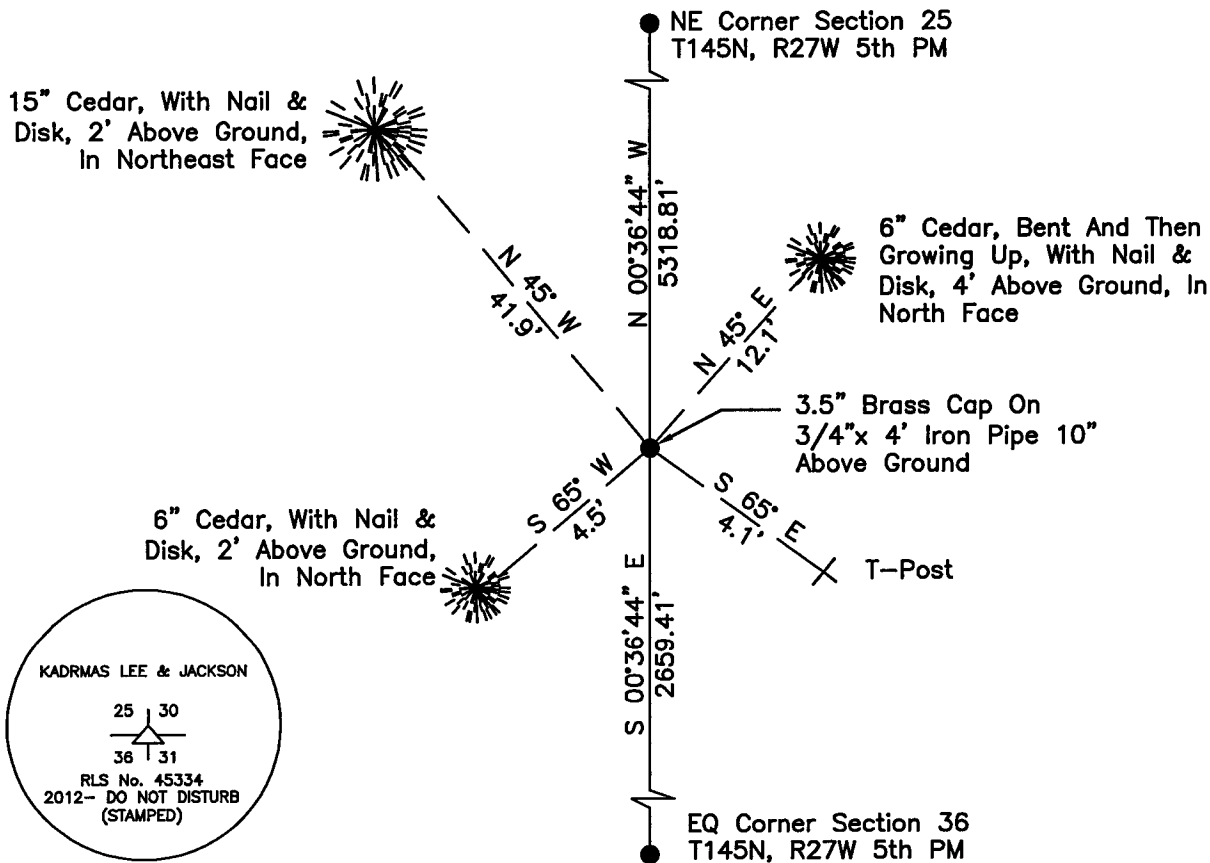
On _____, found a(n): _____
DATE

- left monument as found
- lowered monument
- removed monument (explain)
- raised monument

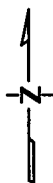
On 2/22/2012, set a(n): 3.5" Brass Cap On 3/4"x 4' Iron Pipe 10" Above Ground
DATE

See "Statement of Evidence" for further details (on back)

(reserved for recording data)



"SKETCH OF REFERENCE TIES" (not to scale - bearings are magnetic)



Ties are measured to center of monument unless otherwise noted.

UNITS = Metric English

UTM COORDINATES, ZONE 15

Northing: 17202855.650

Easting: 1384646.670

NAD 83/1996 Adjustment.

Obtained by RTK GPS observations.

I hereby certify that this survey, plan, or report was prepared by me or under my direct supervision, and that I am a duly Licensed Land Surveyor under the laws of the State of Minnesota.

Ross Wamre
signature

6/25/13
date

Ross Wamre, Minnesota License No. 45334





STATEMENT OF EVIDENCE: Corner common to Sections 25 and 36 of Township 145 North,
Range 27 West and to Sections 30 and 31 of Township 145 North, Range 26
West of the 5th Principal Meridian

1873; This corner was originally established by P.H. Conger for the GLO. His field notes indicate a post was set to mark this corner position which was witnessed by:

Tamarack 12" South 87 ½° East, 25 links
Cedar 8" North 86° West, 98 links
Tamarack 10" South 32 ½° West, 15 links
Cedar 5" North 36° East, 13 links

1960; USFS 874 form on file at the USFS office in Cass Lake, MN, shows that Stanley M. Morrison, Forestry Aid, found a metal location poster on the south face of a 6" tamarack tree with a blue line painted south of corner.

2010; A Kadrmas, Lee & Jackson Survey crew completed a field search for this corner position and found no evidence of this corner location.

2012; Ross Wamre, RLS #45334, after analysis of record and survey information set a 3 ½" Brass Cap on a ¾" x 4' Iron pipe 10" above ground at a lost single proportionate measurement location between the Northeast Corner of Section 25 and the East Quarter Corner of Section 36. Witnesses found and established as shown on the face of this certificate.

Contacts pertaining to this corner are as follows:

Cass County Recorder's Office
Cass County Engineers Office
Cass County Surveyors Office
Northern Engineering and Consulting Inc.
United States Forest Service
MnDOT – District Office 2
Bureau of Indians Affairs – Bemidji
Bureau of Land Management's (BLM) Northeastern States Field Office