

# CERTIFICATE OF LOCATION OF GOVERNMENT CORNER

Northeast Corner of Section 29  
Township 145 N, Range 27 W, 5th P.M.  
STATE OF MINNESOTA, COUNTY OF CASS



A000600927

OFFICE OF THE COUNTY RECORDER  
CASS COUNTY, MINNESOTA  
CERTIFIED, FILED, AND/OR  
RECORDED ON

3/13/2014 11:37:30 AM

AS DOC #: A000600927

PAGES: 3

REC FEES: 0.00

KATHRYN M. NORBY  
CASS COUNTY RECORDER

BY SR Dep

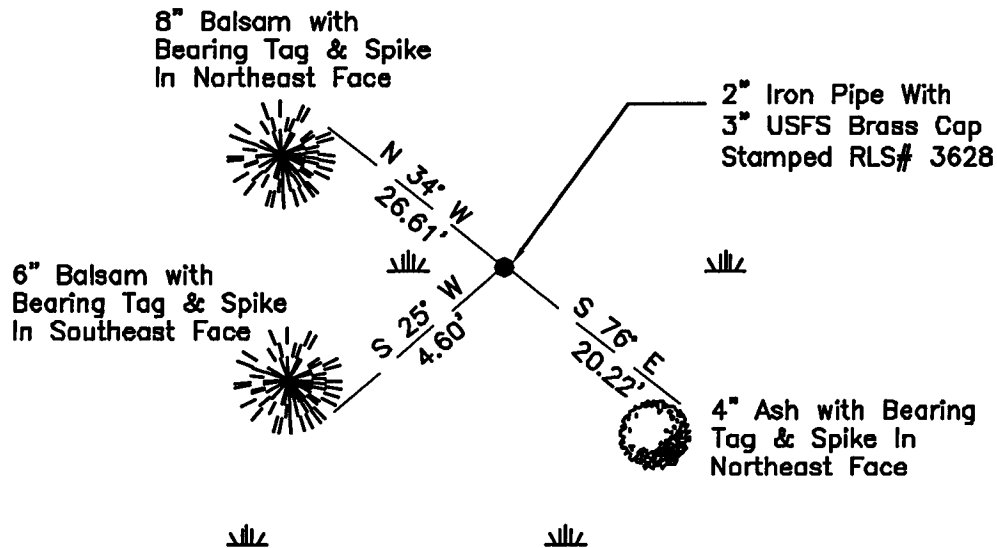
On 05/06/2010, found a(n): 2" Iron Pipe With 3" USFS Brass  
Cap Stamped RLS# 3628

- left monument as found
- lowered monument
- removed monument (explain)
- raised monument

On \_\_\_\_\_, set a(n): \_\_\_\_\_

See "Statement of Evidence" for further details (on back)

(reserved for recording data)



20	21
29	28

### "SKETCH OF REFERENCE TIES" (not to scale - bearings are magnetic)

Ties are measured to center of monument unless otherwise noted.

UNITS =  Metric  English

UTM COORDINATES, ZONE 15

Northing: 17208638.420

Easting: 1364052.539

NAD 83/1996 HARN Adjustment.

I hereby certify that this survey, plan, or report was prepared by me or under my direct supervision, and that I am a duly Licensed Land Surveyor under the laws of the State of Minnesota.

Ross Wamre  
signature

6/26/13  
date

Ross Wamre, Minnesota License No. 45334



**STATEMENT OF EVIDENCE:** Corner common to Sections 20, 21, 28 and 29 of Township 145 North,  
Range 27 West of the 5<sup>th</sup> Principal Meridian

**1873;** This corner was originally established by P.H. Conger for the GLO. His field notes indicate a 12" Spruce was set to mark this corner position which was witnessed by:

- Cedar 6" North 66° East, 38 links
- Spruce 4" South 77° West, 26 links
- Cedar 8" South 20° East, 40 links
- Tamarack 4" North 32° West, 18 links

**1929;** H.E. Johnson, USFS, 874 forms, found a squared stake in good condition 24 inches above the ground. Information on file with the USFS office in Cass Lake.

- Balsam 10" South 50° West, 27 links
- Aspen 11" North 5° East, 8 links

**1937;** J.A. Gjelhaug, Jr., LS# 1337,CCC, USFS Book 1 of Township 145 North, Range 27 West, page 32, found a Cedar Post 50" above ground and witnessed.

- 1873 Spruce 7" South 77° West, 26 links (1873 tie)
- Balsam 7" North 55° West, 31 links
- Cedar 6" North 52° East, 27 links

**1958;** R.H. McDonald, Peter J. Meyer, RLS# 3628 found Gjelhaug's bearing trees. Set a 2" inside diameter, 5' long, galvanized wrought iron pipe filled with concrete and capped with a stamped 3" diameter bronze tablet witnessed. An affidavit as to the location of the Government Corner is on file with Cass County Surveyor's Office.

- Spruce 4" South 77° West, 26 links (1873 Tie) Now mostly decayed
- Balsam 8" North 52° West, 20.5' (1937 Tie)
- Cedar 10" North 52° East, 27 links (1937 Tie)
- White Birch 8" North 27° West, 25.4'
- White Spruce 10" South 33° West, 29.0'
- Balsam 10" South 21 ½° East, 30.1'
- Cedar 9" South 86° East, 34.3'

**2010;** A Kadrmas, Lee & Jackson survey crew, found a 2" Iron Pipe with a 3" USFS Brass Cap stamped RLS# 3628 found no existing bearing trees. The monument was found lying down, reset monument in old hole and witnessed. Witnesses were established as shown on the face of this certificate.

**2012;** Ross Wamre, RLS #45334, after analysis of record and survey information accepts this monument as the correct perpetuation of the corner.

Contacts pertaining to this corner are as follows:

Cass County Recorder's Office



Cass County Engineers Office  
Cass County Surveyors Office  
Northern Engineering and Consulting Inc.  
United States Forest Service  
MnDOT – District Office 2  
Bureau of Indians Affairs – Bemidji  
Bureau of Land Management's (BLM) Northeastern States Field Office