

CERTIFICATE OF LOCATION OF GOVERNMENT CORNER

E1/4 Corner of Section 3, Township 140 N, Range 26 W, 5th p.m., State of Minnesota, County of Cass

At the corner location shown on the sketch:

On 14 AUG. 2013 found a 1 3/8" OD PIPE, UP 1.8'
Date

X left monument as found lowered monument removed monument (explain)

On _____ placed a _____
Date

SKETCH OF REFERENCE TIES

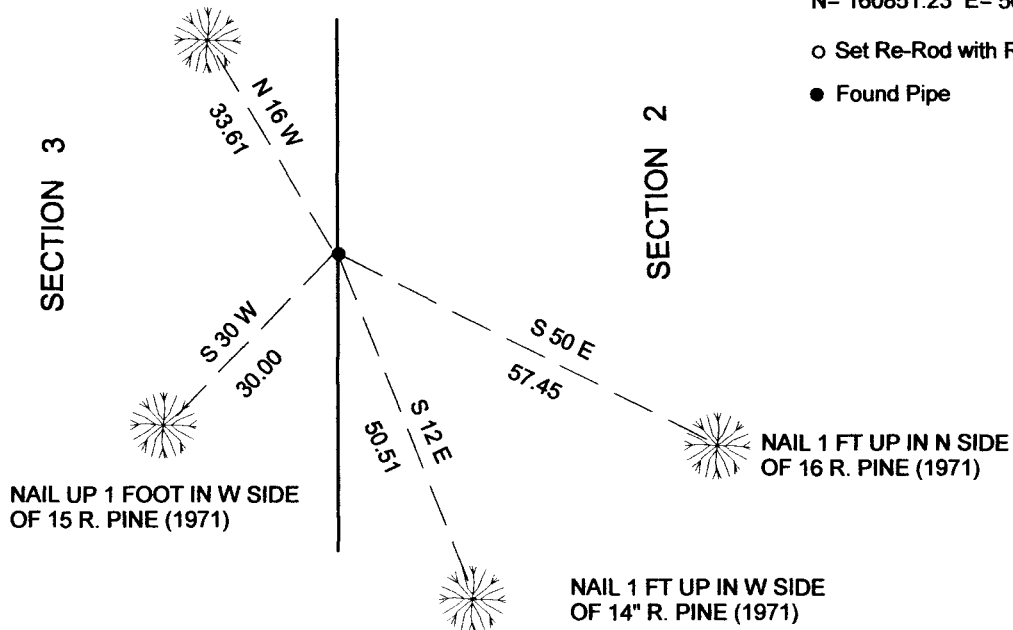
NAIL 1 FT UP IN W SIDE
OF 12" R. OAK

Tie Distances are measured to the spikes.

Cass County Coordinate System (South Zone)
N= 160851.23 E= 568130.11

○ Set Re-Rod with RLS cap No. 17774

● Found Pipe



SECTION 3

SECTION 2

NOT TO SCALE

Statement of evidence relative to this corner location is on back of page.

I hereby certify that this document and the data contained herein was prepared by me or under my direct supervision.

Marvin R. Kohout 2/28/2014
Marvin R. Kohout Date

MN License No, 17774

Land surveyor

OFFICE OF COUNTY RECORDER



A000600796

**OFFICE OF THE COUNTY RECORDER
CASS COUNTY, MINNESOTA
CERTIFIED, FILED, AND/OR
RECORDED ON**

3/6/2014 11:51:24 AM

AS DOC #: A000600796

PAGES: 2

REC FEES: 0.00

**KATHRYN M. NORBY
CASS COUNTY RECORDER**

BY SR Dep



INDEX NO. C.0-17.0

STATEMENT OF EVIDENCE

THE EAST QUARTER CORNER OF SECTION 3, TOWNSHIP 140 N., RANGE 26 W., 5TH P.M.

1871 ALLEN AND PUTNAM, DEPUTY GOVERNMENT SURVEYORS, SET A WOODEN POST TO MARK THE LOCATION OF THIS CORNER. REFERENCES: 10" ASH N35W 17.82 FT 10" MAPLE N58E 22.44 FT RECORDS ON FILE AT THE MN HISTORICAL SOCIETY, ST. PAUL, MINNESOTA AND COPIES AT THE CASS COUNTY HWY DEPT/ SURVEYOR'S OFFICE (CCHD/SO)

1949 H. CURO, LS 3417, CASS CO. SURVEYOR, STATES "AT THE POINT FOR THE ¼ CORNER BETWEEN SECTIONS 2 AND 3, I DRIVE A SPIKE FOR THE CORNER WITH A STAKE TO MARK THE PLACE AND MARK BEARINGS AS FOLLOWS:" 5" POPLAR N52-15E 5.95 FT 15" PINE SNAG N35-38W 20.25 FT SURVEY RECORD 632, BK D, PG 371 CCHD/SO

CIRCA 1970 WORKSHEET F1-2-337 INDICATES THE SUBJECT CORNER LIES N0-04-35W 2618.37 FT FROM THE SE CORNER OF SEC. 3. CCHD/SO

1971 DON COULTER, LS 5852, FOUND A RR SPIKE FROM OLD CURO TIE AND REPLACED IT WITH A 1" PIPE. REFERENCES (FACE TIES): 16" N. PINE S50E 56.85 FT 12" N. PINE S11-35E 49.95 FT 14" N. PINE S29-50W 29.1 FT 10" R. OAK N16W 33.55 FT 11" POPLAR SNAG (1949) N52-15E 5.9 FT CASS CO. LAND CORNER RECORD CCHD/SO

2010 B. HIPPEN, TECHNICIAN, FOUND A 1 3/8" OD IRON PIPE, UP 1.8 FEET, IN A SWALE, NE OF A N. PINE GROVE REFERENCES (DUPLEX NAIL): 16" N. PINE (1971) S50E 57.45 FT 14" N. PINE (1971) S12E 50.51 FT 15" N. PINE (1971) S30W 30.00 FT 12" R. OAK (1971) N16W 33.61 FT CCHD/SO

2013 MARVIN KOHOUT, LS 17774, KOHOUT LAND SURVEYING, FOUND THE IRON PIPE AND REFERENCES NOTED BY HIPPEN IN 2010 AND ACCEPTED THE PIPE AS MARKING THE LOCATION OF THIS CORNER.