

CERTIFICATE OF LOCATION OF GOVERNMENT CORNER

N1/4 Corner of Section 18, Township 139N, Range 25W, 5th p.m., State of Minnesota, County of Cass

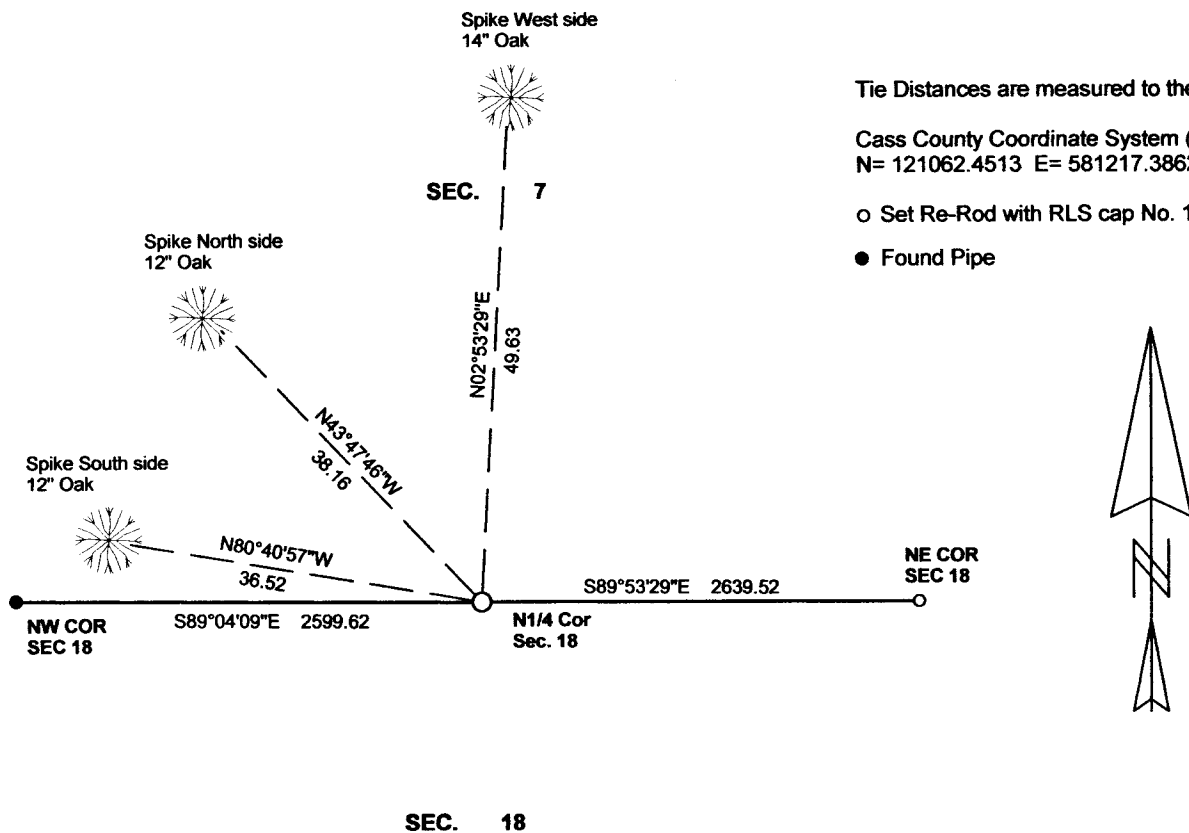
At the corner location shown on the sketch:

On _____ found a _____
Date _____

_____ left monument as found _____ lowered monument _____ removed monument (explain)

On 10/18/2012 placed a 3/8" RE-ROD WITH RLS CAP NO. 17774
Date _____

SKETCH OF REFERENCE TIES



Tie Distances are measured to the spikes.

Cass County Coordinate System (North Zone)
N= 121062.4513 E= 581217.3862

○ Set Re-Rod with RLS cap No. 17774

● Found Pipe



NOT TO SCALE

Statement of evidence relative to this corner location is on back of page.

I hereby certify that this document and the data contained herein was prepared by me or under my direct supervision.

Marvin R. Kohout 28 FEB 2014
Marvin R. Kohout Date

License No. 17774

Land surveyor

OFFICE OF COUNTY RECORDER



A000600794

**OFFICE OF THE COUNTY RECORDER
CASS COUNTY, MINNESOTA
CERTIFIED, FILED, AND/OR
RECORDED ON**

3/6/2014 11:51:22 AM

AS DOC #: **A000600794**

PAGES: **2**

REC FEES: **0.00**

**KATHRYN M. NORBY
CASS COUNTY RECORDER**

BY SR Dep





INDEX NO. J.0 - 3.0

STATEMENT OF EVIDENCE

NORTH QUARTER CORNER SECTION 18, TOWNSHIP 139N, RANGE 25W, 5TH P.M.

1863 DEPUTY SURVEYORS G.A. JOHNSON AND ALONZO THORNTON IN THE ORIGINAL GOVERNMENT SURVEY SET A POST AND MARKED BT'S. REFERENCES ARE:

10" W. PINE N 2 W 38 LINKS 6" W. PINE S 25 W 19 LINKS

2012 MARVIN KOHOUT, LS NO. 17774, AND DOUG STILLE, TECHNICIAN, OF KOHOUT LAND SURVEYING, SEARCHED FOR EVIDENCE OF THIS CORNER, NOTHING FOUND. A REROD WITH RLS CAP NO. 17774 WAS SET AT DISTANCES IN HARMONY WITH HISTORICAL FEATURES FROM ORIGINAL GOVERNMENT NOTES.