

CERTIFICATE OF LOCATION OF GOVERNMENT CORNER

NE Corner of Section 19, Township 139N, Range 25W, 5th p.m., State of Minnesota, County of Cass

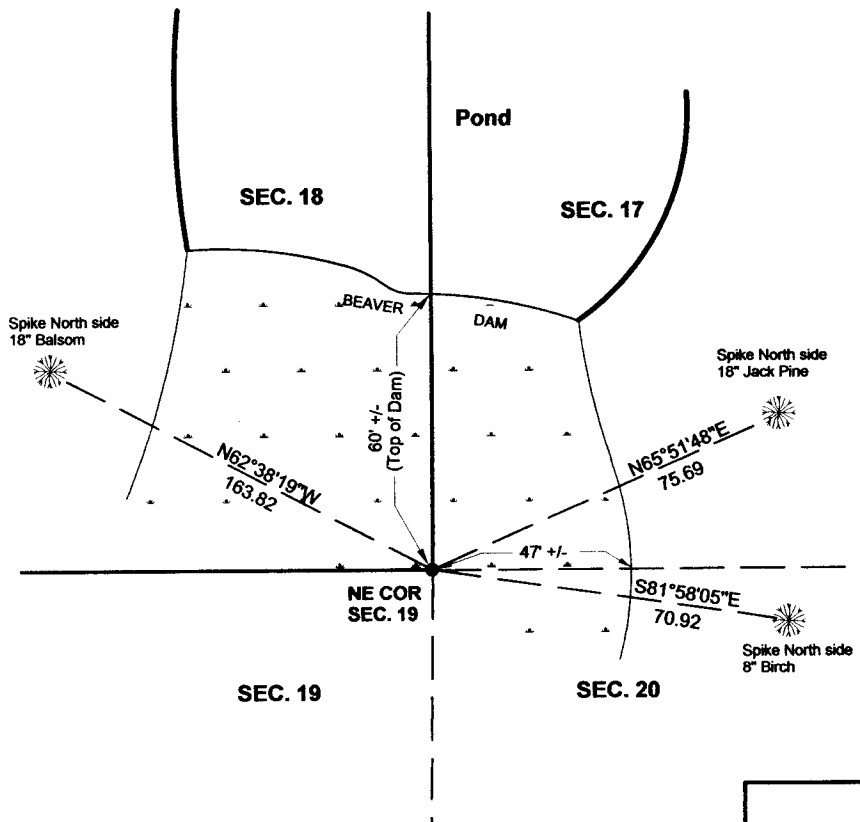
At the corner location shown on the sketch:

On 10/16/2012 found a PIPE WITH RLS CAP NO. 10940
Date

left monument as found lowered monument removed monument (explain)

On _____ placed a _____
Date

SKETCH OF REFERENCE TIES



Tie Distances are measured to the spikes.

Cass County Coordinate System (North Zone)
N= 115858.8084 E= 583929.3424

o Set Re-Rod with RLS cap No. 17774

● Found Pipe

NOT TO SCALE

Statement of evidence relative to this corner location is on back of page.

I hereby certify that this document and the data contained herein was prepared by me or under my direct supervision.

Marvin R. Kohout 28 FEB 2014
Marvin R. Kohout Date

License No. 17774

Land surveyor

OFFICE OF COUNTY RECORDER



A000600792

OFFICE OF THE COUNTY RECORDER
CASS COUNTY, MINNESOTA
CERTIFIED, FILED, AND/OR
RECORDED ON

3/6/2014 11:51:20 AM

AS DOC #: A000600792

PAGES: 2

REC FEES: 0.00

KATHRYN M. NORBY
CASS COUNTY RECORDER

BY SR _____ Dep

**INDEX NO. N.0 – 5.0****STATEMENT OF EVIDENCE****NORTHEAST CORNER SECTION 19, TOWNSHIP 139N, RANGE 25W, 5TH P.M.**

- 1863 DEPUTY SURVEYORS G.A. JOHNSON AND ALONZO THORNTON IN THE ORIGINAL GOVERNMENT SURVEY SET A POST AND MARKED B.T.'S. REFERENCES ARE:
6" TAMARACK N 80 E 77 LINKS 10" TAMARACK S 56 E 104 LINKS
10" TAMARACK N 32 W 276 LINKS
- 1937 CCC, WASHBURN LAKE, SET APPROXIMATE CORNER, BOOK NO. 1 PAGE 63. ORIGINAL CORNER IS 200' NORTH, BOOK NO. 3 PAGE 7, TAG ON FENCE FOR SECTION CORNER, FENCE RUNS NORTH AND WEST AND IS 80 CHAINS WEST OF A 2" POPLAR STAKE.
- 1986 WALLACE F. BUCKLER, LS NO. 09672, MAP SHOWS IN PLACE.
- 2009 KEN METCALF E-MAILS COUNTY SURVEYOR BOB KOVANEN THAT HE FOUND A 1/2" X 18" WITH RLS CAP 1094? 50 FEET, MORE OR LESS, SOUTH OF A BEAVER DAM IN A MARSHY AREA. MONUMENT IS 40 FEET WEST OF HIGH GROUND
- 2012 MARVIN KOHOUT, LS NO. 17774, AND DOUG STILLE, TECHNICIAN, OF KOHOUT LAND SURVEYING, FOUND A PIPE SET BY RONALD C. JACKSON, LS NO. 10940 BELOW A BEAVER DAM, IN A MARSHY AREA AND 40 FEET WEST OF HIGH GROUND. ACCEPTED THE MONUMENT AS MARKING THE LOCATION OF THE SECTION CORNER. IT SHOULD BE NOTED I DID NOT HAVE ACCESS TO JACKSON'S RECORDS.