

CERTIFICATE OF LOCATION OF GOVERNMENT CORNER

East 1/4 Corner of Section 24, Township 139 N., Range 25 W., 5th P.M.
State of Minnesota, County of Cass

At the corner location shown on the sketch:

On _____ found _____

left monument as found lowered monument removed monument (explain)

On Oct. 31, 2013 placed 1/2 in OD iron pipe stamped with 17768

Page 1 of 2 A000600784

T. 139 R. 25

T. 50 R. 27



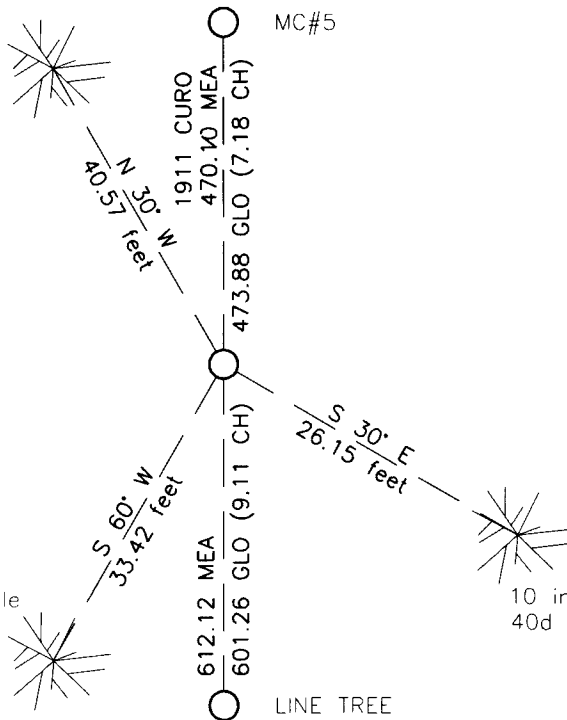
10 inch Basswood
40d Spike

MC#5

12 inch Maple
40d Spike

10 inch Red Oak
40d Spike

LINE TREE



Statement of evidence relative to this corner location is on the back of this page.

I hereby certify that this survey, plan or report was prepared by me or under my direct supervision and that I am a duly Licensed Land Surveyor under the laws of the State of Minnesota.

Daniel W. Skinner, Land Surveyor
Date 2-16-14 MN License No. 40827



A000600784

**OFFICE OF THE COUNTY RECORDER
CASS COUNTY, MINNESOTA
CERTIFIED, FILED, AND/OR
RECORDED ON**

3/6/2014 11:51:12 AM

AS DOC #: A000600784

PAGES: 2

REC FEES: 0.00

**KATHRYN M. NORBY
CASS COUNTY RECORDER**

BY SR _____ Dep



East Quarter corner Section 24, Township 139 North, Range 25 West, 5th Principal Meridian. Index No. P-25

Statement of Evidence

Nov. 16, 1863 - G.A. Johnson, GLO Deputy Surveyor, set a post for the original corner and referenced it as follows: 5" Sugar Maple S 25 degrees W 14 links (9.24 feet); 10" Aspen N 85 degrees W 27 links (17.82 feet).

The above record is on file with the Secretary of State, St. Paul, Minnesota, copies are on file in the Cass County Surveyor's Office (CCSO).

CCSO Files

Apr. 7, 1911, J. Curo, LS 1428, Curo Field Book 74, page 6, & Book A, pages 349-352, on file in the CCSO, states "We find the Maple plainly marked and the stump of the Aspen from which we set a square stake for the true $\frac{1}{4}$ corner."

1937 - CCC personnel, Washburn Lake notes, Book 2, page 17, on file in the Department of Natural Resources Office (DNR), states set approx. stake 3" Aspen 40 CH. from N.

1941 - CCC personnel, Washburn Lake notes, Emily Game Refuge Book, page 17, on file in the DNR Office, states at 2640' from South set 4" Maple.

Karvacko Engineering

Oct. 31, 2013 - Karvacko Engineering Survey Crew searched an area 474 feet south of MC #5 and 601 feet north of the line tree found north of the southeast corner of Section 24 and found no evidence of the called for posts or bearing trees. Set a $\frac{1}{2}$ inch outside diameter iron pipe stamped with 17768 at a distance 470.10 feet south of the location of MC #5 as stated on the sketch in Book A, page 352 & using the line from northeast corner of Section 12 passing through the location of MC #5. The following witnesses were marked: 10" Red Oak S 30 degrees E 26.15 feet; 12" Maple S 60 degrees W 33.42 feet; 10" Basswood N 30 degrees W 40.57 feet.

Analysis of the recovered record data, field evidence and survey measurements, indicated that the monument set using Obliterated Methods is the accepted location of this corner.