

CERTIFICATE OF LOCATION OF GOVERNMENT CORNER

Northeast corner of Section 12, Township 139 N., Range 25 W., 5th P.M.
 State of Minnesota, County of Cass

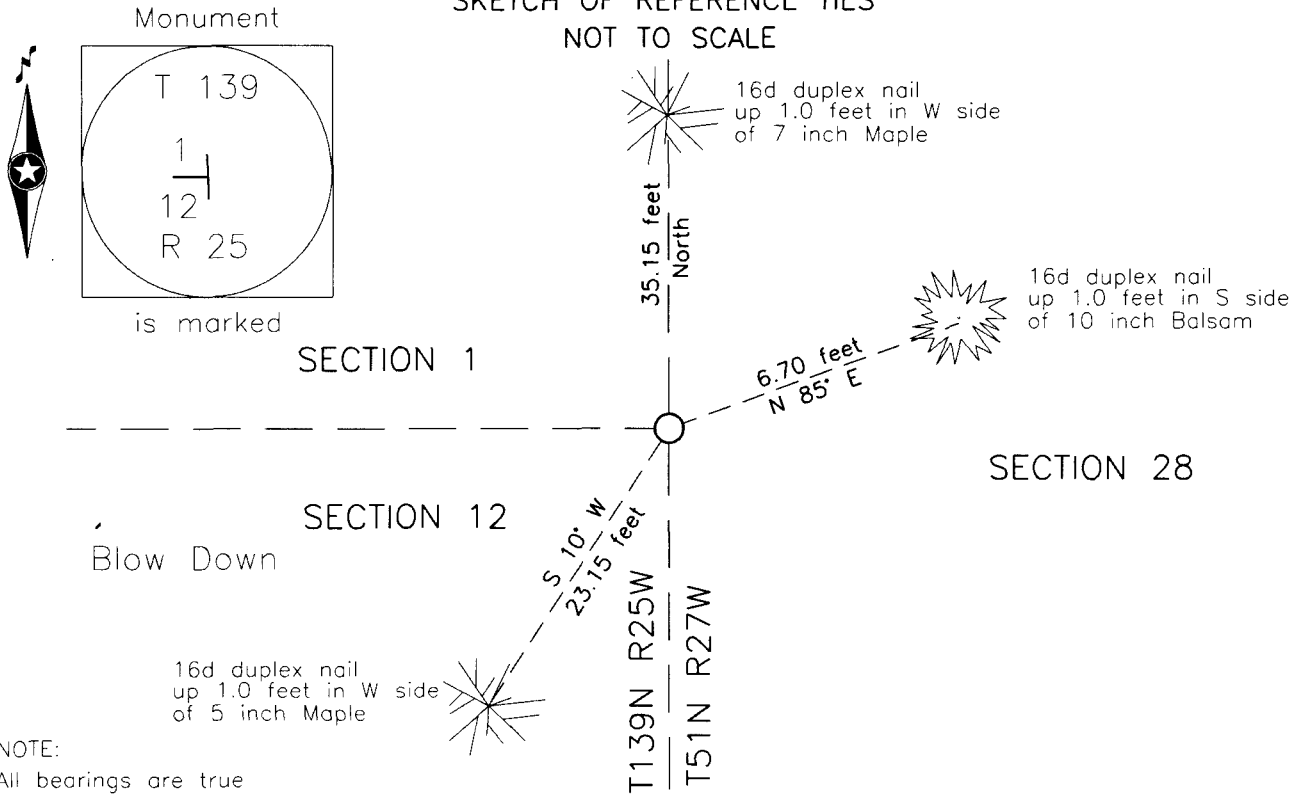
At the corner location shown on the sketch:

On Oct.28,2013 found a 1.5 inch OD iron pipe with screw on cap (CCC),
up 2.5 feet.

left monument as found lowered monument removed monument (explain)

On _____ placed _____

SKETCH OF REFERENCE TIES NOT TO SCALE



Statement of evidence relative to this corner location is on the back of this page.

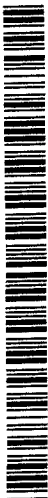
I hereby certify that this survey, plan or report was prepared by me or under my direct supervision and that I am a duly Licensed Land Surveyor under the laws of the State of Minnesota.

Daniel W. Skinner, Land Surveyor
 Date 2-16-14 MN License No. 40827



A000600778
OFFICE OF THE COUNTY RECORDER
CASS COUNTY, MINNESOTA
CERTIFIED, FILED, AND/OR
RECORDED ON
3/6/2014 11:51:06 AM
AS DOC #: A000600778
PAGES: 2
REC FEES: 0.00
KATHRYN M. NORBY
CASS COUNTY RECORDER
 BY SR Dep

Page 1 of 2 A000600778



Northeast corner, Section 12, Township 139 North, Range 25 West on the 3rd Guide Meridian. Index No. E-25

Statement of Evidence

Oct.10, 1863 - G.A.Johnson, GLO Deputy Surveyor, set a post for the original corner and referenced it as follows: 20" W. Pine S 35 degrees W 31 links (20.46 feet); 14" Aspen N 10 degrees W 16 links (10.56 feet).

Oct.17, 1863 - G.A.Johnson & A.S.Thornton, GLO Deputy Surveyors, closed onto the subject corner.

The above records are on file with the Secretary of State, St. Paul, Minnesota, copies are on file in the Cass County Surveyor's Office (CCSO).

CCSO Files

Apr 13, 1911 J.W.Curo, LS 1428, Cass County Surveyor, Survey Record 162, Book A, page 351, and Curo film, Book 74, page 15, states "we find the stump of the S.W. pine plainly marked from which we set the true corner."

1937 - Civilian Conservation Corps (CCC) personnel, Washburn Lake notes, Book 1, page 10, on file at the Minnesota Department of Natural Resources (DNR), states set approx. cor. 80 ch. from S.

1937 - CCC personnel, Washburn Lake notes, Book 3, page 46, on file at the DNR, states Fnd old 3" Aspen stake stump of W. Pine B.T. S 31 W 22.2' - set 4" stake 5' high with yellow tag.

1937 - CCC personnel, Washburn Lake notes, Book 7, on file at the DNR, states Fnd W. Pine stump S 30 1/2 W 20.4' with blaze set 1 1/2" x 54" I.P. 2 1/2' in ground w/ 2 1/4" cap, and the following references: W. Pine stump S 30 1/2 degrees W 20.4 feet 6.4" Balsam S 36 degrees W 40 feet.

1937 - CCC personnel, Washburn Lake notes, Book 20, on file at the DNR, states Rd is 1340' South of corner. Fnd I.P.

Mar.17, 2004 - B.Hippen, CCSO technician, records of the CCSO, found a 1 1/2 inch outside diameter iron pipe, with a screw on cap (CCC), up 2.5 feet, and add the following witnesses: 7" Maple North 35.15 feet 10" Balsam; N 85 degrees E 6.70 feet; 5" Maple S 10 degrees W 23.15 feet.

Karvakko Engineering

Oct 28, 2013 - Karvakko Engineering Survey Crew found a 1 1/2 inch outside diameter iron pipe as identified by the CCSO technician and verified the witness as stated.

The found monument was accepted as the NE corner Section 12.