

CERTIFICATE OF LOCATION OF GOVERNMENT CORNER

NE Corner of Section 24, Township 139N, Range 26W, 5th p.m., State of Minnesota, County of Cass

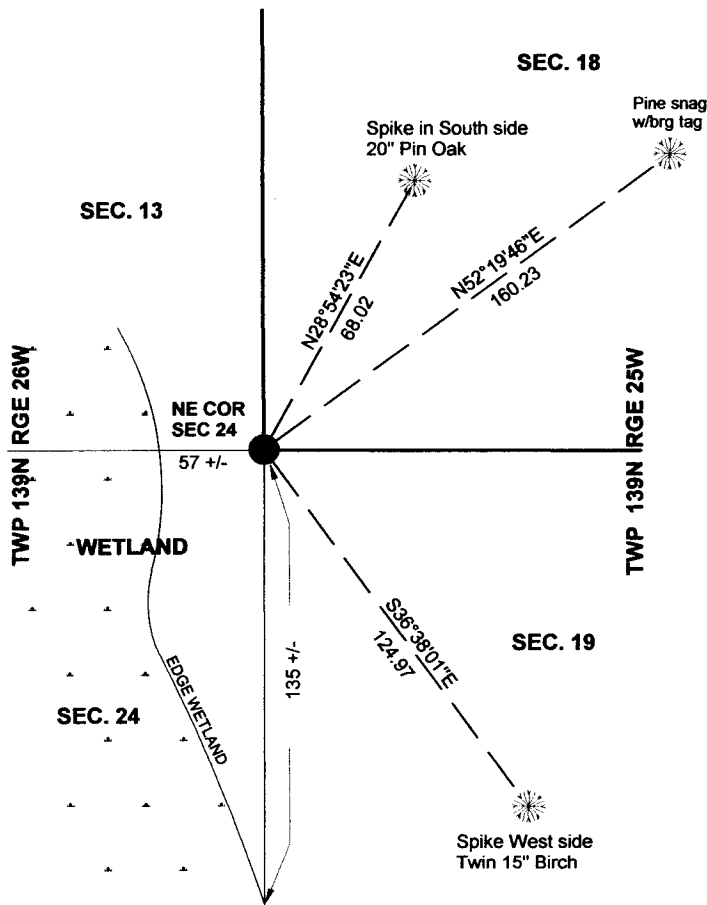
At the corner location shown on the sketch:

On 10/16/2012 found a 2 1/2" PIPE WITH CAP
Date

left monument as found lowered monument removed monument (explain)

On _____ placed a _____
Date

SKETCH OF REFERENCE TIES



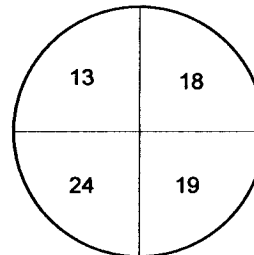
Tie Distances are measured to the spikes.

Cass County Coordinate System (North Zone)
N= 115842.4455 E= 578621.4041

○ Set Re-Rod with RLS cap No. 17774

● Found Pipe

DETAIL OF CAP



NOT TO SCALE

Statement of evidence relative to this corner location is on back of page.

I hereby certify that this document and the data contained herein was prepared by me or under my direct supervision.

Marvin R. Kohout 25 FEB 2013
Marvin R. Kohout Date

Registration No. 17774

Land surveyor

OFFICE OF COUNTY RECORDER



A000600389

**OFFICE OF THE COUNTY RECORDER
CASS COUNTY, MINNESOTA
CERTIFIED, FILED, AND/OR
RECORDED ON**

2/13/2014 1:04:07 PM

AS DOC #: A000600389

PAGES: 2

REC FEES: 0.00

**KATHRYN M. NORBY
CASS COUNTY RECORDER**

BY SR _____ Dep

Page 1 of 2 A000600389



INDEX NO. N.0 – 25.0

STATEMENT OF EVIDENCE

NORTHEAST CORNER SECTION 24, TOWNSHIP 139N, RANGE 26W, 5TH P.M.

- 1863 DEPUTY SURVEYORS G.A. JOHNSON AND ALONZO THORNTON IN THE ORIGINAL GOVERNMENT SURVEY SET A POST AND MARKED B.T.'S. REFERENCES ARE:
8" PINE N 72 E 223 LINKS 8" PINE S 12 E 304 LINKS
6" PINE S 87 W 145 LINKS 7" PINE N 46-30 W 95 LINKS

- 1912 DEPUTY COUNTY SURVEYOR M.A.KEMP, FOUND OLD B.T. STUMPS (8" PINE N 72 E 223 LKS, 8" PINE S 12 E 304 LKS, 6" PINE S 87 W 145 LKS, 7" PINE N 46-30 W 95 LKS) HE SET A 4" X 4" X 30" HUB, COUNTY BOOK "B" PAGE 182. SURVEY RECORD NO. 280

- 1920 BEN CLARK, LS NO. 231, FOUND 1912 B.T.'S AND REPLACED THE 4" X 24" POST WITH A 2 1/2 "X 36" CAPPED I.P. ADDITIONAL B.T.: 15" W. PINE N 45 E 160.40' COUNTY BOOK "C" PAGE 541 SURVEY RECORD NO. 483, CURO BOOK 162, PAGE 40

- 2012 MARVIN KOHOUT, LS NO. 17774, AND DOUG STILLE, TECHNICIAN, OF KOHOUT LAND SURVEYING FOUND A 2 1/2" IRON PIPE WITH A SCRIBED CAP. ACCEPTED THE MONUMENT AS MARKING THE CORNER LOCATION.