

CERTIFICATE OF LOCATION OF GOVERNMENT CORNER

North Closing Quarter Corner of Section 4
Township 144 N , Range 26 W , 5th P.M.
STATE OF MINNESOTA, COUNTY OF CASS



A000600232

OFFICE OF THE COUNTY RECORDER
CASS COUNTY, MINNESOTA
CERTIFIED, FILED, AND/OR
RECORDED ON

2/6/2014 11:47:34 AM

AS DOC #: A000600232

PAGES: 3

REC FEES: 0.00

KATHRYN M. NORBY
CASS COUNTY RECORDER

BY SR Dep

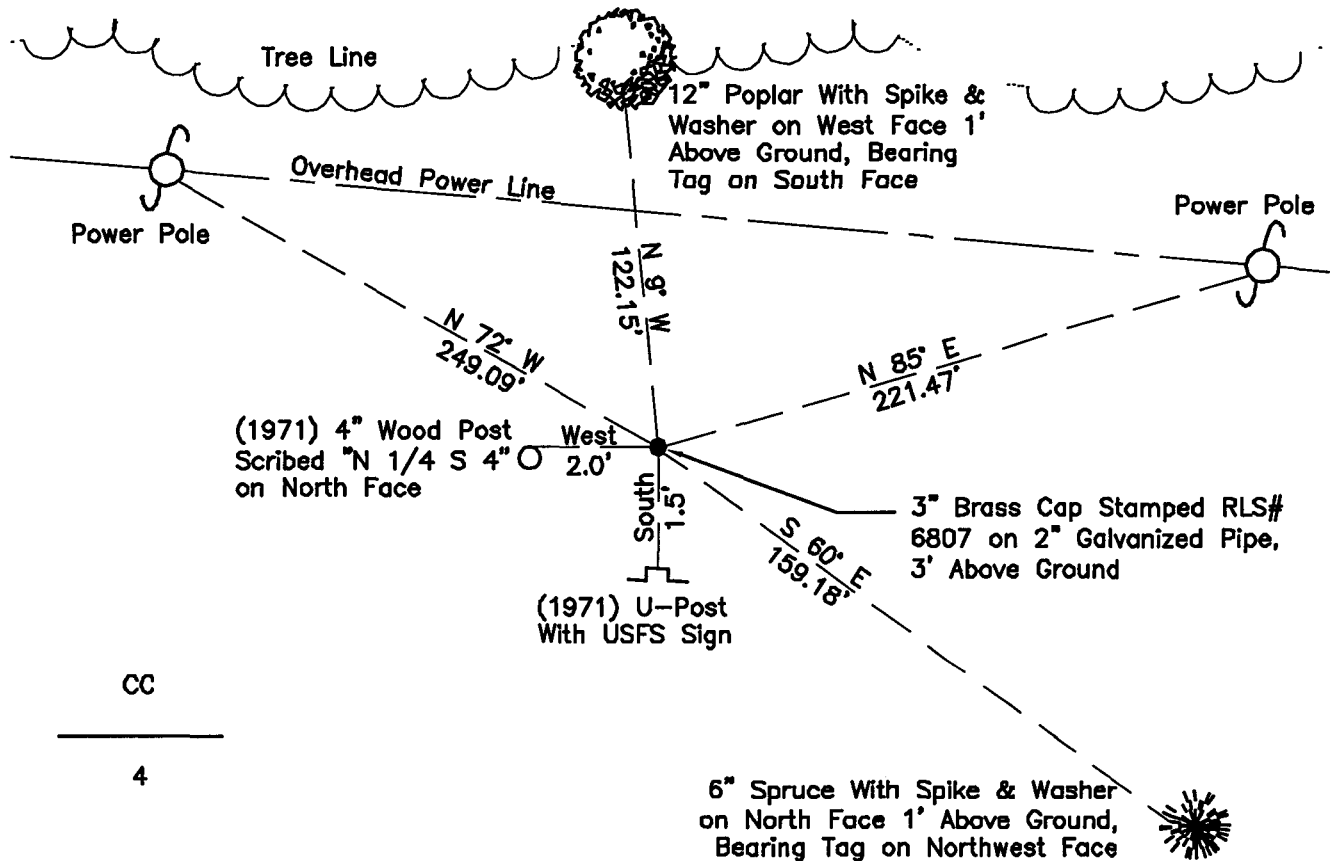
On 10/30/2012, found a(n): 3" Brass Cap Stamped
RLS# 6807 on 2" Galvanized Pipe, 3' Above Ground

left monument as found lowered monument
 removed monument (explain) raised monument

On _____, set a(n): _____

See "Statement of Evidence" for further details (on back)

(reserved for recording data)



CC

4

"SKETCH OF REFERENCE TIES" (not to scale - bearings are magnetic)

Ties are measured to center of monument unless otherwise noted.

UNITS = Metric English

UTM COORDINATES, ZONE 15

Northing: 17197328.420

Easting: 1398254.096

NAD 83/1996 HARN Adjustment.

I hereby certify that this survey, plan, or report was prepared by me or under my direct supervision, and that I am a duly Licensed Land Surveyor under the laws of the State of Minnesota.

Ross Wamre
signature

6/10/13
date

Ross Wamre, Minnesota License No. 45334

Page 1 of 3 A000600232



STATEMENT OF EVIDENCE: Closing Corner to Section 4 of Township 144 North, Range 26 West of the 5th Principal Meridian

1935; USFS 874 form, on file at the USFS office in Cass Lake, MN, indicates that A. Friesen found a B.T. and set a FSLP at this corner location:

Tamarack Snag 8" South 27° East, 0.15 chains
Set FSLP on the NE face of a Balsam 5" South 42° West, 0.13 chains

1953; USFS 874 form, on file at the USFS office in Cass Lake, MN, and USFS notes Book 2 of Township 144 North, Range 26 West, page 30, state that R.W. Fassett, USFS, found no evidence of the old corner. He established this corner by proportional measurement. He set a 4" treated post scribed "N¼C S4." Corner is on flat at east edge of small swamp and is ± 1.3 chains south of an oil pipeline witnessed by:

Set FSLP Balsam 6" North 42° West, 0.30 chains

1971; USFS notes Book 2 of Township 144 North, Range 26 West, page 30 state that Curtis Krause, while working for William Okerman RLS #6807, found a 2"x2"x36" hub beside a 4" treated post. Corner is 60' south of centerline of oldest pipeline constructed in the 1950s and at the East edge of a small brush swamp. Approximately 400' west of the East entrance of the Mud Lake Road. To perpetuate this corner Krause set a 2" dia., 5' long galvanized steel pipe filled with concrete and capped with a 3" dia. stamped brass tablet and witnessed by:

White Spruce 13" South 71° East, 47.1' scribed "CC¼ S4 B.T."
White Spruce 13" South 41° East, 47.6' scribed "CC¼ S4 B.T."
Black Spruce 9" South 18° West, 70.6' scribed "CC¼ S4 B.T."
8' Steel Sign Post South 1.6' with FS 54-4 sign
4" Treated post set West 1.7'

1983; USFS notes Book 2 of Township 144 North, Range 26 West, page 30, show that B. Ausk and G. Kosenko, USFS, found a 2 ½" outside dia. galvanized iron pipe with a 3" dia. stamped brass cap 3' above ground witnessed by:

White Spruce 13" South 71° East, 47.1' scribed "CC¼ S4 B.T." (1971 Tie)
White Spruce 13" South 41° East, 47.6' scribed "CC¼ S4 B.T." (1971 Tie)
Black Spruce 9" South 18° West, 70.6' scribed "CC¼ S4 B.T." (1971 Tie)
8' Steel Sign Post South 1.6' with FS 54-4 sign (1971 Tie)

2010; A Kadrmas, Lee & Jackson survey crew found a 3" Brass cap stamped RLS #6807 on a 2" galvanized pipe 3' above ground, witnesses found and established as shown on the face of this certificate.

2012; Ross Wamre, PLS #45334, after analysis of record and survey information accepts this monument as the correct perpetuation of this corner location.



Contacts pertaining to this corner are as follows:

Cass County Recorder's Office

Cass County Engineers Office

Cass County Surveyors Office

Northern Engineering and Consulting Inc.

United States Forest Service

MnDOT – District Office 2

Bureau of Indians Affairs – Bemidji

Bureau of Land Management's (BLM) Northeastern States Field Office