

# CERTIFICATE OF LOCATION OF GOVERNMENT CORNER

East Quarter Corner of Section 24  
Township 139 N, Range 28 W, 5th P.M.  
STATE OF MINNESOTA, COUNTY OF Cass



A000600127

OFFICE OF THE COUNTY RECORDER  
CASS COUNTY, MINNESOTA  
CERTIFIED, FILED, AND/OR  
RECORDED ON

2/3/2014 11:10:22 AM

AS DOC #: A000600127

PAGES: 2

REC FEES: 0.00

KATHRYN M. NORBY  
CASS COUNTY RECORDER

BY SR Dep

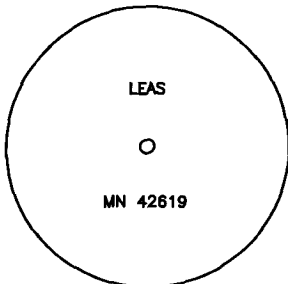
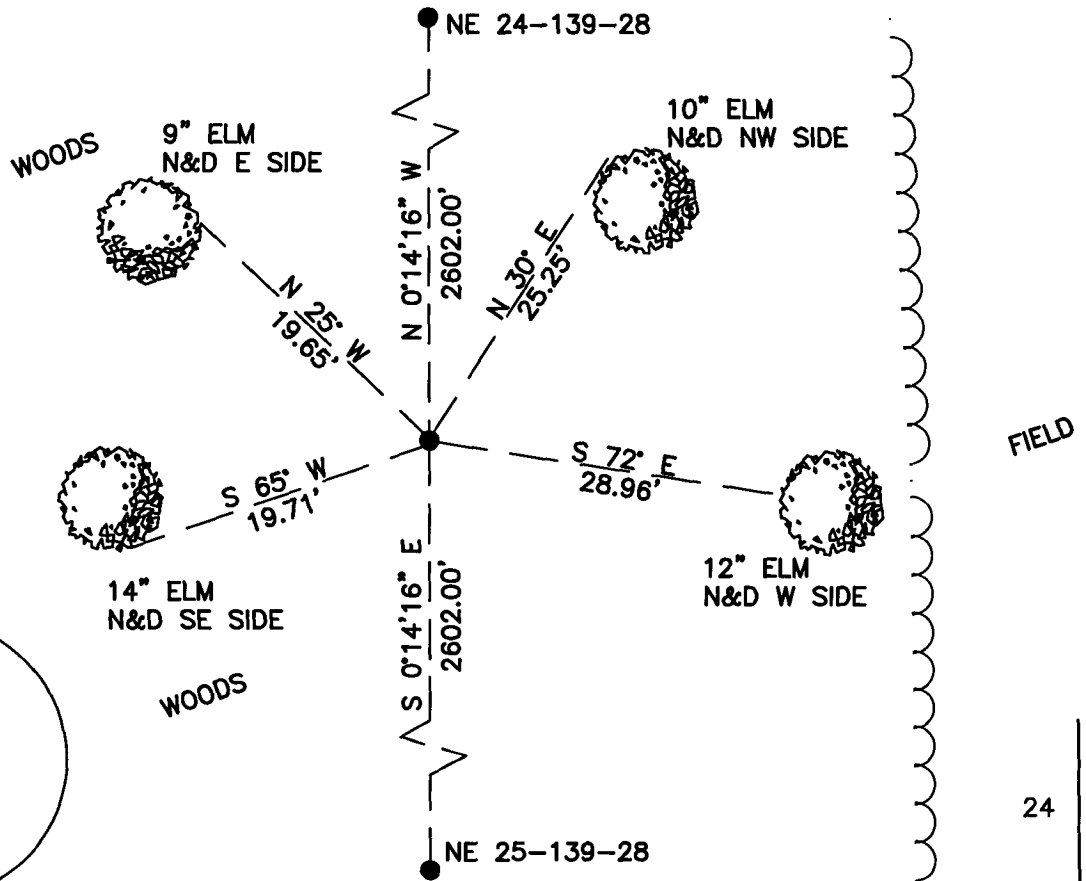
On \_\_\_\_\_, found a(n): \_\_\_\_\_  
DATE

- left monument as found
- lowered monument
- removed monument (explain)
- raised monument

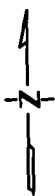
On 12/2/2013, set a(n): 5/8"X24" Rebar With Plastic Cap  
DATE  
Stamped "Leas MN 42619" up 0.5'.

See "Statement of Evidence" for further details (on back)

(reserved for recording data)



### "SKETCH OF REFERENCE TIES" (not to scale - bearings are magnetic)



Ties are measured to center of monument unless otherwise noted.

UNITS =  Metric  English

### CASS COUNTY SOUTH COORDINATES

Northing: 349667.778  
Easting: 578224.468

NAD 83/2007 Adjustment.  
Obtained by RTK GPS observations.

I hereby certify that this survey, plan, or report was prepared by me or under my direct supervision, and that I am a duly Licensed Land Surveyor under the laws of the State of Minnesota.

signature  
Jarrett M. Leas, Minnesota License No. 42619

1-28-14  
date

Page 1 of 2 A000600127



Statement of Evidence

**East Quarter corner of Section 24, Township 139 North, Range 28 West, 5th Principal Meridian.**

- 1863 The US General Land Office, in notes of running the east line of Township 139 North, Range 28 West, set a post for the original corner and referenced it as follows:  
7" Aspen      S 80° E      13 links      8" Aspen      N 75° W      20 links  
Said records are on file with the Minnesota Historical Society, St. Paul, Minnesota, copies are filed with the Cass County Surveyor's Office (CCSO).
- 1919 B. Clark, LS 231, Survey Record Number 434, Book C, page 307, on file in the CCSO, indicates an Aspen post 3'X3" square was set. Page 312 indicates an iron post was set, stating, "Then set ¼ S. bet. 19-24 on range line an iron post 4 ft. long 2 in diam. marked the same ¼ S. and made following witness tree."  
Pine stump      S 4°15' W      30 feet
- 1922 B. Clark, LS 231, County Resurvey, on file in the Cass County Recorder's Office, document number 69795, indicates Iron Monument.
- 1937 CCC Washburn Lake field book no. 1, page 6, on file at the DNR office in Brainerd show CCC personnel found a 3" square stake 1.02 chains west of random line.
- 2013 KLJ field crews searched the area and found nothing. This corner was set lost by single proportion between the Northeast corner of Section 24 and the Northeast corner of Section 25. A 5/8" x 24" rebar with plastic cap stamped "Leas MN 42619" was set to mark the corner position and is witnessed with the ties shown on the front of this certificate.
- 2013 November 2013, Survey crew from North West Survey & Engineering found the 1919 B. Clark 2 ½ inch capped pipe at the Northeast Corner of Section 24, T 139 N, R 28 W.
- 2013 November 2013, KLJ used the position of the Clark pipe at the Northeast Corner of Section 24, T 139 N, R 28 W, to compute a lost position for this corner. KLJ field crews then performed another search of this area for evidence of the corner and found nothing. Jarrett Leas, RLS #42619, after analysis of record and survey information accepts this monument as the correct perpetuation of the corner