

CERTIFICATE OF LOCATION OF GOVERNMENT CORNER

Northeast Corner of Section 28
Township 145 N, Range 29 W, 5th P.M.
STATE OF MINNESOTA, COUNTY OF CASS



A000600045

OFFICE OF THE COUNTY RECORDER
CASS COUNTY, MINNESOTA
CERTIFIED, FILED, AND/OR
RECORDED ON

1/30/2014 11:01:22 AM

AS DOC #: A000600045

PAGES: 2

REC FEES: 0.00

KATHRYN M. NORBY
CASS COUNTY RECORDER
BY SR Dep

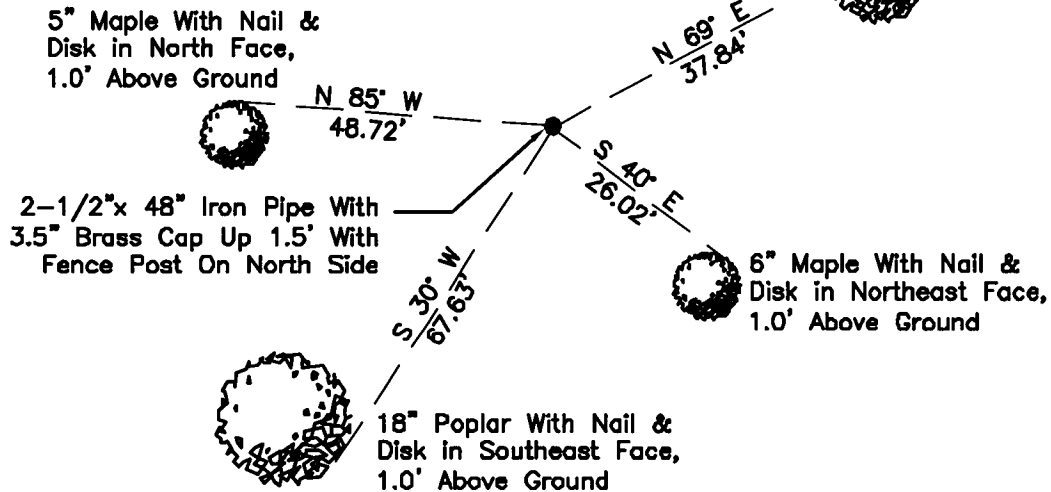
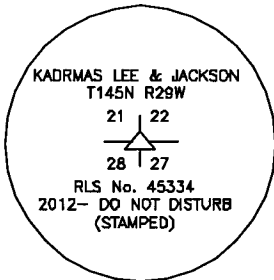
On _____, found a(n): _____
DATE

- left monument as found
- lowered monument
- removed monument (explain)
- raised monument

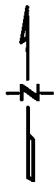
On 7/11/2012, set a(n): 2-1/2"x 48" Iron Pipe With 3.5" Brass Cap Up 1.5' With Fence Post On North Side
DATE

See "Statement of Evidence" for further details (on back)

(reserved for recording data)



"SKETCH OF REFERENCE TIES" (not to scale - bearings are magnetic)



Ties are measured to center of monument unless otherwise noted.

UNITS = Metric English

UTM COORDINATES, ZONE 15

Northing: 17209102.573

Easting: 1305132.998

NAD 83/1996 Adjustment.

Obtained by RTK GPS observations.

I hereby certify that this survey, plan, or report was prepared by me or under my direct supervision, and that I am a duly Licensed Land Surveyor under the laws of the State of Minnesota.

Ross Wamre
signature

6/24/13
date

Ross Wamre, Minnesota License No. 45334

Page 1 of 2 A000600045



STATEMENT OF EVIDENCE: Corner common to Sections 21, 22, 27 and 28 of Township 145 North, Range 29 West of the 5th Principal Meridian.

1874; This corner was originally established by P. H. Conger, his field notes indicate that this corner was marked by a post and witnessed by:

White Pine 12" South 45^o East, 45 Links
Yellow Pine 20" South 55^o West, 123 Links
White Pine 20" North 64^o West, 134 Links

1916; Minneapolis-St. Paul & Sault Ste. Marie Railway Co. Moose Lake to Plummer Right of Way and Track Map shows an angle of 67^o 06' and distance of 1294' at station 498+54 to tie this corner to the centerline of the railroad. Information on file with the Minnesota Department of Transportation.

2010; A Kadrmas, Lee & Jackson survey crew found no evidence of this corner location

2012; Ross Wamre, RLS #45334, set a 2 ½" x 48" Iron Pipe with a 3.5" Brass cap 1.5' above ground with a fence post on the North side. This location was calculated from the calculated alignment, tangents and curves of Minneapolis-St. Paul & Sault Ste. Marie Railway Co. Moose Lake to Plummer Right of Way and Track Map.

Contacts pertaining to this corner are as follows:

Cass County Recorder's Office

Cass County Engineers Office

Cass County Surveyors Office

Northern Engineering and Consulting Inc.

United States Forest Service

MnDOT – District Office 2

Bureau of Indians Affairs – Bemidji

Bureau of Land Management's (BLM) Northeastern States Field Office