

CERTIFICATE OF LOCATION OF GOVERNMENT CORNER

East Quarter Corner of Section 21
Township 145 N, Range 29 W, 5th P.M.
STATE OF MINNESOTA, COUNTY OF CASS



A000600038

OFFICE OF THE COUNTY RECORDER
CASS COUNTY, MINNESOTA
CERTIFIED, FILED, AND/OR
RECORDED ON

1/30/2014 11:01:15 AM

AS DOC #: A000600038

PAGES: 2

REC FEES: 0.00

KATHRYN M. NORBY
CASS COUNTY RECORDER

BY SR Dep

On _____, found a(n): _____

- left monument as found
- lowered monument
- removed monument (explain)
- raised monument

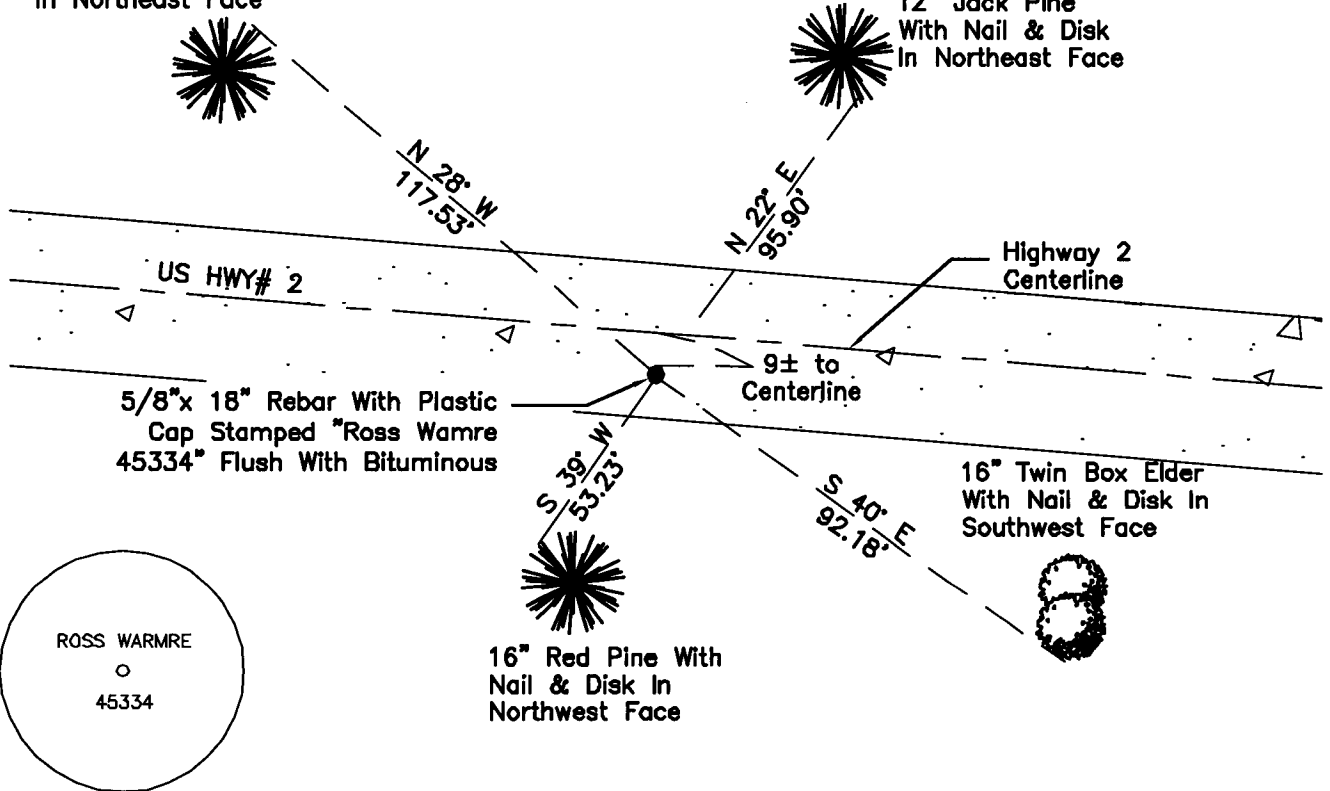
On 7/9/2012, set a(n): 5/8"x 18" Rebar With Plastic Cap
Stamped "Ross Wamre 45334" Flush With Bituminous

See "Statement of Evidence" for further details (on back)

(reserved for recording data)

12" Jack Pine
With Nail & Disk
In Northeast Face

12" Jack Pine
With Nail & Disk
In Northeast Face



ROSS WARMRE
○
45334

16" Red Pine With
Nail & Disk In
Northwest Face

16" Twin Box Elder
With Nail & Disk In
Southwest Face

"SKETCH OF REFERENCE TIES" (not to scale - bearings are magnetic)

Ties are measured to center of monument unless otherwise noted.

UNITS = Metric English

UTM COORDINATES, ZONE 15

Northing: 17211801.740

Easting: 1305322.050

NAD 83/1996 Adjustment.

Obtained by RTK GPS observations.

I hereby certify that this survey, plan, or report was prepared by me or under my direct supervision, and that I am a duly Licensed Land Surveyor under the laws of the State of Minnesota.

Ross Wamre
signature

6/21/13
date

Ross Wamre, Minnesota License No. 45334





STATEMENT OF EVIDENCE: Quarter Corner common to Sections 21 and 22 of Township 145 North,
Range 29 West of the 5th Principle Meridian

1874; This corner was originally established by P. H. Conger, his field notes indicate that this corner was marked by a post and witnessed by:

Aspen 4" North 35° West, 18 Links
Aspen 4" South 71° East, 23 Links

1898; Great Northern Railroad, Schley station plat, shows a station, angle and distance to this corner. Information is on file with the Minnesota Department of Transportation.

2010; A Kadrmas, Lee & Jackson survey crew found no evidence at this corner location.

2012; Ross Wamre, RLS# 45334, set a 5/8" x 18" Rebar with a plastic cap at a position according to angle and distance tie on the Great Northern Railway Schley station plat after alignment recovery of the existing Railroad. Witnesses found and established as shown on face of this certificate.

Contacts pertaining to this corner are as follows:

- Cass County Recorder's Office
- Cass County Engineers Office
- Cass County Surveyors Office
- Northern Engineering and Consulting Inc.
- United States Forest Service
- MnDOT – District Office 2
- Bureau of Indians Affairs – Bemidji
- Bureau of Land Management's (BLM) Northeastern States Field Office