

CERTIFICATE OF LOCATION OF GOVERNMENT CORNER

East Quarter Corner of Section 20
Township 145 N, Range 29 W, 5th P.M.
STATE OF MINNESOTA, COUNTY OF CASS



A000600037

OFFICE OF THE COUNTY RECORDER
CASS COUNTY, MINNESOTA
CERTIFIED, FILED, AND/OR
RECORDED ON

1/30/2014 11:01:14 AM

AS DOC #: A000600037

PAGES: 2

REC FEES: 0.00

KATHRYN M. NORBY
CASS COUNTY RECORDER

BY SR Dep

On _____, found a(n): _____

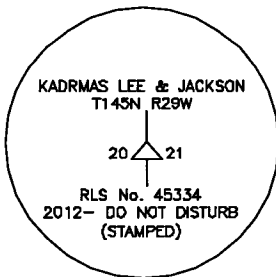
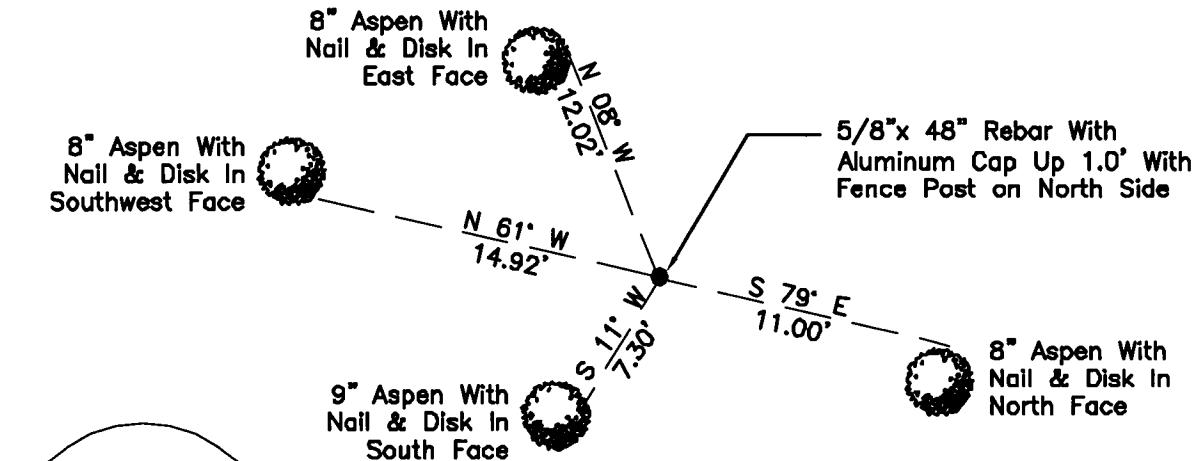
- left monument as found
- lowered monument
- removed monument (explain)
- raised monument

On 7/12/2012, set a(n): 5/8"x 48" Rebar With Aluminum Cap Up 1.0' With Fence Post on North Side

See "Statement of Evidence" for further details (on back)

(reserved for recording data)

Note: Woods Area



"SKETCH OF REFERENCE TIES"
(not to scale - bearings are magnetic)

Ties are measured to center of monument unless otherwise noted.

UNITS = Metric English

UTM COORDINATES, ZONE 15
 Northing: 17211752.380
 Easting: 1299923.750

NAD 83/1996 Adjustment.
Obtained by RTK GPS observations.

I hereby certify that this survey, plan, or report was prepared by me or under my direct supervision, and that I am a duly Licensed Land Surveyor under the laws of the State of Minnesota.

Ross Wamre
signature

6/12/13
date

Ross Wamre, Minnesota License No. 45334



STATEMENT OF EVIDENCE: Quarter Corner common to Sections 20 and 21 of Township 145 North,
Range 29 West of the 5th Principal Meridian.

1874; This corner was originally established by P. H. Conger, his field notes indicate that this corner was marked by a post and witnessed by:

Aspen 2 ½" South 76° East, 14 Links

Aspen 2 ½" South 37° West, 16 Links

1946; State of Minnesota Department of Highways Right-of-Way Map Index file 32-86 shows a Marked Wood Post in place with an angle and distance tie to U.S. Highway No. 2. Information is on file with the Minnesota Department of Transportation.

2010; A Kadrmass, Lee & Jackson survey crew found no evidence of this corner location

2012; Ross Wamre, RLS #45334, after analysis of record and survey information set a 5/8" x 4' Rebar with 3.5" Aluminum Cap 1.0' above ground, at a calculated position from the field recovered alignment of U.S. Highway No. 2 using stationing, angle and distance according to State of Minnesota Department of Highways Right-of-Way Map Index file 32-86. Witnesses found and established as shown on face of this certificate.

Contacts pertaining to this corner are as follows:

Cass County Recorder's Office

Cass County Engineers Office

Cass County Surveyors Office

Northern Engineering and Consulting Inc.

United States Forest Service

MnDOT – District Office 2

Bureau of Indians Affairs – Bemidji

Bureau of Land Management's (BLM) Northeastern States Field Office