

CERTIFICATE OF LOCATION OF GOVERNMENT CORNER

North Quarter Corner of Section 24
Township 139 N, Range 28 W, 5th P.M.
STATE OF MINNESOTA, COUNTY OF Cass



A000599888

OFFICE OF THE COUNTY RECORDER
CASS COUNTY, MINNESOTA
CERTIFIED, FILED, AND/OR
RECORDED ON

1/24/2014 1:33:51 PM

AS DOC #: A000599888
PAGES: 2
REC FEES: 0.00

KATHRYN M. NORBY
CASS COUNTY RECORDER
BY SR Dep

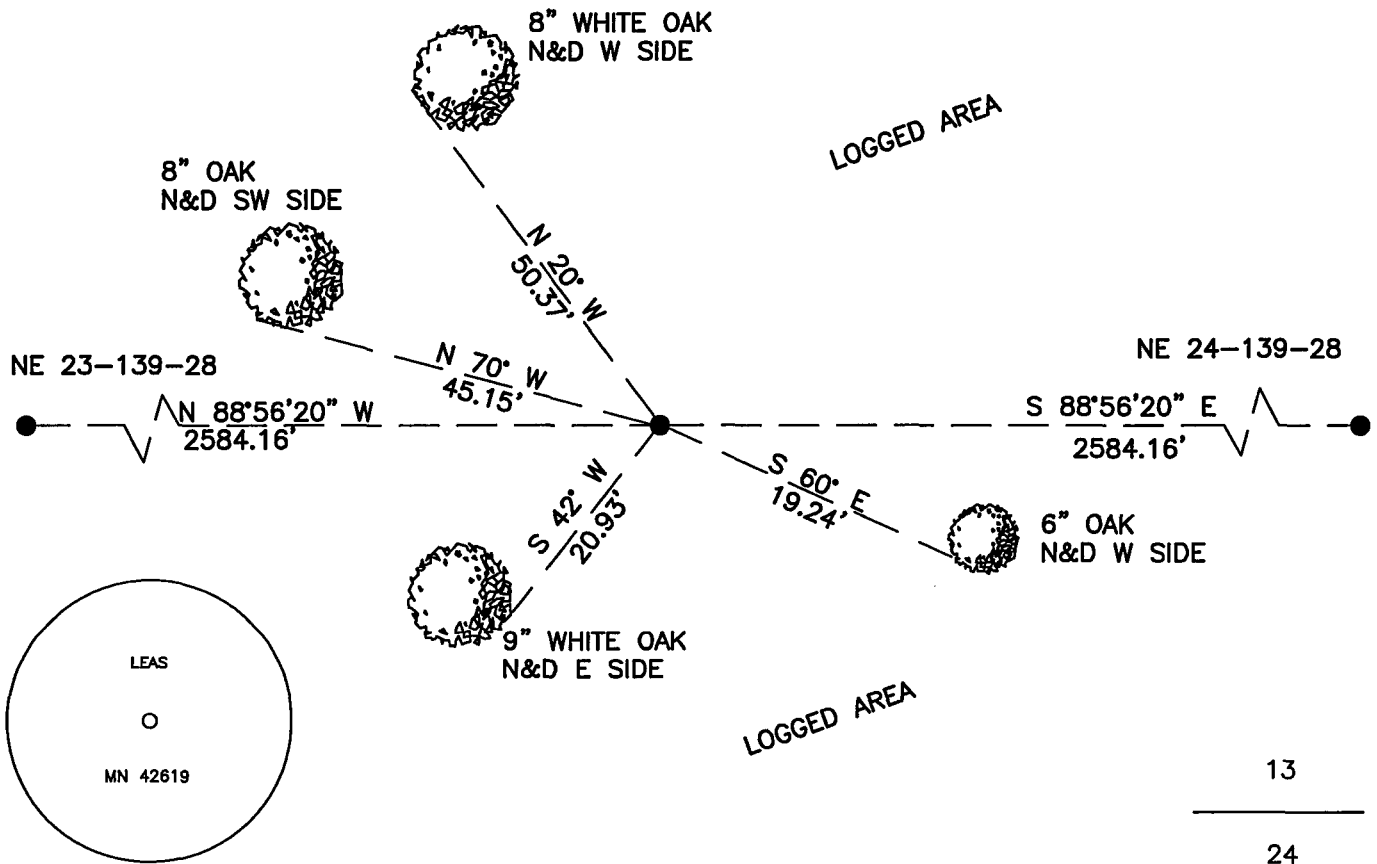
On _____, found a(n): _____
DATE

- left monument as found
- lowered monument
- removed monument (explain)
- raised monument

On 12/2/2013, set a(n): 5/8"X24" Rebar With Plastic Cap
DATE
Stamped "Leas MN 42619" up 0.5' Above Ground in Logged Area.

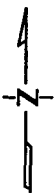
See "Statement of Evidence" for further details (on back)

(reserved for recording data)



"SKETCH OF REFERENCE TIES"

(not to scale - bearings are magnetic)



Ties are measured to center of monument unless otherwise noted.

UNITS = Metric English

CASS COUNTY SOUTH COORDINATES

Northing: 352317.618
Easting: 575629.956

NAD 83/2007 Adjustment.
Obtained by RTK GPS observations.

I hereby certify that this survey, plan, or report was prepared by me or under my direct supervision, and that I am a duly Licensed Land Surveyor under the laws of the State of Minnesota.

Jarrett M. Leas
signature
Jarrett M. Leas, Minnesota License No. 42619

1-14-14
date

Page 1 of 2 A000599888



Statement of Evidence

North Quarter corner of Section 24, Township 139 North, Range 28 West, 5th Principal Meridian.

- 1864 The US General Land Office, in notes of the subdivision of Township 139 North, Range 28 West, set a post for the original corner and referenced it as follows:
7" W. Maple N 8° E 12 links 5" Br. Oak S 10° W 26 links
Said records are on file with the Minnesota Historical Society, St. Paul, Minnesota, copies are filed with the Cass County Surveyor's Office (CCSO).
- 1919 B. Clark, LS 231, Survey Record Number 434, Book C, page 323, on file in the CCSO, indicates an iron pipe was set, stating, "went to the hub for the ¼ S. cor. Bet sec. 24-13 and set an iron pipe 4' long 2½" diam. drove the same in ground 2 ft."
- 1922 B. Clark, LS 231, County Resurvey, on file in the Cass County Recorder's Office, document number 69795, indicates Iron Monument.
- 1938 CCC Washburn Lake field book no.12, page 13, on file at the DNR office in Brainerd show CCC personnel did not recover the iron pipe, at 2640' from the east, an approximate corner was set.
- 2013 KLJ field crews searched the area and found nothing. This corner was set lost by single proportion between the Northeast corner of Section 23 and the Northeast corner of Section 24. A 5/8" x 24" rebar with plastic cap stamped "Leas MN 42619" was set to mark the corner position and is witnessed with the ties shown on the front of this certificate.
- 2013 November 2013, Survey crew from North West Survey & Engineering found the 1919 B. Clark 2 ½ inch capped pipe at the Northeast Corner of Section 24, T 139 N, R 28 W.
- 2013 November 2013, KLJ used the position of the Clark pipe at the Northeast Corner of Section 24, T 139 N, R 28 W, to compute a lost position for this corner. KLJ field crews then performed another search of this area for evidence of the corner and found nothing. Jarrett Leas, RLS #42619, after analysis of record and survey information accepts this monument as the correct perpetuation of the corner.