

CERTIFICATE OF LOCATION OF GOVERNMENT CORNER

Northeast Corner of Section 23
 Township 139 N, Range 28 W, 5th P.M.
 STATE OF MINNESOTA, COUNTY OF Cass



A000599887

OFFICE OF THE COUNTY RECORDER
 CASS COUNTY, MINNESOTA
 CERTIFIED, FILED, AND/OR
 RECORDED ON

1/24/2014 1:33:50 PM

AS DOC #: A000599887

PAGES: 2

REC FEES: 0.00

KATHRYN M. NORBY
 CASS COUNTY RECORDER

BY SR Dep

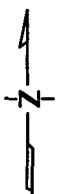
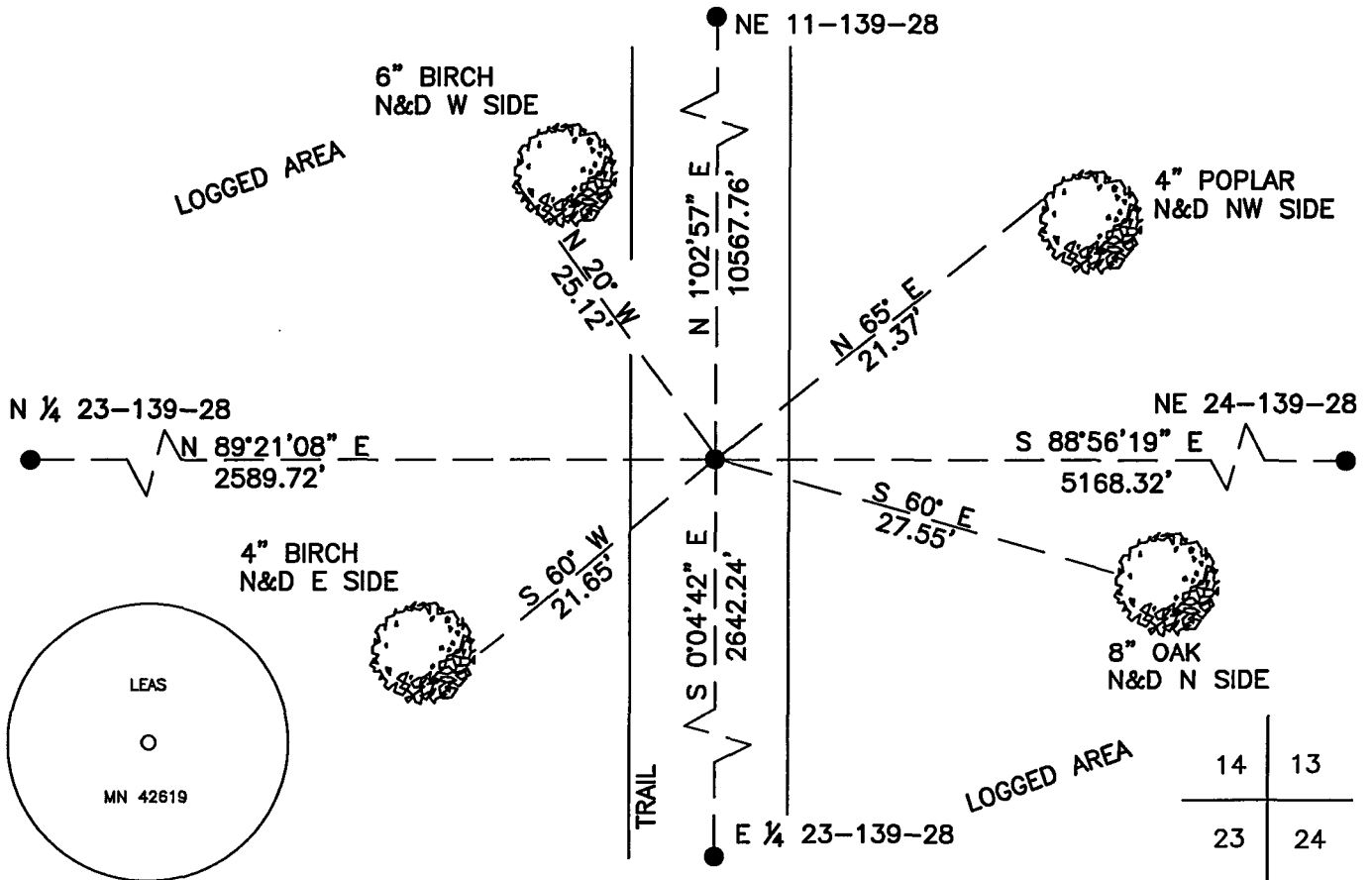
On _____, found a(n): _____
DATE

- left monument as found
- lowered monument
- removed monument (explain)
- raised monument

On 12/5/2013, set a(n): 5/8"X24" Rebar With Plastic Cap
 Stamped "Leas ^{DATE} MN 42619" Flush With Ground on \odot of North - South
 Trail.

See "Statement of Evidence" for further details (on back)

(reserved for recording data)



"SKETCH OF REFERENCE TIES"

(not to scale - bearings are magnetic)

Ties are measured to center of monument unless otherwise noted.

UNITS = Metric English

CASS COUNTY SOUTH COORDINATES

Northing: 352365.484
 Easting: 573046.243

NAD 83/2007 Adjustment.
 Obtained by RTK GPS observations.

I hereby certify that this survey, plan, or report was prepared by me or under my direct supervision, and that I am a duly Licensed Land Surveyor under the laws of the State of Minnesota.

Jarrett M. Leas
 signature

1-14-14
 date

Jarrett M. Leas, Minnesota License No. 42619

Page 1 of 2 A000599887



Statement of Evidence

Northeast corner of Section 23, Township 139 North, Range 28 West, 5th Principal Meridian.

- 1864 The US General Land Office, in notes of the subdivision of Township 139 North, Range 28 West, set a post for the original corner and referenced it as follows:
12" Br. Oak N 18° E 40 links 6" W. Maple N 55° W 25 links
30" W. Pine S 62° E 19 links 36" W. Pine S 48° W 41 links
Said records are on file with the Minnesota Historical Society, St. Paul, Minnesota, copies are filed with the Cass County Surveyor's Office (CCSO).
- 1919 B. Clark, LS 231, Survey Record Number 434, Book C, page 337, on file in the CCSO, indicates an iron pipe was set, stating, "went south to the cor. Sec. 13-14-23-24. Found a Pine stump B.T. Oak 10 N 16° E 26.2 ft. So being satisfied this is the old gov't cor. I set an iron pipe 2 ½ ft. long 3 in diam. Put 2-40 penny spikes in bottom end of post set the same in ground 2 ft. piled in stone and clay around it. Stamped on cap S. 13-14-23-24." A new witness tree was marked as follows:
10" Oak S 45° W 57.2 feet
- 1922 B. Clark, LS 231, County Resurvey, on file in the Cass County Recorder's Office, document number 69795, indicates Iron Monument.
- 1938 CCC Washburn Lake field book no.12, page 14, on file at the DNR office in Brainerd show CCC personnel found a 2" capped and scribed iron pipe at 5083' from the east and 202.9' offset south from their line. The 1919 Clark bearing tree was also located listed as; 14" B. Oak S 52½° W 58 feet.
- 2013 KLJ field crews searched the area and found nothing. This corner was set lost by double proportion between the NE 11, NE 24, E ¼ 23, and N ¼ 23. A 5/8" x 24" rebar with plastic cap stamped "Leas MN 42619" was set to mark the corner position and is witnessed with the ties shown on the front of this certificate.
- 2013 November 2013, Survey crew from North West Survey & Engineering found the 1919 B. Clark 2 ½ inch capped pipe at the Northeast Corner of Section 24, T 139 N, R 28 W.
- 2013 November 2013, KLJ used the position of the Clark pipe at the Northeast Corner of Section 24, T 139 N, R 28 W, to compute a lost position for this corner. KLJ field crews then performed another search of this area for evidence of the corner and found nothing. Jarrett Leas, RLS #42619, after analysis of record and survey information accepts this monument as the correct perpetuation of the corner