

# CERTIFICATE OF LOCATION OF GOVERNMENT CORNER

North Quarter Corner of Section 19  
Township 139 N, Range 27 W, 5th P.M.  
STATE OF MINNESOTA, COUNTY OF Cass



A000599882

OFFICE OF THE COUNTY RECORDER  
CASS COUNTY, MINNESOTA  
CERTIFIED, FILED, AND/OR  
RECORDED ON

1/24/2014 1:33:45 PM

AS DOC #: A000599882

PAGES: 2

REC FEES: 0.00

KATHRYN M. NORBY  
CASS COUNTY RECORDER

BY SR Dep

Page 1 of 2 A000599882

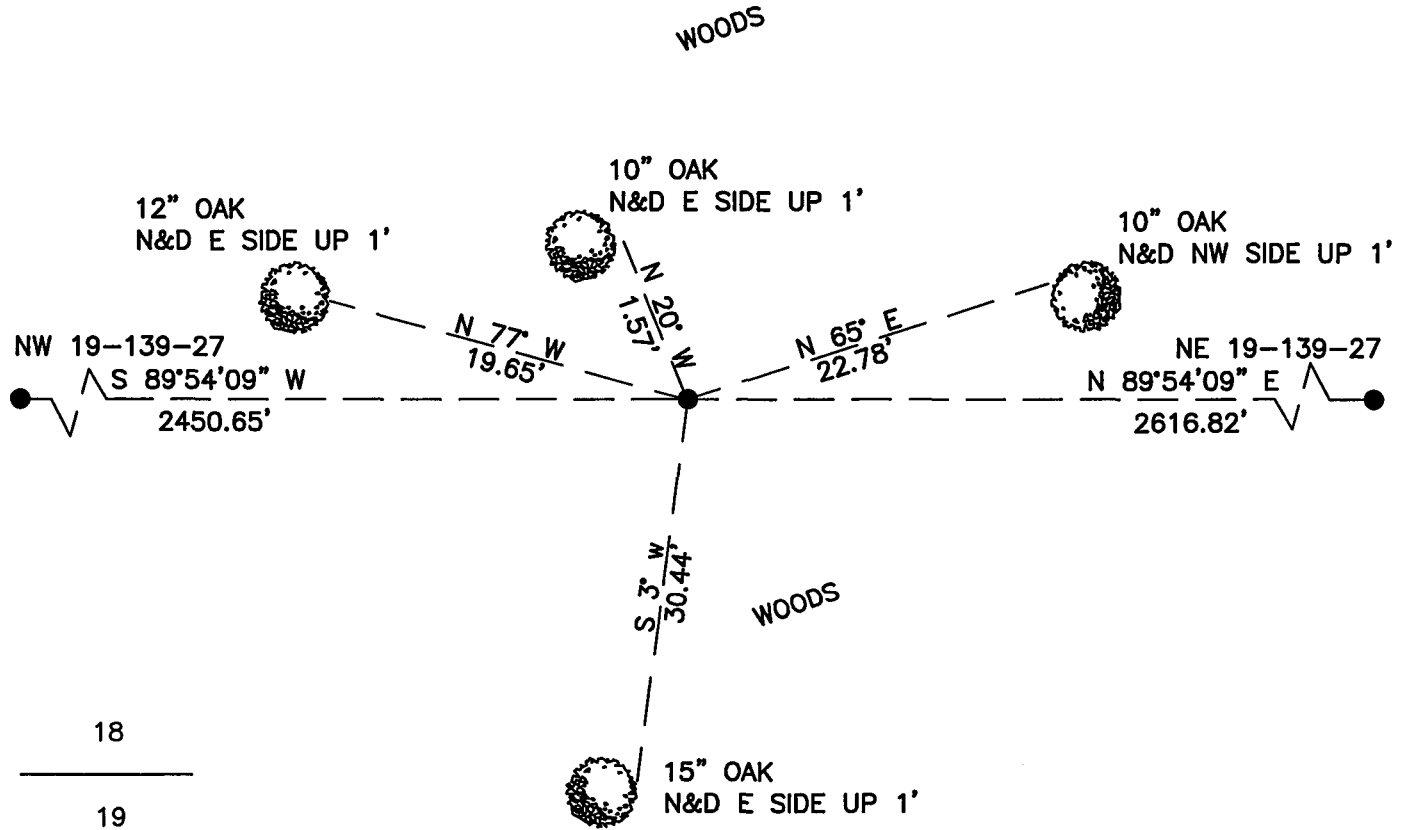
On \_\_\_\_\_, found a(n): \_\_\_\_\_  
DATE

- left monument as found
- removed monument (explain)
- lowered monument
- raised monument

On 12/2/2013, set a(n): 5/8"x24" Rebar With Plastic Cap  
DATE  
Stamped "Leas MN 42619" up 0.5'.

See "Statement of Evidence" for further details (on back)

(reserved for recording data)



### "SKETCH OF REFERENCE TIES"

(not to scale - bearings are magnetic)

Ties are measured to center of monument unless otherwise noted.

UNITS =  Metric  English

### CASS COUNTY SOUTH COORDINATES

Northing: 352273.920  
Easting: 580664.315

NAD 83/2007 Adjustment.  
Obtained by RTK GPS observations.

I hereby certify that this survey, plan, or report was prepared by me or under my direct supervision, and that I am a duly Licensed Land Surveyor under the laws of the State of Minnesota.

signature

1-14-14  
date

Jarrett M. Leas, Minnesota License No. 42619



Statement of Evidence

**North Quarter corner of Section 19, Township 139 North, Range 27 West, 5th Principal Meridian.**

- 1864    The US General Land Office, in notes of the subdivision of Township 139 North, Range 27 West, set a post for the original corner and referenced it as follows:  
6" Maple      S 30° E      12 links                      9" Maple      N 20° W      38 links  
Said records are on file with the Minnesota Historical Society, St. Paul, Minnesota, copies are filed with the Cass County Surveyor's Office (CCSO).
- 1937    CCC Washburn Lake field book 1, page 7, on file at the DNR office in Brainerd show CCC personnel set an approximate ¼ corner 40 chains from the west between two approximate section corners.
- 2013    KLJ field crews searched the area and found nothing. This corner was set lost by single proportion between the NW 19 and the NE 19. A 5/8" x 24" rebar with plastic cap stamped "Leas MN 42619" was set to mark the corner position and is witnessed with the ties shown on the front of this certificate.
- 2013    November 2013, Survey crew from North Western Survey & Engineering found the 1919 B. Clark 2 ½ inch capped pipe at the Northeast Corner of Section 24, T 139 N, R 28 W.
- 2013    November 2013, KLJ used the position of the Clark pipe at the Northeast Corner of Section 24, T 139 N, R 28 W, to compute a lost position for this corner. KLJ field crews then performed another search of this area for evidence of the corner and found nothing. Jarrett Leas, RLS #42619, after analysis of record and survey information accepts this monument as the correct perpetuation of the corner.