

CERTIFICATE OF LOCATION OF GOVERNMENT CORNER

Northeast Corner of Section 32

Township 145 N , Range 26 W , 5th P.M.

STATE OF MINNESOTA, COUNTY OF CASS



A000599555

OFFICE OF THE COUNTY RECORDER
CASS COUNTY, MINNESOTA
CERTIFIED, FILED, AND/OR
RECORDED ON

1/9/2014 1:30:05 PM

AS DOC #: A000599555

PAGES: 2

REC FEES: 0.00

KATHRYN M. NORBY
CASS COUNTY RECORDER

BY SR _____ Dep

On _____, found a(n): _____

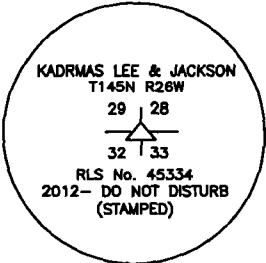
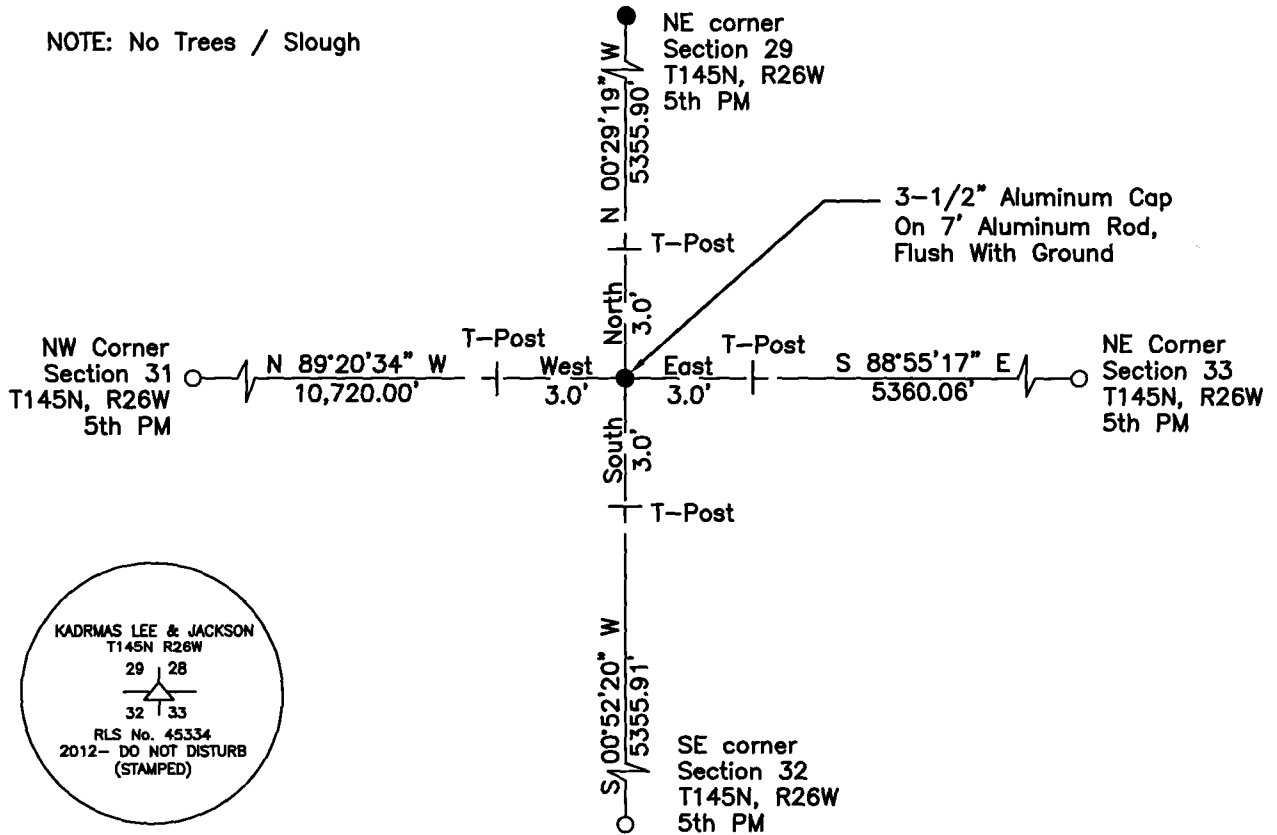
- left monument as found
- lowered monument
- removed monument (explain)
- raised monument

On 3/6/2012, set a(n): 3-1/2" Aluminum Cap On 7' Aluminum Rod, Flush With Ground

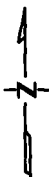
See "Statement of Evidence" for further details (on back)

(reserved for recording data)

NOTE: No Trees / Slough



"SKETCH OF REFERENCE TIES" (not to scale - bearings are magnetic)



Ties are measured to center of monument unless otherwise noted.

UNITS = Metric English

UTM COORDINATES, ZONE 15

Northing: 17202732.607

Easting: 1395366.011

NAD 83/1996 Adjustment.

Obtained by RTK GPS observations.

I hereby certify that this survey, plan, or report was prepared by me or under my direct supervision, and that I am a duly Licensed Land Surveyor under the laws of the State of Minnesota.

Ross Wamre
signature

6/6/13
date

Ross Wamre, Minnesota License No. 45334

Page 1 of 2 A000599555



STATEMENT OF EVIDENCE: Corner common to Sections 28, 29, 32 and 33 of Township 145 North, Range 26 West of the 5th Principal Meridian.

1876; Benjamin C. Baldwin, for the Government Land Office established this corner and set a wooden post in a marsh on the bank of a River. No witness ties were available.

2010; Kadrmas, Lee & Jackson crew found no evidence of the corner. Or the witness corners to the North and East.

2012; Ross Wamre, RLS #45334, set a 3½" aluminum cap on a 7' aluminum rod, flush with ground at a location lost double proportionate measurement location to the Northeast Corner of Section 29, the Northwest Corner of Section 31, the North Quarter Corner of Section 33, and the Southeast Corner of Section 32. Witnesses found and established as shown on the face of this certificate.

Contacts pertaining to this corner are as follows:

Itasca County Recorder's Office

Itasca County Engineers Office

Itasca County Surveyors Office

Northern Engineering and Consulting Inc.

United States Forest Service

MnDOT – District Office 2

Bureau of Indians Affairs – Bemidji

Bureau of Land Management's (BLM) Northeastern States Field Office