



A000599323

OFFICE OF THE COUNTY RECORDER
CASS COUNTY, MINNESOTA
CERTIFIED, FILED, AND/OR
RECORDED ON

12/30/2013 3:43:08 PM

AS DOC #: A000599323

PAGES: 2

REC FEES: 0.00

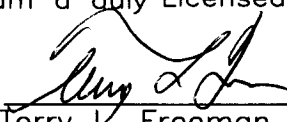
KATHRYN M. NORBY
CASS COUNTY RECORDER

BY SR _____ Dep

Page 1 of 2
A000599323

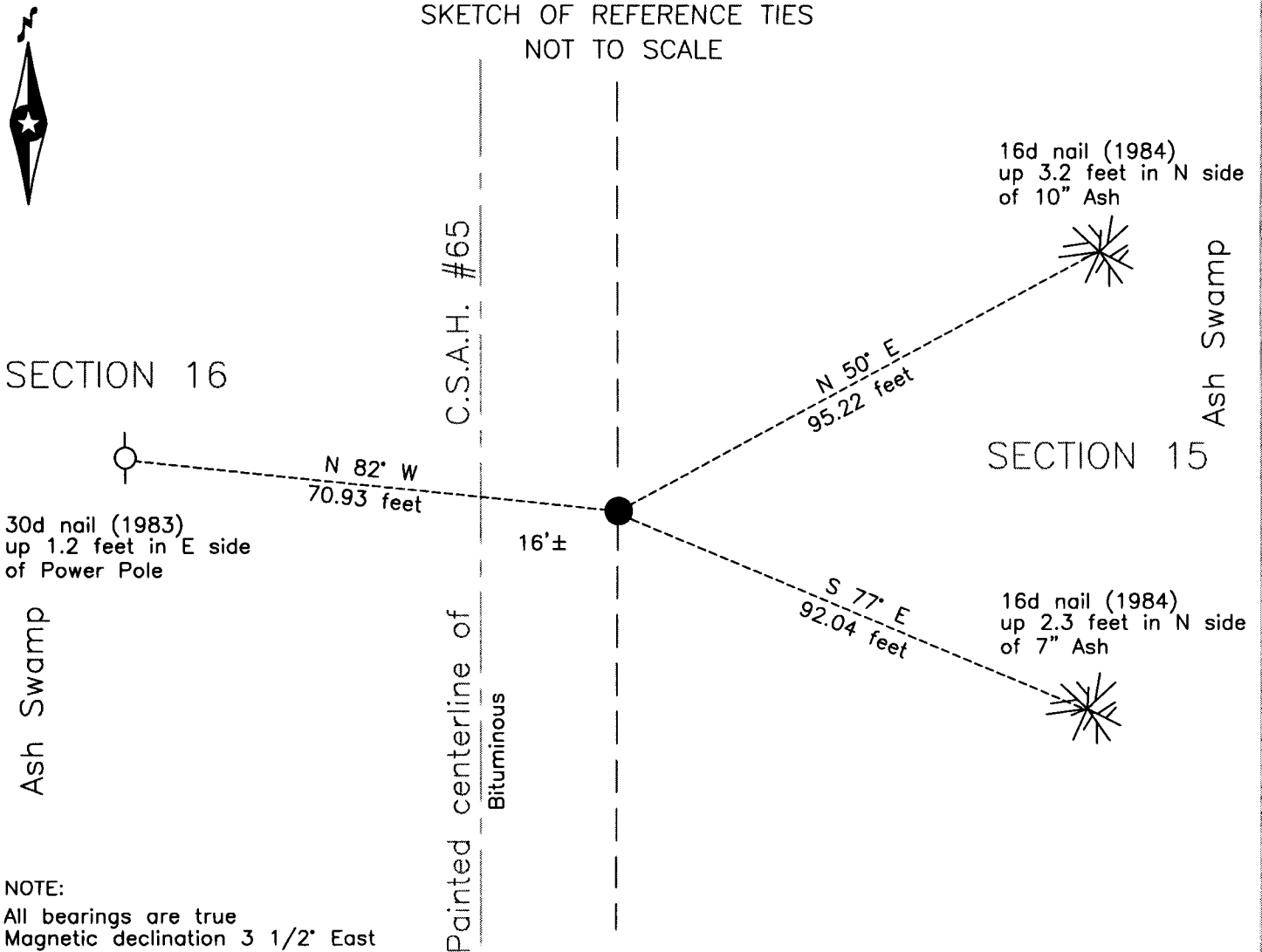
Twp 143 Rge 25 Index No. L.0-13.0

I hereby certify that this survey, plan or report was prepared by me or under my direct supervision and that I am a duly Licensed Land Surveyor under the laws of the State of Minnesota.


Terry L. Freeman, Cass County Surveyor
Date 12/30/13 MN License No. 21367

CERTIFICATE OF LOCATION OF GOVERNMENT CORNER

SKETCH OF REFERENCE TIES
NOT TO SCALE



NOTE:
All bearings are true
Magnetic declination 3 1/2° East

East Quarter corner of Section 16, Township 143 N., Range 25 W., 5th P.M.
State of Minnesota, County of Cass

At the corner location shown on the sketch:

On 9 May 13 found a 1.5 inch copper cap on 3/4 inch copper pin (copperweld),
down 1.1 feet, 16 feet± east of centerline CSAH #65.

left monument as found lowered monument removed monument (explain)

On _____ placed _____

Statement of evidence relative to this corner location is on the back of this page.



Index No. L.0-13.0

Statement of Evidence

East Quarter corner of Section 16, Township 143 North, Range 25 West, 5th Principal Meridian.

- July 1872 E.W. Griffin, General Land Office (GLO) Deputy Surveyor, set a post for the original corner in his subdivision of this township and referenced it as follows:
8" Tamarack S 60° E 10 links (6.60 feet) 7" Tamarack N 88° W 5 links (3.30 feet)
Said records are on file at the Minnesota Historical Society, St. Paul, Minnesota, copies are filed with the Cass County Surveyor's Office (CCSO).
- April 1900 F.V. Abbot, Major, United States Army, Corps of Engineers (ACE), Lake Pokegama Reservoir Map and notes on file with ACE St. Paul office and copies were made of said notes in 1982 by the United States Department of Agriculture, Forest Service (USFS) offices in Cass Lake, MN. The map by symbol indicates this to be a known corner.
- Oct. 1965 J.Ekstrom, USFS, Field Book #2, page 14, on file in the offices in Cass Lake, MN, notes state "Search area falls in Road No. 2111 no evidence found."
- March 1966 D. Cole, LS 1286, Cass County Engineer, CSAH #65, State Project No. 11-665-02, on file in the Cass County Highway Department (CCHD), notes indicate corner assumed at old fence line to West, 19 feet more or less west at centerline Station 592+26.0.
- July 1976 L.D. Gilbert, Bureau of Land Management (BLM), Supervisory Cadastral Surveyor, notes state "at proportionate dist. There is no remaining evidence of the orig. cor. Set an aluminum post 28 ins. Long, 2 1/2 ins. Diam., 24 ins. In the ground" and referenced it as follows:
11" Ash S 58° E 34 links(22.44 feet) 9" Ash N 12° W 36 1/2 links(24.09 feet)
- Circa 1980 G. Steveson, LS 12684, Cass County Surveyor, worksheet on file in the CCSO, indicates errors in the BLM survey.
- Aug. 1983 A.E. Carrow, BLM, Cadastral Surveyor, notes state "at a grant boundary proportionate position based on the Corps of Engineers survey of 1900, which had orig. evidence of 1/4 sec. cor. there is no remaining evidence of the orig. cor. From this point, the 1/4 sec. cor. Of secs. 15 and 16, erroneously reestablished in 1976, bears N 85°20' E., 1.23 chs. Dist., set, mkd. And witnessed as described in the official record. I remove the aluminum post, destroy the marks on the bearing trees, and at the proportionate cor. Position." Set a Copper weld, 30 ins. Long, 9/16 in. diam., 30 ins. in the ground, with cap and referenced it as follows:
10" Ash S 89° E 152 links (100.32 feet) Power Pole N 80° W 108 links (71.28 feet)
- May 1984 G.Kosenko, USFS, Field Book #4, page 47, on file in the offices in Cass Lake, MN, notes indicate recovered BLM monument flush in shoulder of County Road #65 and lowered to 1.0 foot below the surface, 16.25 feet east of centerline The following new accessory are noted:
6" Ash S 77° E 92.04 feet 9" Ash N 50° E 95.22 feet
- May 2013 B.Hippen, technician, CCSO, notes on file in the CCSO, found BLM Copper weld, down 1.1 foot, 16 feet, more or less, east of the center line of CSAH #65 and witnessed as follows:
7" Ash(1984) S 77° E 92.04 feet 10" Ash(1984) N 50° E 95.22 feet
Power Pole(1983) N 80° W 70.93 feet

The recovered and established witnesses for this corner position are shown on the face of this document.

Analysis of the recovered record data, field evidence and survey measurements, indicates that the position recovered in 2013 by the CCSO, is the accepted location of this corner.

County Coordinates (Cass County North)

Northing 245184.36

Easting 594034.95