



A000599320

OFFICE OF THE COUNTY RECORDER  
CASS COUNTY, MINNESOTA  
CERTIFIED, FILED, AND/OR  
RECORDED ON

12/30/2013 3:43:05 PM

AS DOC #: A000599320

PAGES: 2

REC FEES: 0.00

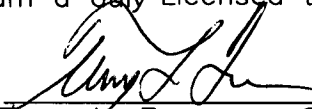
KATHRYN M. NORBY  
CASS COUNTY RECORDER

BY SR \_\_\_\_\_ Dep

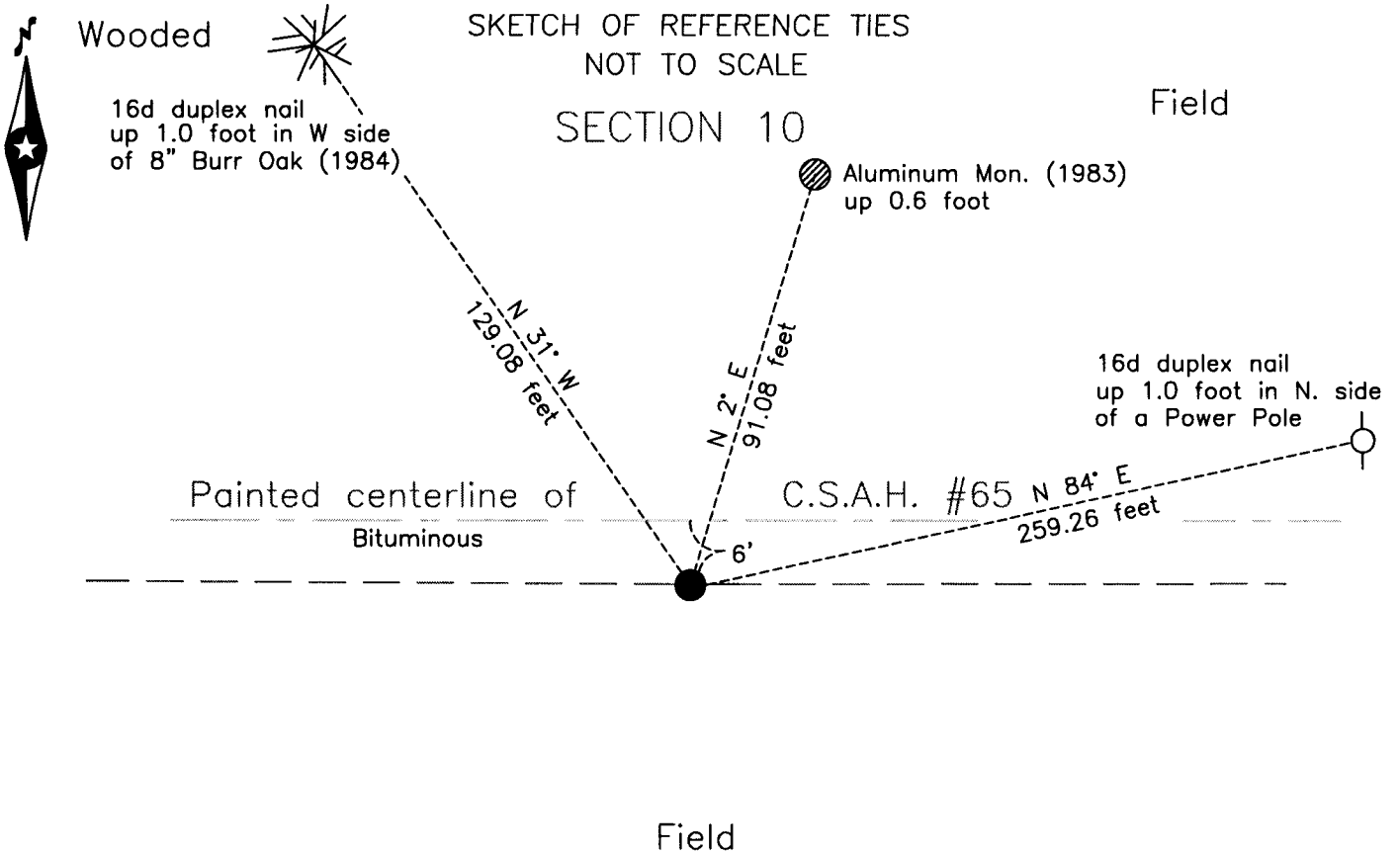
Page 1 of 2 A000599320

Twp 143 Rge 25 Index No. J.0-15.0

I hereby certify that this survey, plan or report was prepared by me or under my direct supervision and that I am a duly Licensed Land Surveyor under the laws of the State of Minnesota.

  
Terry L. Freeman, Cass County Surveyor  
Date 12/30/13 MN License No. 21367

### CERTIFICATE OF LOCATION OF GOVERNMENT CORNER



NOTE:

All bearings are true  
Magnetic declination 3 1/2° East

### SECTION 15

North Quarter corner of Section 15, Township 143 N., Range 25 W., 5th P.M.  
State of Minnesota, County of Cass

At the corner location shown on the sketch:

On 8 May 13 found a 1.5 inch copper cap on 3/4 inch copper pin (copperweld),  
down 0.6 foot, 6 feet ± south of centerline CSAH #65.

left monument as found     lowered monument     removed monument (explain)

On 9 Oct 13 placed 1.5 inch copper cap copperweld, down 0.05 foot, at  
recovered position, 6 feet ± south of new centerline CSAH #65.

Statement of evidence relative to this corner location is on the back of this page.

**Index No. J.0-15.0**Statement of Evidence**North Quarter corner of Section 15, Township 143 North, Range 25 West, 5th Principal Meridian.**

- July 1872 E.W. Griffin, General Land Office (GLO) Deputy Surveyor, set a post for the original corner in his subdivision of this township and referenced it as follows:  
6" Spruce S 53° E 5 links (3.30 feet) 5" W. Pine N 65° E 6 links (3.96 feet)  
Said records are on file at the Minnesota Historical Society, St. Paul, Minnesota, copies are filed with the Cass County Surveyor's Office (CCSO).
- April 1900 F.V. Abbot, Major, United States Army, Corps of Engineers (ACE), Lake Pokegama Reservoir Mapand notes on file with ACE St. Paul office and copies were made of said notes in 1982 by the United States Department of Agriculture, Forest Service (USFS) offices in Cass Lake, MN. The map by symbol indicates this to be a known corner.
- Circa 1910 G.A. Ralph, Curo Book Number 82, page 48, on file in the CCSO, indicate an old post at the subject corner and old BT as follows:  
8" Spruce N 44°30' E 5.50 feet  
New BT listed as follows:  
5" Cedar N 5°30' E 46.20 feet Pine stub S 19° W 42.30
- March 1966 D. Cole, LS 1286, Cass County Engineer, CSAH #65, State Project No. 11-665-02, on file in the Cass County Highway Department (CCHD), notes indicate corner assumed at old fence line to North, plan indicates the subject corner at centerline P.I. Station 639+13.5 and witnesses as follows:  
6" Spruce N W 93.50 feet Power Pole N E 86.50  
5" Ash N E 84.40 feet
- July 1976 L.D. Gilbert, Bureau of Land Management (BLM), Supervisory Cadastral Surveyor, notes state "at proportionate dist. There is no remaining evidence of the orig. cor." set a copper-coated steel stake, 26 ins. Long, 6 ins. below the asphalt surface of Forest Service Road No. 111, with copper cap and referenced it as follows:  
2.5" Alum post N 8° E 73.0 feet 2.5" Alum post N 31° W 85.9 feet
- Circa 1980 G. Steveson, LS 12684, Cass County Surveyor, worksheet on file in the CCSO, indicates errors in the BLM survey.
- Aug. 1983 A.E. Carrow, BLM, Cadastral Surveyor, notes state "at a grant boundary proportionate position based on the Corps of Engineers survey of 1900, which had orig. evidence of ¼ sec. cor. there is no remaining evidence of the orig. cor. From this point, the ¼ sec. cor. Of secs. 10 and 15, erroneously reestablished in 1976, bears N 80°36' W., 1.93 chs. Dist., set, mkd. And witnessed as described in the official record. I remove the copper-coated (Copperweld), and the aluminum post reference monuments, and at the proportionate cor. Position." Set a Copperweld, 30 ins. Long, 9/16 in. diam., 2 ins. below the surface of a paved road, with cap and referenced it as follows:  
Power Pole N 46° E 137 links (90.42 feet) 2.5" Alum post N 3° W 138 links (91.08 feet)
- May 1984 G.Kosenko, USFS, Field Book #4, page 52, on file in the offices in Cass Lake, MN, notes indicate recovered BLM monument in East bound lane of County Road #65, 3 inches below the surface, 5.5 feet south of centerline and the 1983 witness monument. The following new accessory is noted:  
5" Oak N 31° W 129.08 feet
- May 2013 B.Hippen, technician, CCSO, records of the CCSO, prior to reconstruction of CSAH #65, found copper weld down 0.6 foot, 6 feet, more or less, south of the centerline of Co. Rd. No.65 and witnessed as follows:  
2.5" Alum post N 2° E 91.08 feet (BLM) 5" Oak N 31° W 129.08 feet (USFS)  
P. Pole N 84° E 259.26 feet
- Oct. 2013 B.Hippen, technician, records of the CCSO, reset copper weld from witnesses, down 0.05 foot, 6 feet, more or less, south of new centerline of CSAH #65.  
The recovered and established witnesses for this corner position are shown on the face of this document.

**Analysis of the recovered record data, field evidence and survey measurements, indicates that the position recovered in 2013 by the CCSO, is the accepted location of this corner.**

**County Coordinates (Cass County North)**

**Northing 247742.65**

**Easting 596586.63**