



A000598892

OFFICE OF THE COUNTY RECORDER
CASS COUNTY, MINNESOTA
CERTIFIED, FILED, AND/OR
RECORDED ON

12/12/2013 9:19:59 AM

AS DOC #: A000598892

PAGES: 2

REC FEES: 0.00

KATHRYN M. NORBY
CASS COUNTY RECORDER

BY SR Dep

Twp 135 Rge 31 Index No. E.0-17.0

CERTIFICATE OF LOCATION OF GOVERNMENT CORNER

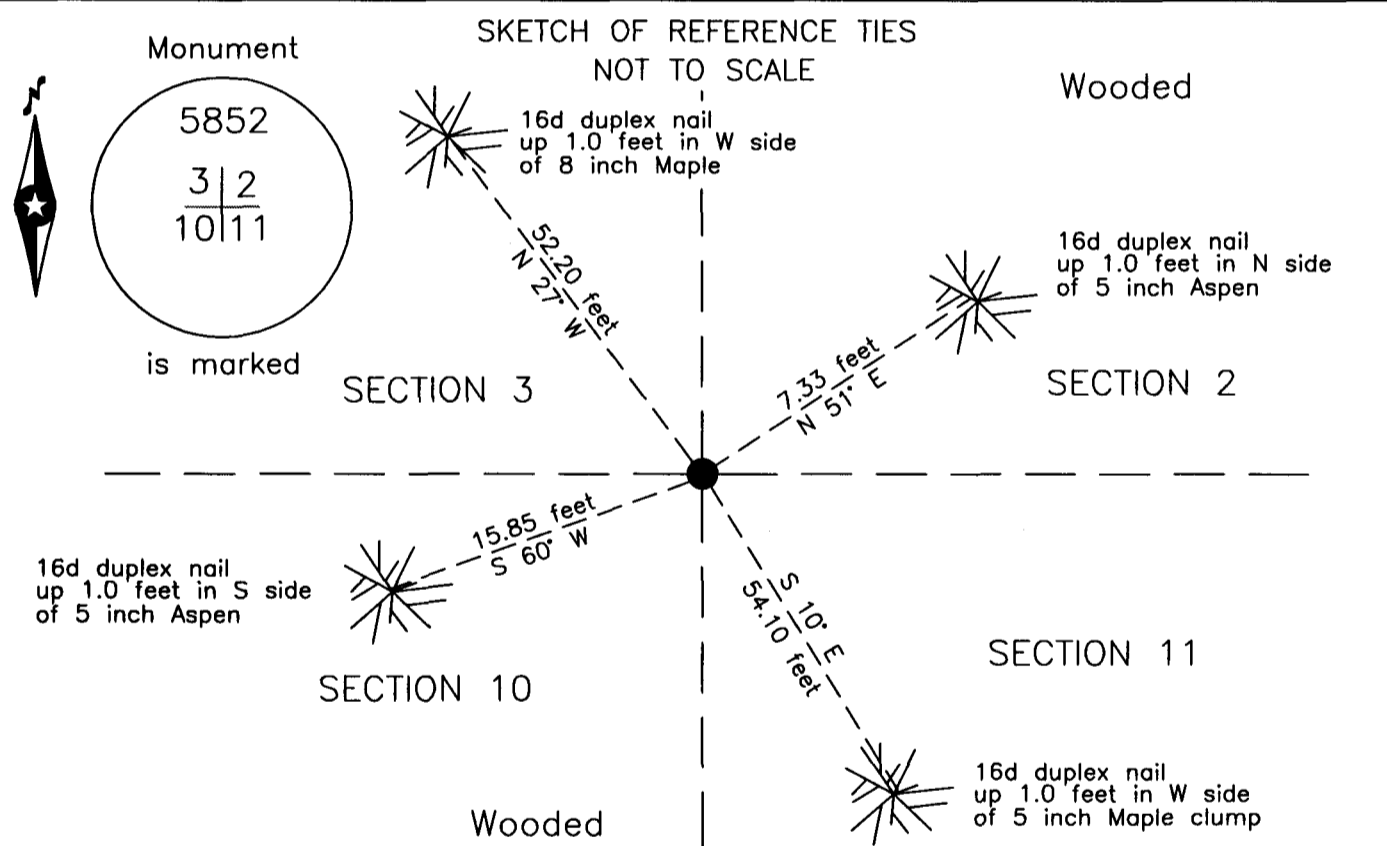
Northeast corner of Section 10, Township 135 N., Range 31 W., 5th P.M.
State of Minnesota, County of Cass

At the corner location shown on the sketch:

On 6 April 2006 found a 1.75 inch OD iron pipe with plumber cap, up 2.0 feet.

left monument as found lowered monument removed monument (explain)

On _____ placed _____



NOTE:
All bearings are true

Statement of evidence relative to this corner location is on the back of this page.

I hereby certify that this survey, plan or report was prepared by me or under my direct supervision and that I am a duly Licensed Land Surveyor under the laws of the State of Minnesota.

Terry L. Freeman, Cass County Surveyor

Date 12/11/13 MN License No. 21367



Index No. E.0-17.0

Statement of Evidence

Northeast corner of Section 10, Township 135 North, Range 31 West, 5th Principal Meridian.

Oct. 1870 R.Cronk, General Land Office (GLO) Deputy Surveyor, in the notes of the subdivision of Township 135 North, Range 31 West, set a post for the original corner and referenced it as follows:
16" W. Pine S 81 1/2° E 30 links (19.80 feet) 7" Maple N 77° E 25 links (16.50 feet)
24" W. Pine S 21 1/2° W 39 links (25.74 feet) 8" Maple N 67° W 47 links (31.02 feet)
Said records are on file at the Minnesota Historical Society, St. Paul, Minnesota, copies are filed with the Cass County Surveyor's Office (CCSO).

Circa 1972 D. Coulter, Surveyor, LS 5852, copy of work sheet on file in the CCSO, set 1.25" by 5'3" I.P., up 2', for corner and referenced as follows:
12" Poplar(Twin) S 66°45' W 15.30 feet 14" Poplar N 30°45' W 22.30 feet
5" Poplar N 18°15' W 41.05 feet 4" Poplar N 23°15' E 21.20 feet
3" R. Oak N 85° E 9.30 feet

Feb. 1972 D. Coulter, Surveyor, LS 5852, Plat of WILDERNESS PARK ESTATES, on file in the Cass County Recorders Office (CCRO) as Document Number 204472, and copy on file in the CCSO, denotes iron pipe monument.

April 2006 B.Hippen technician, CCSO, records of the CCSO, found a 1.75 inch outside diameter iron pipe with a plumber cap, up 2.0 feet. The old witness trees have been blown down years ago but are still in evidence. The following new witness trees were marked:
8" Maple N 27° W 52.20 feet 5" Aspen N 51° E 7.33 feet
5" Maple clump S 10° E 54.10 feet 5" Aspen S 60° W 15.85 feet

Aug. 2013 B.Hippen, CCSO technician, records of the CCSO, found the monument and witnesses from 2006. The monument, recovered and established references for the position are shown on the face of this document.

Analysis of the recovered record data, field evidence and survey measurements, indicates that the monument set by Coulter is the accepted location of this corner.

County Coordinates (Cass County South)

Northing 235979.18

Easting 476171.46