



A000598889

OFFICE OF THE COUNTY RECORDER
CASS COUNTY, MINNESOTA
CERTIFIED, FILED, AND/OR
RECORDED ON

12/12/2013 9:19:56 AM

AS DOC #: A000598889

PAGES: 2

REC FEES: 0.00

KATHRYN M. NORBY
CASS COUNTY RECORDER

BY SR Dep

TwP 135 Rge 31 Index No. A.0-17.0

CERTIFICATE OF LOCATION OF GOVERNMENT CORNER

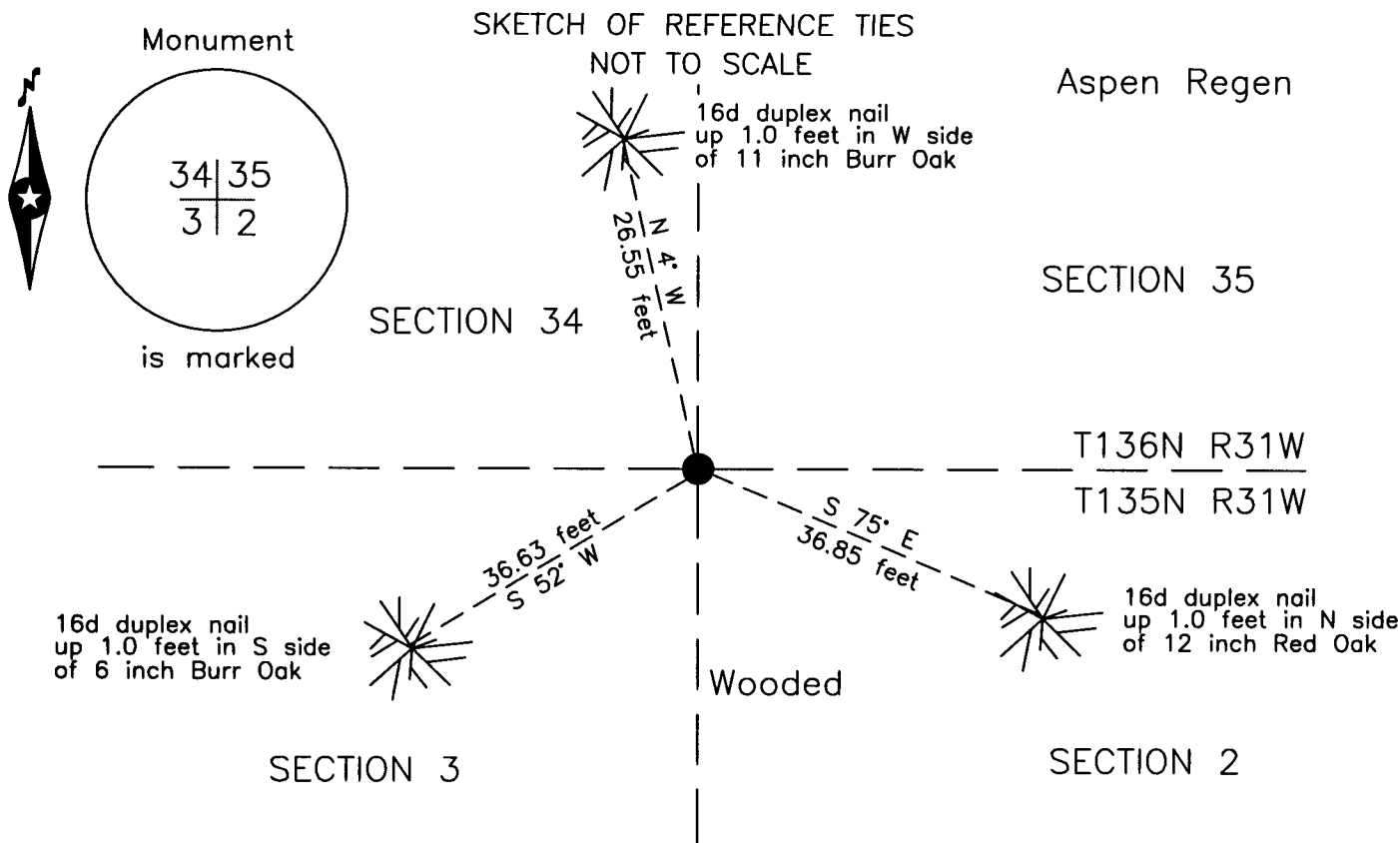
Northeast corner of Section 3, Township 135 N., Range 31 W., 5th P.M.
State of Minnesota, County of Cass

At the corner location shown on the sketch:

On 14 April 2006 found a 2.5 inch OD iron pipe with plumber cap, in concrete, flush.

left monument as found lowered monument removed monument (explain)

On _____ placed _____



NOTE:
All bearings are true

Statement of evidence relative to this corner location is on the back of this page.

I hereby certify that this survey, plan or report was prepared by me or under my direct supervision and that I am a duly Licensed Land Surveyor under the laws of the State of Minnesota.

Terry L. Freeman, Cass County Surveyor

Date 12/11/13 MN License No. 21367



Index No. A.0-17.0

Statement of Evidence

Northeast corner of Section 3, Township 135 North, Range 31 West, 5th Principal Meridian.

June 1858 E.N.Darling, General Land Office (GLO) Deputy Surveyor, in notes of the Township line between Townships 135 and 136 North, Range 31 West, set a post for the original corner and referenced it as follows:

24" Pine S 82° E 43 links (28.38 feet) 30" Pine S 40° W 33 links (21.78 feet)
18" W. Birch N 77° W 52 links (34.32 feet) 7" Bl. Oak N 18° E 20 links (13.20 feet)

Said records are on file at the Minnesota Historical Society, St. Paul, Minnesota, copies are filed with the Cass County Surveyor's Office (CCSO).

Oct. 1912 M.A. Kemp, Deputy County Surveyor, Surveyors Record Number 240, Book B, page 19, on file in the CCSO, states "We find the stumps of the N.E. S.E. & S.W. and a stake which checks fairly well for course and distance. By proportionate measurement we set a 2 x 2 x 30 inch oak hub and tack for the true corner". He referenced this as follows;

7" Black Oak N 23°42' W 67.60 feet 6" Poplar N 50° E 70.90 feet

On page 28 he states he placed "a galvanized iron pipe, 2 1/2 by 48 inches in size" at this position.

Oct. 1912 M.A. Kemp, Township Road Order, Surveyor's Report, on file in the CCSO, for a road in Section 34 and 35, Township 136 North, Range 31 West, indicates he set this corner between the southeast corners of Section 32 and 35.

April 2006 B.Hippen, CCSO technician, records of the CCSO, found a 2.5" outside diameter iron pipe, in concrete, flush, on top of a ridge, on south edge of Aspen regeneration and witnessed as follows:

11" B. Oak N 4° W 26.55 feet 12" R. Oak S 75° E 36.85 feet
6" B. Oak S 52° W 36.63 feet

Aug. 2013 B.Hippen, CCSO technician, records of the CCSO, found the monument and witnesses from 2006. The monument, recovered and established references for the position are shown on the face of this document.

Analysis of the recovered record data, field evidence and survey measurements, indicates that the monument recovered by the CCSO is the correct perpetuation of this corner.

County Coordinates (Cass County South)

Northing 241140.43
Easting 476142.10