



A000598882

OFFICE OF THE COUNTY RECORDER
CASS COUNTY, MINNESOTA
CERTIFIED, FILED, AND/OR
RECORDED ON

12/12/2013 9:19:49 AM

AS DOC #: A000598882

PAGES: 2

REC FEES: 0.00

KATHRYN M. NORBY
CASS COUNTY RECORDER

BY SR Dep

Page 1 of 2
A000598882

Twp 143 Rge 28 Index No. J.0-21.0

CERTIFICATE OF LOCATION OF GOVERNMENT CORNER

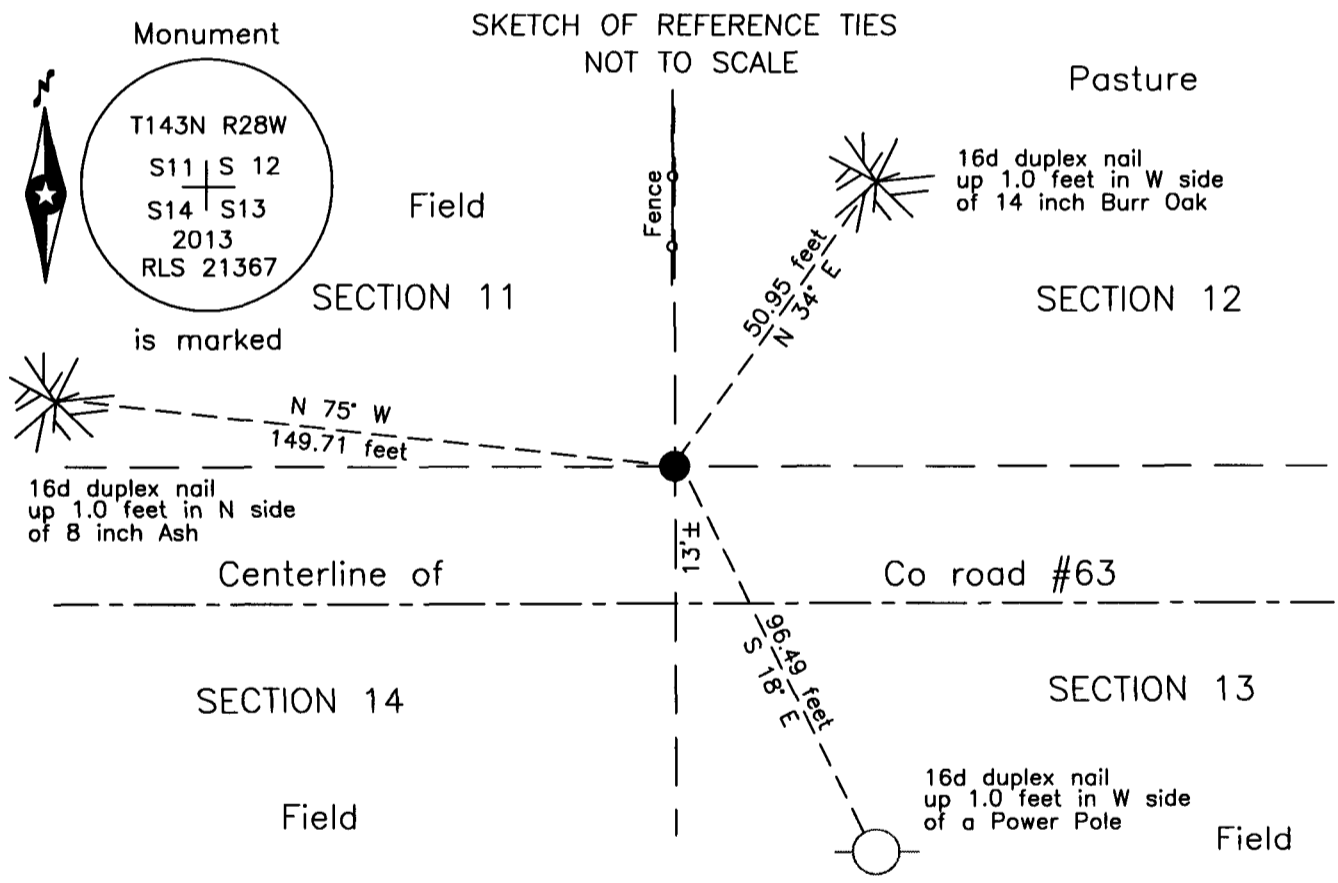
Northeast corner of Section 14, Township 143 N., Range 28 W., 5th P.M.
State of Minnesota, County of Cass

At the corner location shown on the sketch:

On 29 Aug. 2012 found a 1 inch pin, down 6 feet, on fence line north,
13'± north of centerline County Road #63.

left monument as found lowered monument removed monument (explain)

On 25 Sept. 2013 placed a 1 inch Aluminum tube with Aluminum cap, down 0.05'
13'± North of center line, 1 inch pin adjacent to east.



NOTE:
All bearings are true

Statement of evidence relative to this corner location is on the back of this page.

I hereby certify that this survey, plan or report was prepared by me or under my direct supervision and that I am a duly Licensed Land Surveyor under the laws of the State of Minnesota.

Terry L. Freeman, Cass County Surveyor
Date 12/11/13 MN License No. 21367



Index No. J.0-21.0

Statement of Evidence

Northeast corner of Section 14, Township 143 North, Range 28 West, 5th Principal Meridian.

Oct. 1873 P.H. Conger, General Land Office (GLO) Deputy Surveyor, set a post for the original corner in his subdivision of this township and referenced it as follows:
14" Birch S 81° W 24 links (15.84 feet) 10" Aspen S 69° E 13 links(8.58 feet)
10" Maple N 25° E 16 links (10.56 feet) 14" Aspen N 73° W 36 links(23.76 feet)
Said records are on file at the Minnesota Historical Society, St. Paul, Minnesota, copies are filed with the Cass County Surveyor's Office (CCSO).

May 1905 W.Hallet, employed by the Cass County Board of Commissioners, surveyed part of the Bena, Leech Lake Dam and Gould Road, the record is in Auditor's Road Record B, page 3, on file at the CCSO, the graphics indicate roads for a mile in all four directions from the subject corner. The Gould Post Office is shown to be in the northeast quadrant of the intersection.

Circa 1910 Soo Line Railroad right-of-way map, on file with the CCSO, indicates distances from this corner 1067 feet north and 1094 feet east of the centerline of the railroad and the railroad stationing of the intersection with the north line of Section 14, it also shows the angle of intersection the railroad centerline makes with the north line of Section 14. The record does not indicate what was recovered or set at the corner.

June 1916 H.F. Baldwin, deputy County Surveyor, County Record Book of Survey B, Record No. 288, page 241, and Curo Book 77, pages 63, survey of Boy Lake County Road, on file in the CCSO, states "at 5296.34 East, between 11 and 14, and 2.20 feet North of random line, we drive iron for section corner 11, 12, 13, 14, Twp 143, R 28." This makes the distance to the railroad centerline 1094 feet. There is a note on the graphics on page 224 of Book B which is leadered to the subject corner stating "Temp. Irons must be moved". It may a notation by John Curo, County Surveyor, who would have reviewed Baldwin's work and did not accept the setting of the subject corner by the single proportion method. There is no record of whether or not the monument was ever moved.

Jan. 1968 D. Cole, LS 1286, Cass County Engineer, County State Aid Highway No. 63 (CSAH #63), State Project No. 11-663-03, plan on file in the Cass County Highway Department (CCHD), indicates the subject corner to be assumed on centerline P.O.T. Station 278+67.7, the subject position is shown to be 1095.3 feet easterly of the intersection of the centerline of CSAH #63 and the centerline of the railroad. The road profile at this location indicates the proposed new grade to be close to 3 feet higher than existing ground which would have been the old road.

Aug. 2012 B.Hippen, CCSO technician and P.Swentkofske, CCHD equipment operator, records of the CCSO, prior to reconstruction of CSAH #63, excavated a 15 foot east-west by 15 foot north-south area based on record dimensions. The dig was 6 feet deep to natural soil. A one inch outside diameter iron pin leaning west, was recovered at a depth of 6 feet and located at the base. The found pin is N 30° W, 4.7 feet from a position reconstructed from the Soo Line map information on the north line, the distance to the intersection of the Rail Road centerline on the east line does not agree, however the overall distance to the East Quarter corner and the stationing of said intersection do agree favorably.

Sept. 2013 B.Hippen, CCSO technician, records of the CCSO, set an aluminum tube with aluminum cap, down 0.05 foot and placed the recovered pin adjacent on the east side, 13 feet, more or less, north of new centerline and on a fence line to north and witnessed as follows:
8" Ash N 75° W 149.71 feet Power Pole S 18° E 96.49 feet
14" Burr Oak N 34° E 50.95 feet

The monument, recovered and established references for the position are shown on the face of this document.

Analysis of the recovered record data, field evidence and survey measurements, indicates that the monument recovered by the CCSO is the accepted location of this corner.

County Coordinates (Cass County North)
Northing 248809.13
Easting 509694.31