

CERTIFICATE OF LOCATION OF GOVERNMENT CORNER

Southeast Corner of Section 34
Township 139 N, Range 27 W, 5th P.M.
STATE OF MINNESOTA, COUNTY OF Cass



A000598877

OFFICE OF THE COUNTY RECORDER
CASS COUNTY, MINNESOTA
CERTIFIED, FILED, AND/OR
RECORDED ON

12/12/2013 9:19:44 AM

AS DOC #: A000598877

PAGES: 2

REC FEES: 0.00

KATHRYN M. NORBY
CASS COUNTY RECORDER

BY SR Dep

Page 1 of 2 A000598877

On 1/16/2013, found a(n): 2" Square Tube With Aluminum
Cap up 0.5' in Lowland Area.

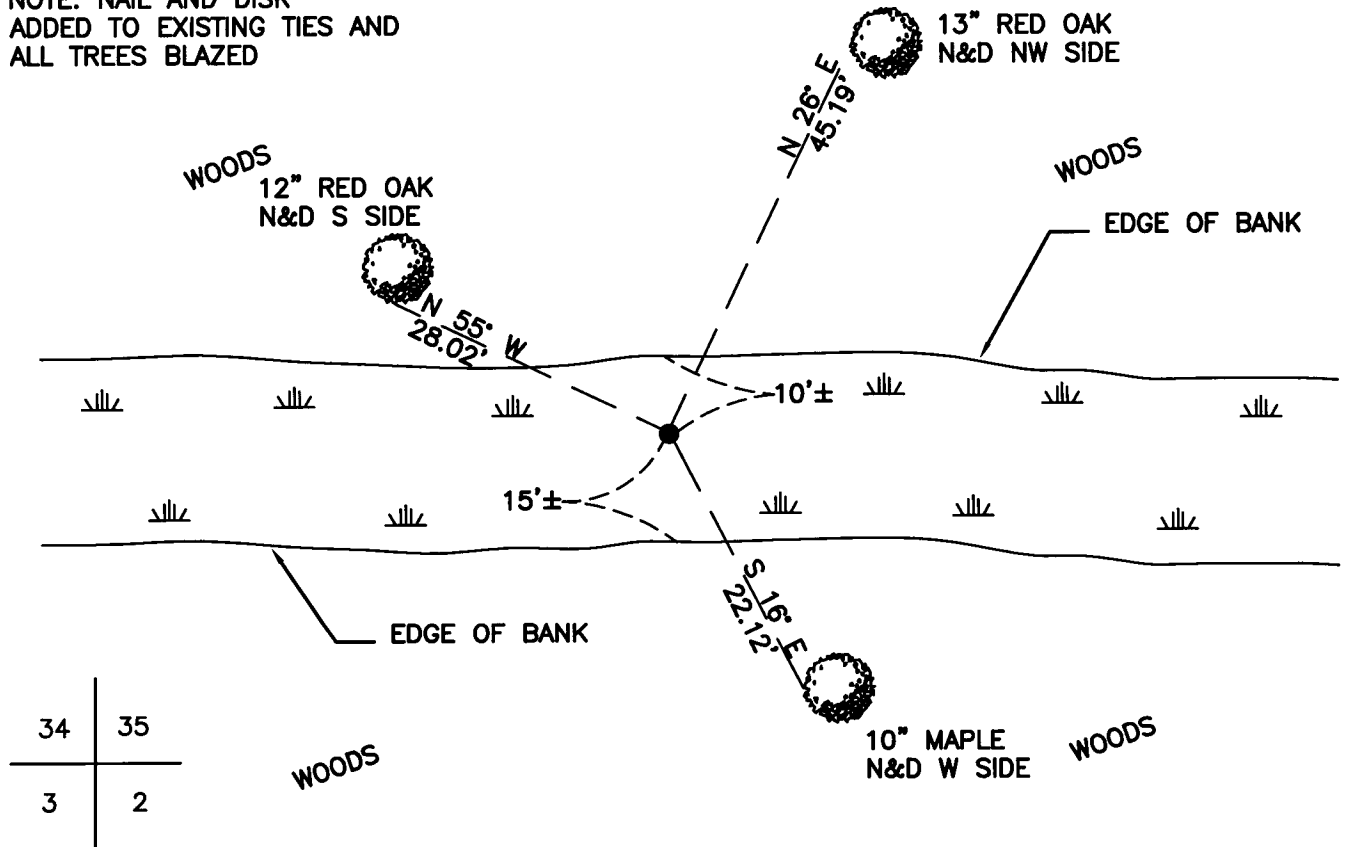
- left monument as found
- lowered monument
- removed monument (explain)
- raised monument

On _____, set a(n): _____

See "Statement of Evidence" for further details (on back)

(reserved for recording data)

NOTE: NAIL AND DISK
ADDED TO EXISTING TIES AND
ALL TREES BLAZED



"SKETCH OF REFERENCE TIES" (not to scale - bearings are magnetic)

Ties are measured to center of monument
unless otherwise noted.

UNITS = Metric English

CASS COUNTY SOUTH COORDINATES

Northing: 336400.094
Easting: 599027.674

NAD 83/2007 Adjustment.
Obtained by RTK GPS observations.

I hereby certify that this survey, plan, or report was prepared by me or under my direct supervision, and that I am a duly Licensed Land Surveyor under the laws of the State of Minnesota.

signature

9-30-13
date

Jarrett M. Leas, Minnesota License No. 42619



Statement of Evidence

Southeast corner of Section 34, Township 139 North, Range 27 West, 5th Principal Meridian.

- 1863 The US General Land Office, in notes of running the south line of Township 139 North, Range 27 West, set a post for the original corner and referenced it as follows:

7" Aspen	N 78° E	8 links	8" Aspen	S 17° E	8 links
7" Aspen	S 44° W	14 links	5" W. Birch	N 47° W	20 links

Said records are on file with the Minnesota Historical Society, St. Paul, Minnesota, copies are filed with the Cass County Surveyor's Office (CCSO).

- 1922 John Curo, LS 1428, Book A, Page 93, on file in the Crow Wing County Surveyor's Office, indicates a 2"x20" stake was set and referenced by the following:

2" Birch	S 21° W	19.5 feet	3" Oak	S 40° E	15.0 feet
----------	---------	-----------	--------	---------	-----------

- 1937 CCC Washburn Lake field book 7, page 36, on file at the DNR office in Brainerd show CCC personnel, at 79.05 chains from the east, found three 12" Pines blazed on four sides with no scribing.

- 1939 CCC Washburn Lake field book 10, page 14, on file at the DNR office in Brainerd show CCC personnel, at 5280' from the east, set a temp corner.

- 2008 Don Sigety, LS 23945, Book 129, Page 13, certificate #1336, on file in the Crow Wing County Surveyor's Office, set a 2"x2"x6" square tube monument with a stamped aluminum cap and filed a certificate of location in Crow Wing County, and is referenced by the following:

12" Red Oak	N 50° W	28.2 feet	13" Red Oak	N 26° E	45.1 feet
8" Maple	S 12° E	22.0 feet			

- 2013 A KLJ survey crew found a 2" square tube with an aluminum cap, and is witnessed with the ties shown on the front of this certificate. Jarrett Leas, RLS #42619, after analysis of record and survey information accepts this monument as the correct perpetuation of the corner.