

CERTIFICATE OF LOCATION OF GOVERNMENT CORNER

NE Corner of Section 13, Township 136N, Range 32W, 5th p.m., State of Minnesota, County of Cass

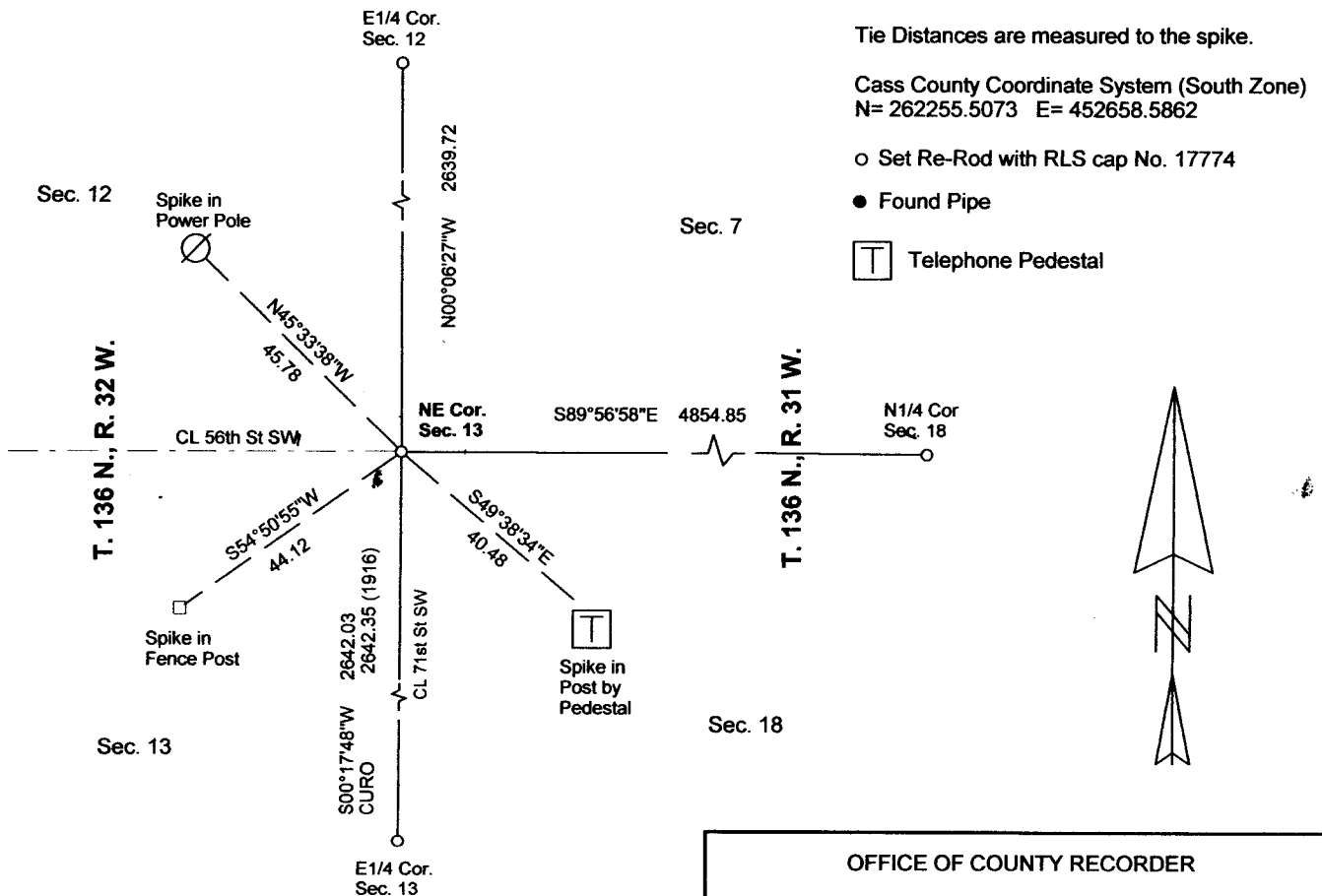
At the corner location shown on the sketch:

On _____ found a _____
Date

left monument as found lowered monument removed monument (explain)

On 05/02/2012 placed a 3/8" RE-ROD WITH RLS CAP NO. 17774, CL-CL ROADS TO SOUTH AND WEST
Date

SKETCH OF REFERENCE TIES



Tie Distances are measured to the spike.

Cass County Coordinate System (South Zone)
N= 262255.5073 E= 452658.5862

○ Set Re-Rod with RLS cap No. 17774

● Found Pipe

□ Telephone Pedestal

NOT TO SCALE

Statement of evidence relative to this corner location is on back of page.

I hereby certify that this document and the data contained herein was prepared by me or under my direct supervision.

Marvin R. Kohout 10 Oct 2012
Marvin R. Kohout Date

Registration No. 17774

Land surveyor

OFFICE OF COUNTY RECORDER



A000598676

OFFICE OF THE COUNTY RECORDER
CASS COUNTY, MINNESOTA
CERTIFIED, FILED, AND/OR
RECORDED ON

12/5/2013 9:30:43 AM

AS DOC #: A000598676

PAGES: 2

REC FEES: 0.00

KATHRYN M. NORBY
CASS COUNTY RECORDER

BY SR Dep

Page 1 of 2 A000598676



INDEX NO. J.0 – 25.0
STATEMENT OF EVIDENCE:

NORTHEAST CORNER OF SECTION 13, TOWNSHIP 136 N., RANGE 32 W., 5TH P.M.

- 1858 DEPUTY SURVEYOR EDWARD D. ATWATER, IN THE ORIGINAL GOVERNMENT SURVEY, SET A POST AND MARKED BEARING TREES.

- 1916 JOHN CURO, SURVEYOR, FINDS A HUB, SET BY HALLET, IN ROAD. CURO SETS A NEW HUB AND MAKES 2 NEW TIES. SURVEY RECORD NO. 290, BOOK "B", PAGES 247 & 252

- 2012 APRIL DOUG STILLE AND MARVIN KOHOUT, LS NO. 17774, OF KOHOUT LAND SURVEYING, SEARCHED FOR EVIDENCE AT THE INTERSECTION OF ROADS SOUTH, EAST AND WEST AND A TRAIL TO THE NORTH. NO EVIDENCE FOUND. A 3/8" REROD WAS PLACED AT THE INTERSECTION OF ROADS TO MARK THE LOCATION OF THE SECTION CORNER.