

CERTIFICATE OF LOCATION OF GOVERNMENT CORNER

WC to MC #3 Corner of Section 3, Township 140N, Range 26W, 5th p.m., State of Minnesota, County of Cass.

At the corner location shown on the sketch:

On _____ found a _____
Date

left monument as found lowered monument removed monument (explain)

On 09/04/2013 placed a SET A 1/2" X 5' PIPE WITH RLS NO. 17774 IN SWAMP
Date

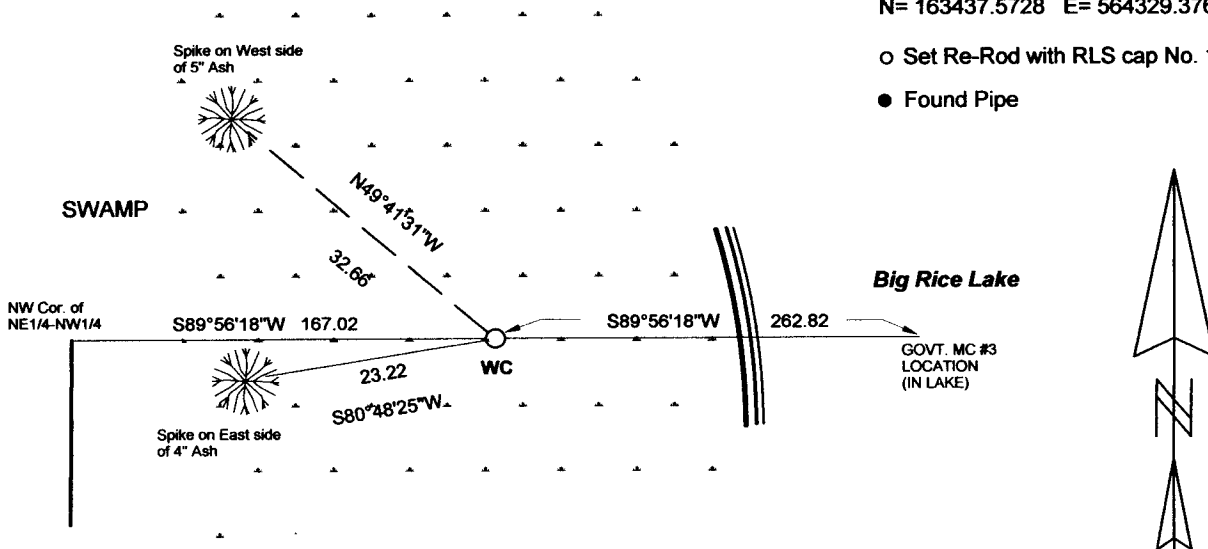
SKETCH OF REFERENCE TIES

Tie Distances are measured to the spikes.

Cass County Coordinate System (North Zone)
N= 163437.5728 E= 564329.3768

○ Set Re-Rod with RLS cap No. 17774

● Found Pipe



NOT TO SCALE

Statement of evidence relative to this corner location is on back of page.

I hereby certify that this document and the data contained herein was prepared by me or under my direct supervision.

Marvin R. Kohout 11 SEPT 2013
Marvin R. Kohout Date

Registration No, 17774

Land surveyor

OFFICE OF COUNTY RECORDER



A000597188

**OFFICE OF THE COUNTY RECORDER
CASS COUNTY, MINNESOTA
CERTIFIED, FILED, AND/OR
RECORDED ON**

10/10/2013 11:51:02 AM

AS DOC #: A000597188

PAGES: 2

REC FEES: 0.00

**KATHRYN M. NORBY
CASS COUNTY RECORDER**

BY SR Dep

**INDEX NO. A.0- 13 14.1****STATEMENT OF EVIDENCE****MEANDER CORNER NO. 3 OF SECTION 3, TOWNSHIP 140 N., RANGE 26 W., 5TH P.M.**

- 1863 DEPUTY GOVT SURVEYORS GATES A. JOHNSON AND ALONZO L. THORNTON,
IN THE ORIGINAL GOVT SURVEY, SET A POST AND MADE TIES.
REFERENCES: 3" TAM N 37 W 28 LKS 3" WILLOW N 72 E 76 LKS
- 1911 SURVEYOR JOHN CURO, LICENSE NO. 1428, HAD HIS CREW LED BY E.G.
DEC. WILLIAMS, SEARCH FOR THE GOVT POST. NO RECOVERY WAS MADE. CURO
AND BOOK 93 PG 32, 36
1912
JAN.
- 2013 SURVEYOR MARVIN R. KOHOUT, LICENSE NO. 17774, KOHOUT LAND
AUG SURVEYING, SEARCHED FOR THE GOVT POST. NO RECOVERY MADE. A
WITNESS CORNER WAS ESTABLISHED 1458.45 FEET EAST AND ON LINE
WITH THE NORTHWEST CORNER OF SECTION 3 AND THE MEANDER CORNER
LOCATION.