

CERTIFICATE OF LOCATION OF GOVERNMENT CORNER

Witness to the South Line of Section 10
Township 138 N , Range 30 W , 5th P.M.
STATE OF MINNESOTA, COUNTY OF Cass



A000597187

OFFICE OF THE COUNTY RECORDER
CASS COUNTY, MINNESOTA
CERTIFIED, FILED, AND/OR
RECORDED ON

10/10/2013 11:51:01 AM

AS DOC #: A000597187

PAGES: 2

REC FEES: 0.00

KATHRYN M. NORBY
CASS COUNTY RECORDER

BY SR Dep

Page 1 of 2 A000597187

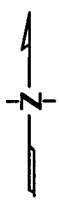
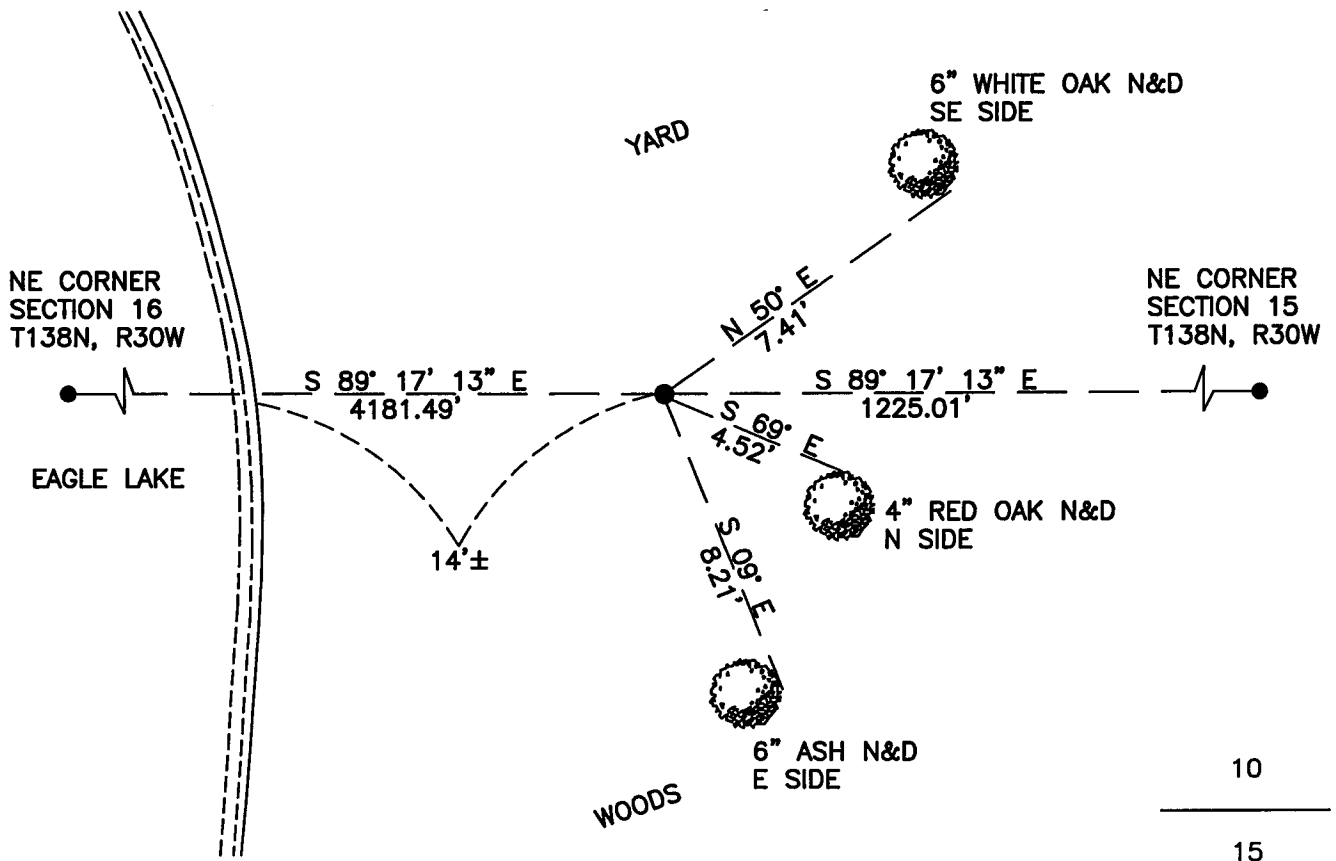
On 12/04/2012, found a(n): 1/2" Iron Pipe With Plastic Cap
Stamped "RLS 17008" Flush With Ground.

- left monument as found
- lowered monument
- removed monument (explain)
- raised monument

On _____, set a(n): _____

See "Statement of Evidence" for further details (on back)

(reserved for recording data)



"SKETCH OF REFERENCE TIES"
(not to scale - bearings are magnetic)

Ties are measured to center of monument unless otherwise noted.

UNITS = Metric English

CASS COUNTY SOUTH COORDINATES

Northing: 326147.303

Easting: 502902.406

NAD 83/2007 Adjustment.

Obtained by RTK GPS observations.

I hereby certify that this survey, plan, or report was prepared by me or under my direct supervision, and that I am a duly Licensed Land Surveyor under the laws of the State of Minnesota.

Jarrett M. Leas
signature

4-13-2013
date

Jarrett M. Leas, Minnesota License No. 42619



Statement of Evidence

Witness corner to the south line of Section 10, Township 138 North, Range 30 West, 5th Principal Meridian.

- Aug. T.B. Walker, GLO Deputy Surveyor, in the notes of the subdivision of Township 139 North, Range 30
1865 West set a post for the original M.C. corner and referenced it as follows:
4" Bl. Pine N 43° E 175 links 10" Dead Aspen S 79° W 178 links
Said records are on file at the Minnesota Historical Society, St. Paul, Minnesota, copies are filed with the
Cass County Surveyor's Office (CCSO).
- Feb. David Landecker, LS 17008, on a Certificate of Survey for Taylor Investment, on file at the CCSO,
1992 indicates a set iron pipe on the north line of Section 15 with distances of 1224.96' to the northeast corner
and 4181.93' to the northwest corner..
- Nov. A KLJ survey crew found a 1/2" Iron Pipe with a plastic cap stamped "RLS 17008" flush with ground, and
2012 is witnessed with the ties shown on the front of this certificate. Jarrett Leas, RLS #42619, after analysis
of record and survey information accepts this monument as the correct perpetuation of the corner.