

CERTIFICATE OF LOCATION OF GOVERNMENT CORNER

North Quarter Corner of Section 10
Township 138 N, Range 30 W, 5th P.M.
STATE OF MINNESOTA, COUNTY OF Cass



A000597183

**OFFICE OF THE COUNTY RECORDER
CASS COUNTY, MINNESOTA
CERTIFIED, FILED, AND/OR
RECORDED ON**

10/10/2013 11:50:57 AM

AS DOC #: A000597183

PAGES: 2

REC FEES: 0.00

**KATHRYN M. NORBY
CASS COUNTY RECORDER
BY SR _____ Dep**

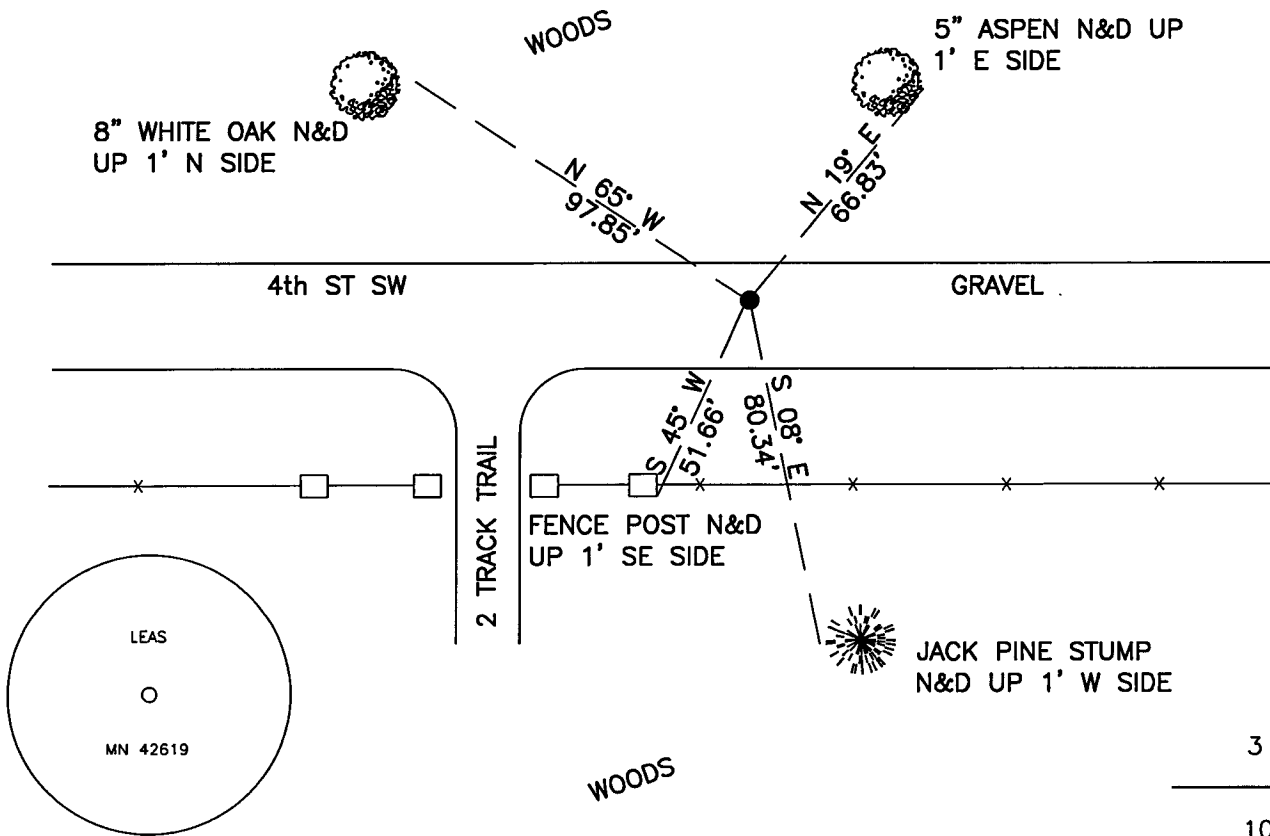
On _____, found a(n): _____
DATE

- left monument as found
- lowered monument
- removed monument (explain)
- raised monument

On 11/29/2012, set a(n): 5/8"X24" Rebar With Plastic Cap
DATE
Stamped "Leas MN 42619", 0.5' Under Surface. ± 4' North of 4th St.
SW $\text{\textcircled{C}}$.

See "Statement of Evidence" for further details (on back)

(reserved for recording data)



"SKETCH OF REFERENCE TIES" (not to scale - bearings are magnetic)

Ties are measured to center of monument unless otherwise noted.

UNITS = Metric English

CASS COUNTY SOUTH COORDINATES

Northing: 331457.202

Easting: 501531.842

NAD 83/2007 Adjustment.

Obtained by RTK GPS observations.

I hereby certify that this survey, plan, or report was prepared by me or under my direct supervision, and that I am a duly Licensed Land Surveyor under the laws of the State of Minnesota.

signature
Jarrett M. Leas, Minnesota License No. 42619

2-1-13
date



Statement of Evidence

North Quarter corner Section 10, Township 138 North, Range 30 West, 5th Principal Meridian.

Aug. 1865 G.B.Wright, GLO Deputy Surveyor, in the notes of the subdivision of Township 138 North, Range 30 West set a post for the original corner and referenced it as follows:
3" Bl. Pine S 10° E 44 Links 7" Bl. Pine N 64 3/4° E 188 Links

Said records are on file at the Minnesota Historical Society, St. Paul, Minnesota, copies are filed with the Cass County Surveyor's Office (CCSO).

June 2000 The CCSO set a telspar monument with an aluminum cap, down 0.5', 4 feet more or less, north of the centerline of 4th Street and witnessed as follows:
6" W. Oak N 65° W 97.15 feet 4" J Pine S 8° E 80.34 feet
Fence post S 45° W 51.66 feet *Distances to a double head nail

Apr. 2004 B.Grivna, LS 17253, Westwood Professional Services, Brainerd office, performed a survey in the northwest quarter of Section 10. The survey on file at the CCSO indicates the subject corner to be found.

Mar. 2005 C.Hoglund, LS 43932, Westwood Professional Services, Brainerd office, performed a survey in the northwest quarter of Section 10. The survey on file at the CCSO indicates the subject corner to be found.

Mar. 2008 C.Hoglund, LS 43932, Westwood Professional Services, Brainerd office, performed a survey in the northwest quarter of Section 10. The survey on file at the CCSO indicates the subject corner to be found.

Nov. 2012 A KLJ survey crew searched for the telspar monument set by the CCSO in 2000, but could not locate it. The monument was set obliterated off of the 2000 CCSO ties, and is witnessed with the ties shown on the front of this certificate. However, the county tie of the White Oak bearing N 65° W measuring 97.15' did not fit and now measures 97.85'. Jarrett Leas, RLS #42619, after analysis of record and survey information accepts this monument as the correct perpetuation of the corner.