

# CERTIFICATE OF LOCATION OF GOVERNMENT CORNER

Northeast Corner of Section 15

Township 138 N, Range 31 W, 5th P.M.

STATE OF MINNESOTA, COUNTY OF Cass



A000597018

OFFICE OF THE COUNTY RECORDER  
CASS COUNTY, MINNESOTA  
CERTIFIED, FILED, AND/OR  
RECORDED ON

10/3/2013 2:30:59 PM

AS DOC #: A000597018

PAGES: 2

REC FEES: 0.00

KATHRYN M. NORBY  
CASS COUNTY RECORDER

BY SR Dep

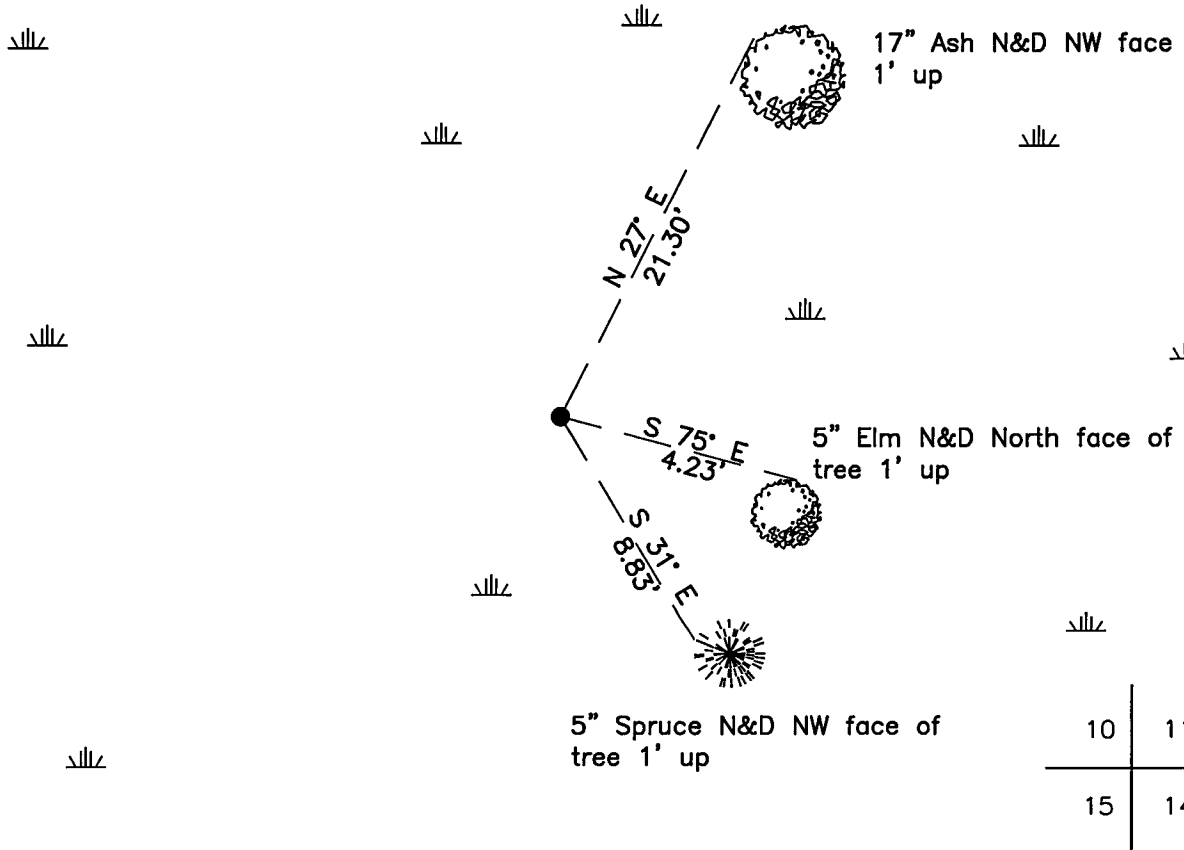
On 10/30/2012, found a(n): 2 1/4" Capped Iron Pipe up 1.5'  
in Swamp.

- left monument as found
- lowered monument
- removed monument (explain)
- raised monument

On \_\_\_\_\_, set a(n): \_\_\_\_\_

See "Statement of Evidence" for further details (on back)

(reserved for recording data)



"SKETCH OF REFERENCE TIES"  
(not to scale - bearings are magnetic)

Ties are measured to center of monument unless otherwise noted.

UNITS =  Metric  English

CASS COUNTY SOUTH COORDINATES

Northing: 326101.579

Easting: 472464.791

NAD 83/2007 Adjustment.

Obtained by RTK GPS observations.

I hereby certify that this survey, plan, or report was prepared by me or under my direct supervision, and that I am a duly Licensed Land Surveyor under the laws of the State of Minnesota.

*Jarrett M. Leas*  
signature

2-1-13  
date

Jarrett M. Leas, Minnesota License No. 42619

Page 1 of 2 A000597018



Statement of Evidence

**Northeast corner Section 15, Township 138 North, Range 31 West, 5th Principal Meridian.**

- Nov. 1870    T.B.Walker, GLO Deputy Surveyor, in the notes of the subdivision of Township 138 North, Range 31 West set a post for the original corner and referenced it as follows:  
6" Ash        N 60° E        13 links        10" Tam.        S 24° W        14 links  
4" Tam.        N 47° W        11 links        10" Elm        S 30°30' E    23 links  
Said records are on file at the Minnesota Historical Society, St. Paul, Minnesota, copies are filed with the Cass County Surveyor's Office (CCSO).
- May 1915    J.W. Curo, Cass County Surveyor, LS 1428, County Surveyor, County Resurvey, on file at the Cass County Records Office, in cabinet E, sheet 49 indicates a 2 1/4"X4' Iron Monument was set.
- Oct. 1919    John Curo, Book 26, Page 11, indicates finding an I.M. at this corner.
- Nov.. 1919    John Curo, Book 26, Page 21, indicates running a line through this corner.
- Jan. 1922    C.J.Bark, County Ditch No. 16, Book 97, Shelf 2, page 25, on file in the CCSO, indicates finding an Iron Pipe at this location.
- Oct. 2012    A KLJ survey crew found a 2 1/4" Iron Pipe, and is witnessed with the ties shown on the front of this certificate. Jarrett Leas, RLS #42619, after analysis of record and survey information accepts this monument as the correct perpetuation of the corner.