

CERTIFICATE OF LOCATION OF GOVERNMENT CORNER

East Quarter Corner of Section 5
Township 138 N, Range 31 W, 5th P.M.
STATE OF MINNESOTA, COUNTY OF Cass



A000597009

OFFICE OF THE COUNTY RECORDER
CASS COUNTY, MINNESOTA
CERTIFIED, FILED, AND/OR
RECORDED ON

10/3/2013 2:30:50 PM

AS DOC #: A000597009

PAGES: 2

REC FEES: 0.00

KATHRYN M. NORBY
CASS COUNTY RECORDER

BY SR Dep

Page 1 of 2
A000597009

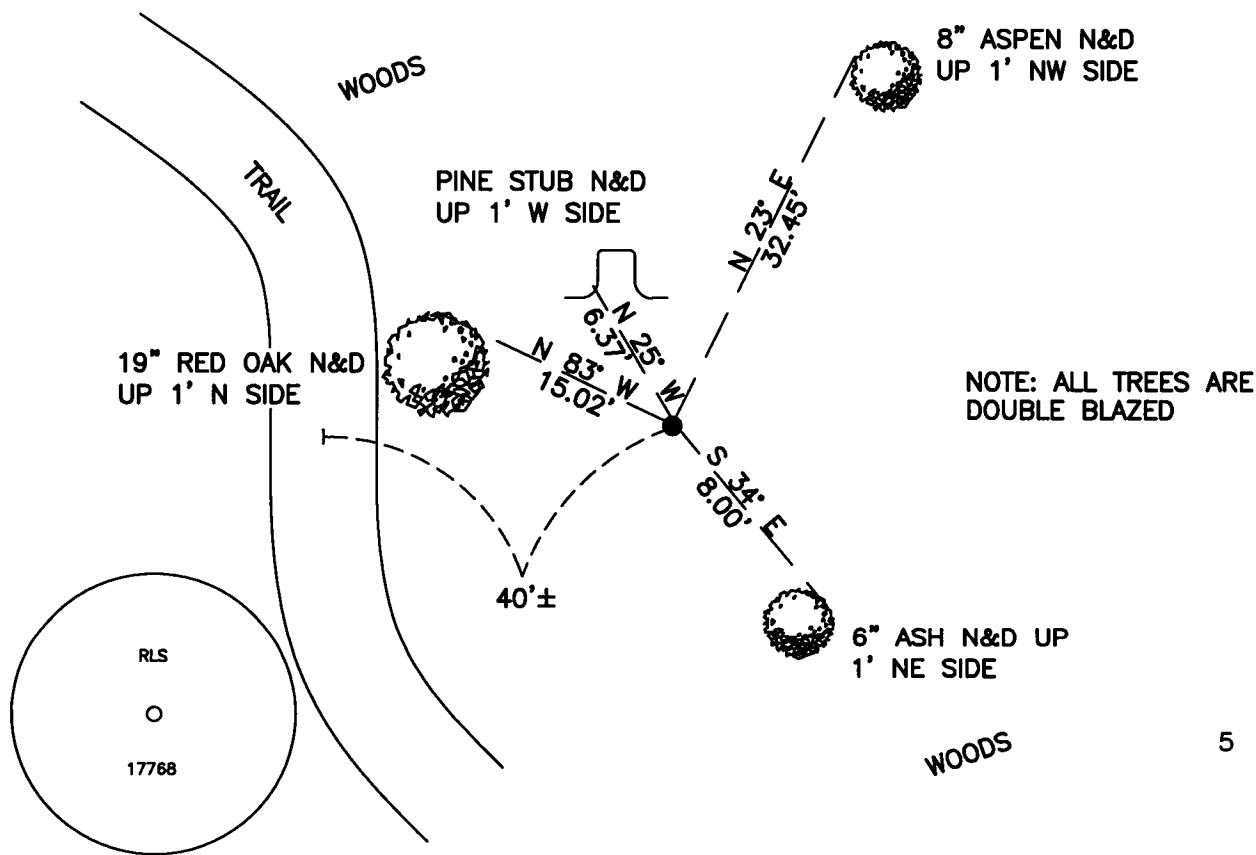
On 10/22/2012, found a(n): 1/2" Iron Pipe With Plastic Cap
Stamped "RLS 17768" Up 0.2'.

- left monument as found
- removed monument (explain)
- lowered monument
- raised monument

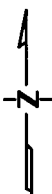
On _____, set a(n): _____
DATE

See "Statement of Evidence" for further details (on back)

(reserved for recording data)



"SKETCH OF REFERENCE TIES" (not to scale - bearings are magnetic)



Ties are measured to center of monument unless otherwise noted.

UNITS = Metric English

CASS COUNTY SOUTH COORDINATES

Northing: 333754.197

Easting: 462079.479

NAD 83/2007 Adjustment.

Obtained by RTK GPS observations.

I hereby certify that this survey, plan, or report was prepared by me or under my direct supervision, and that I am a duly Licensed Land Surveyor under the laws of the State of Minnesota.

Jarrett M. Leas
signature

4-13-2013
date

Jarrett M. Leas, Minnesota License No. 42619



Statement of Evidence

East Quarter corner of Section 5, Township 138 North, Range 31 West, 5th Principal Meridian.

- Nov. 1870 T.B.Walker, General Land Office (GLO) Deputy Surveyor set a post for the original corner and referenced it as follows:
6" Balsam West 10 links (6.6 feet) 6" Bl.Pine S 70° E 6 links (4.0 feet)
Said records are on file at the Minnesota Historical Society, St. Paul, Minnesota, copies are filed with the Cass County Surveyor's Office (CCSO).
- Aug. 2005 B.Hippen, technician, CCSO, notes on file in the CCSO, found remains of a downed Pine, and set a 60d spike and washer at the base.
- Oct. 2012 A KLJ survey crew found a 1/2" Iron Pipe stamped "RLS 17768". KLJ contacted Bruce Skipton to inquire about his monument and the evidence at the time of being set. Mr. Skipton informed KLJ that he was no longer an employee of the firm that was responsible for setting the monument and did not have access to the records, but he did have a clear recollection of the corner. Mr. Skipton stated that a thorough search was made for the corner or accessories, but nothing ever found. The corner position was computed as a lost-single proportion position, using the Northeast Corner of Section 5 and the Northeast Corner of Section 8 as controlling corners. The found corner monument is witnessed with the ties shown on the front of this certificate. Jarrett Leas, RLS #42619, after analysis of record and survey information accepts this monument as the correct perpetuation of the corner.