

# CERTIFICATE OF LOCATION OF GOVERNMENT CORNER

East Quarter Corner of Section 22  
Township 139 N , Range 26 W , 5th P.M.  
STATE OF MINNESOTA, COUNTY OF Cass



A000596803

OFFICE OF THE COUNTY RECORDER  
CASS COUNTY, MINNESOTA  
CERTIFIED, FILED, AND/OR  
RECORDED ON

9/26/2013 2:30:53 PM

AS DOC #: A000596803

PAGES: 2

REC FEES: 0.00

KATHRYN M. NORBY  
CASS COUNTY RECORDER

BY SR Dep

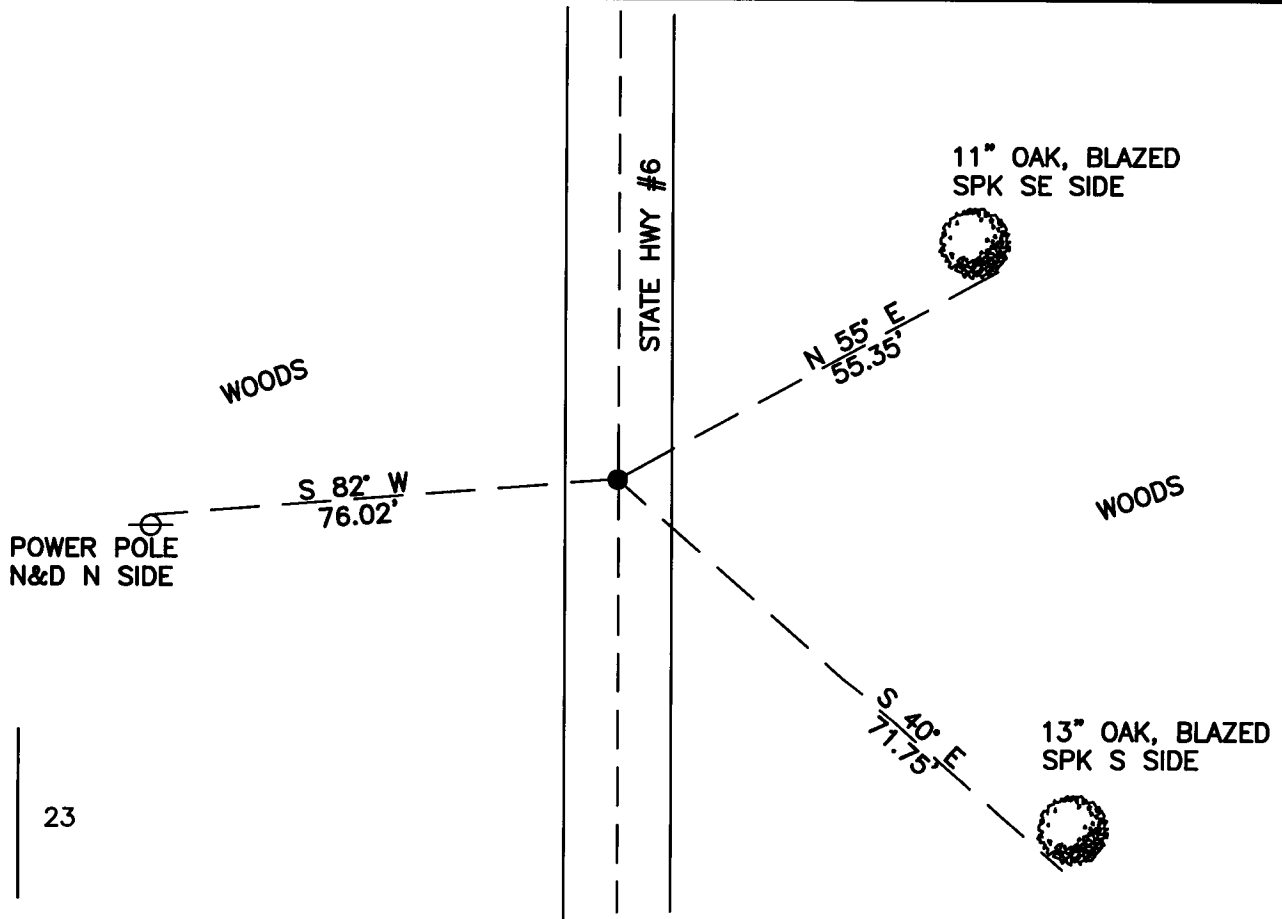
On \_\_\_\_\_, found a(n): \_\_\_\_\_  
DATE

- left monument as found
- lowered monument
- removed monument (explain)
- raised monument

On 2/12/2013, set a(n): Cotton Gin Spike Flush With Bituminous Surface on  $\phi$  of State Highway #6.  
DATE

See "Statement of Evidence" for further details (on back)

(reserved for recording data)



### "SKETCH OF REFERENCE TIES" (not to scale - bearings are magnetic)

Ties are measured to center of monument unless otherwise noted.

UNITS =  Metric  English

### CASS COUNTY SOUTH COORDINATES

Northing: 349610.769

Easting: 630866.584

NAD 83/2007 Adjustment.  
Obtained by RTK GPS observations.

I hereby certify that this survey, plan, or report was prepared by me or under my direct supervision, and that I am a duly Licensed Land Surveyor under the laws of the State of Minnesota.

signature  
Jarrett M. Leas, Minnesota License No. 42619

4-30-2013  
date

Page 1 of 2 A000596803

