

CERTIFICATE OF LOCATION OF GOVERNMENT CORNER

Northeast Corner of Section 34
Township 138 N . Range 32 W . 5th P.M.
STATE OF MINNESOTA. COUNTY OF CASS.



A000596607

OFFICE OF THE COUNTY RECORDER
CASS COUNTY, MINNESOTA
CERTIFIED, FILED, AND/OR
RECORDED ON

9/20/2013 9:22:59 AM

AS DOC #: A000596607

PAGES: 2

REC FEES: 0.00

KATHRYN M. NORBY
CASS COUNTY RECORDER

BY SR _____ Dep

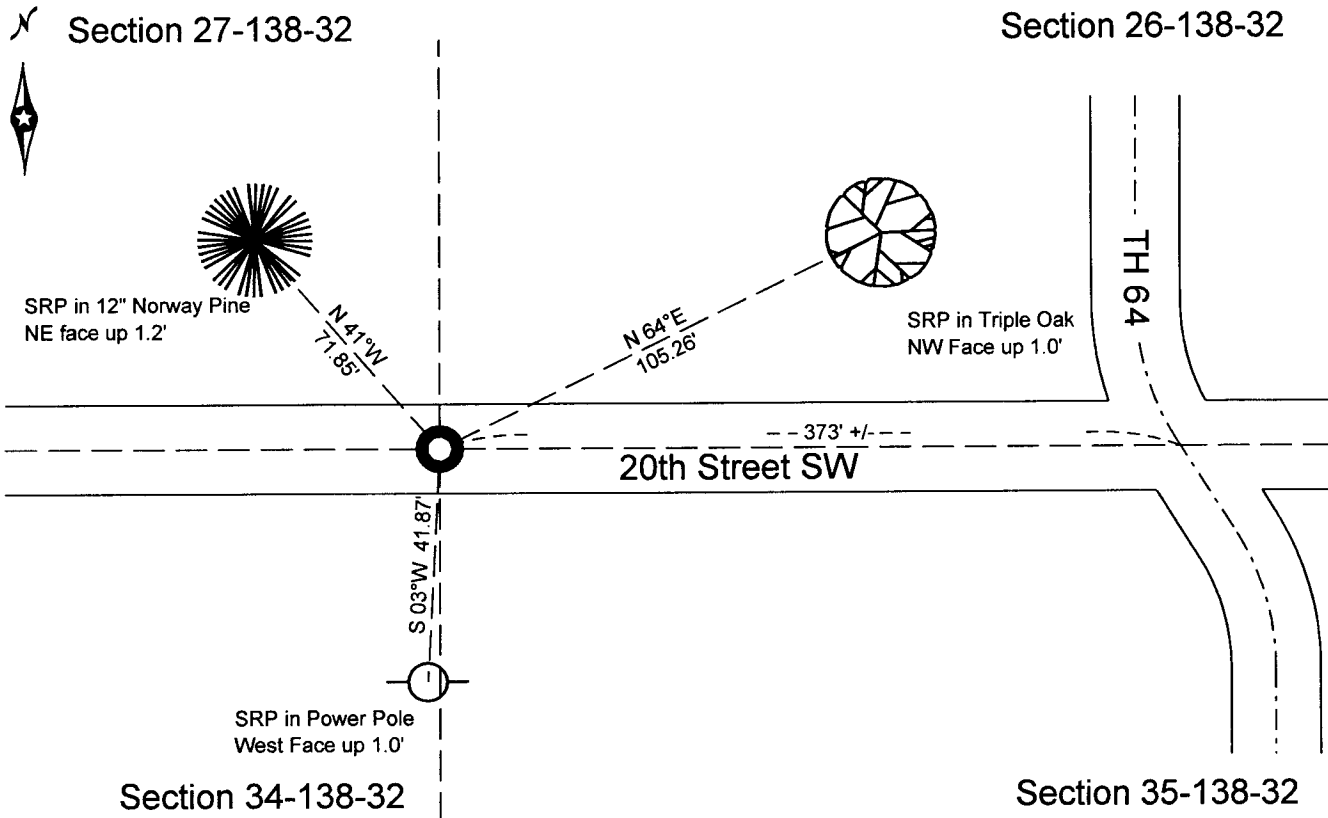
On 5/12/2010 . found a(n): Minnesota Highway Department Cast Iron Monument down 0.3' on centerline of gravel road.

- left monument as found
- lowered monument
- removed monument (explain)
- raised monument

On _____ . set a(n): _____

See "Statement of Evidence" for further details (on back)

(reserved for recording data)



"SKETCH OF REFERENCE TIES" (not to scale - bearings are magnetic)

Ties are measured to center of monument unless otherwise noted.

UNITS = Metric English

CASS COUNTY COORDINATES. SOUTH ZONE

Northing: 309700.196

Easting: 440872.789

NAD 83. HARN 1996 Adjustment.

Obtained by RTK GPS observations.

I hereby certify that this document and the data contained herein was prepared by me or under my direct supervision, and that I am a duly Licensed Land Surveyor under the laws of the State of Minnesota

signature

7-11-2013

date

James Kramer, Minnesota License No. 23668

Page 1 of 2 A000596607



Index No. 13832V.0-17.0

Statement of Evidence

Northeast Corner of Section 34, Township 138 North, Range 32 West, 5th Principal Meridian.

- 1870 Wood Post set to mark the corner, referenced as follows:
 16" Norway Pine S 13 deg. W 33 links (21.78 feet)
 13" Norway Pine S 32 deg. E 81 links (53.46 feet)
 14" Norway Pine N 62-1/2 deg. E 28 links (18.48 feet)
 4" Aspen N 32 deg. W 14 links (9.24 feet)
 *Said records are on file with the Secretary of State, St Paul, Minnesota, copies are filed
 With the Cass County Surveyor's Office (CCSO).*

- 1910 Harry Todd recovered 16" Norway Pine Stump, and set 8x8x36 concrete post. County
 Survey Record Book A, pg 108-109.

- 1919 E.B. Horst recovered concrete post. (Curo Survey Book 158, p. 51 in CCSO)
 Survey Record Book C pg 159
 Survey Record Book C pg 402

- 2001 MnDot survey crew recovered concrete post, and set cast iron monument over top,
 referenced as follows:
 Triple Oak NE 105.26 feet
 Power Pole SW 41.87 feet
 Norway Pine NW 71.85 feet

- 2003 Bruce Grivna, RLS 17253, indicates a cast iron monument found on filed Certificate of
 Survey.

- 2010 Jarrett Leas, RLS 42619, recovered a cast iron monument, referenced as follows:
 Triple Oak N 64 deg. E 105.26 feet
 Power Pole S 3 deg. W 41.87 feet
 12" Norway Pine N 41 deg. W 71.85 feet

The monument recovered, and established references for the position are shown on the face of this document.

Analysis of the recovered data, field evidence and survey measurements, indicate that the monument recovered by Jarrett Leas in 2010 is the correct perpetuation of this corner.