

CERTIFICATE OF LOCATION OF GOVERNMENT CORNER

Northeast Corner of Section 11

Township 139 N, Range 25 W, 5th P.M.

STATE OF MINNESOTA, COUNTY OF Cass



A000596388

OFFICE OF THE COUNTY RECORDER
CASS COUNTY, MINNESOTA
CERTIFIED, FILED, AND/OR
RECORDED ON

9/13/2013 10:35:28 AM

AS DOC #: A000596388

PAGES: 2

REC FEES: 0.00

KATHRYN M. NORBY
CASS COUNTY RECORDER

BY SR Dep

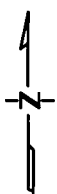
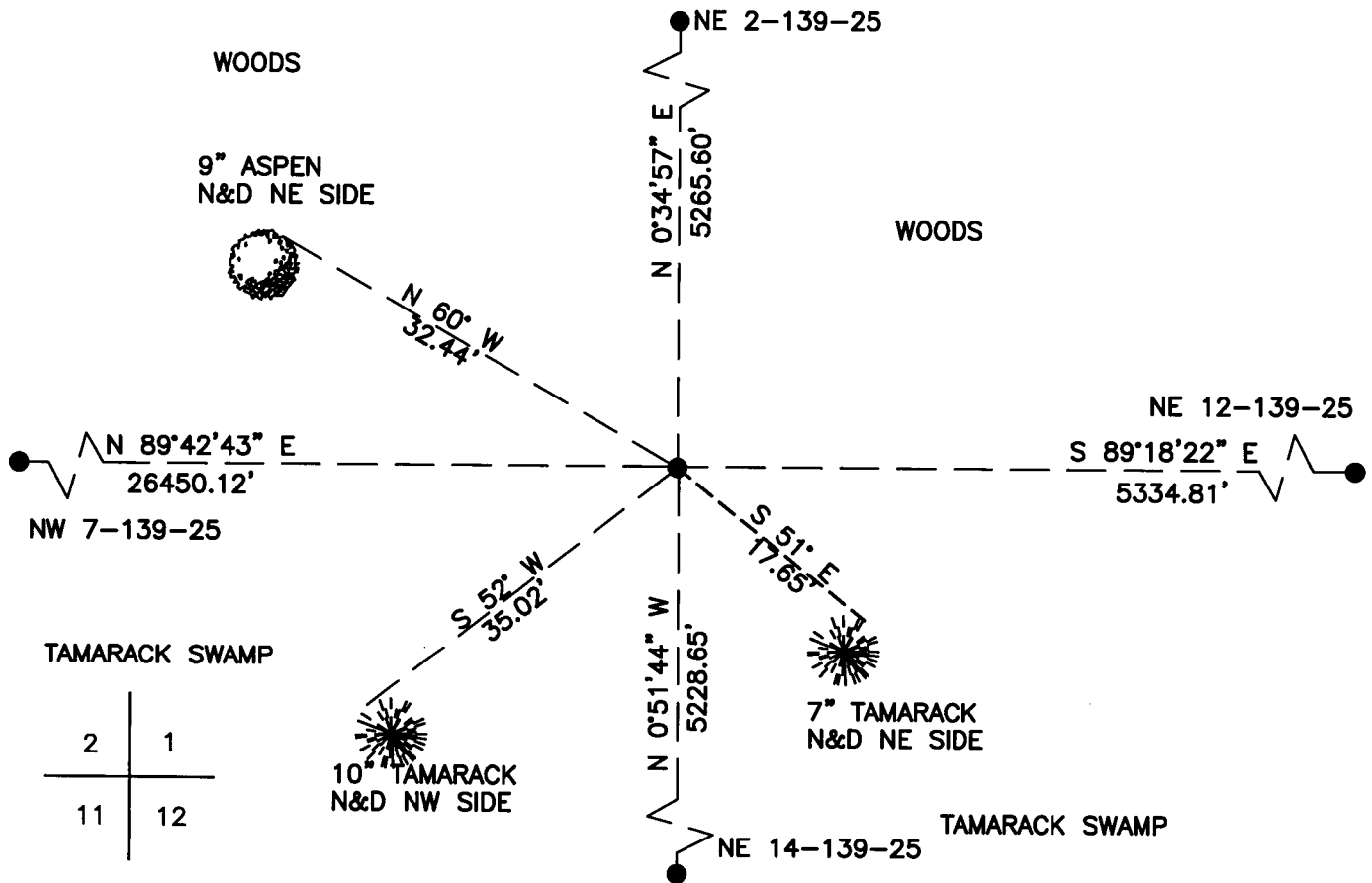
On _____, found a(n): _____
DATE

- left monument as found
- lowered monument
- removed monument (explain)
- raised monument

On 4/10/2013, set a(n): 5/8" X 48" Rebar with Plastic
Cap Stamped "Leas MN 42619" up 1.0'.

See "Statement of Evidence" for further details (on back)

(reserved for recording data)



"SKETCH OF REFERENCE TIES"
(not to scale - bearings are magnetic)

Ties are measured to center of monument unless otherwise noted.

UNITS = Metric English

CASS COUNTY SOUTH COORDINATES

Northing: 362912.225

Easting: 667594.791

NAD 83/2007 Adjustment.

Obtained by RTK GPS observations.

I hereby certify that this survey, plan, or report was prepared by me or under my direct supervision, and that I am a duly Licensed Land Surveyor under the laws of the State of Minnesota.

Jarrett M. Leas
signature
Jarrett M. Leas, Minnesota License No. 42619

5-31-13
date



Statement of Evidence

Northeast corner of Section 11, Township 139 North, Range 25 West, 5th Principal Meridian.

- 1863 The US General Land Office, in notes of the subdivision of Township 139 North, Range 25 West, set a post for the original corner and referenced it as follows:
 8" Spruce N 70° E 17 links 6" Spruce N 40° W 28 links
 6" Spruce S 35° E 30 links 6" Spruce S 55° W 12 links
 Said records are on file with the Minnesota Historical Society, St. Paul, Minnesota, copies are filed with the Cass County Surveyor's Office (CCSO).
- 1916 John Greene, Survey Record no. 347, Book B, page 530, on file in the CCSO, indicates finding the corner as well as one bearing tree. New bearing trees were made as follows:
 8" Tamarack S 35° E 47.5 feet 6" Spruce S 50° W 64.2 feet
- 1926 Ben Clark, LS 231, Curo book 170A, page 134, on file in the CCSO, indicates finding a wooden post 4' long 4" square and an old witness stump marked B.T.
- 1936 The CCC Washburn Lake field book 3, page 11, on file at the DNR office in Brainerd, indicates a scribed square stake was found 38 chains 17 feet north from the ¼ corner. The following bearing trees were noted:
 6" Tamarack S 49° E 48 feet 4" Tamarack N 77° W 21 links
- 1937 The CCC Washburn Lake field book 3, page 11, on file at the DNR office in Brainerd, indicates at 5307' from the east, and 51' south a 4" Tamarack post with scribing was recovered. A 4" stake 5' high was placed along with the found stake, the following ties were also noted:
 Tam. stump S 64° W 64 feet 12" Tamarack stump SSE 8 feet
- 2013 KLJ field crews searched the area and find no evidence of the corner or accessories. This corner was set lost by proportioning between the NE 2, NE 12, NE 14, and the NW 7. A 5/8"x48" rebar with plastic cap stamped "Leas MN 42619" was set to mark the corner position and is witnessed with the ties shown on the front of this certificate. Jarrett Leas, RLS #42619, after analysis of record and survey information accepts this monument as the correct perpetuation of the corner.