

CERTIFICATE OF LOCATION OF GOVERNMENT CORNER

Northeast Corner of Section 9
Township 139 N, Range 25 W, 5th P.M.
STATE OF MINNESOTA, COUNTY OF Cass



A000596387

OFFICE OF THE COUNTY RECORDER
CASS COUNTY, MINNESOTA
CERTIFIED, FILED, AND/OR
RECORDED ON

9/13/2013 10:35:27 AM

AS DOC #: A000596387
PAGES: 2
REC FEES: 0.00

KATHRYN M. NORBY
CASS COUNTY RECORDER
BY SR Dep

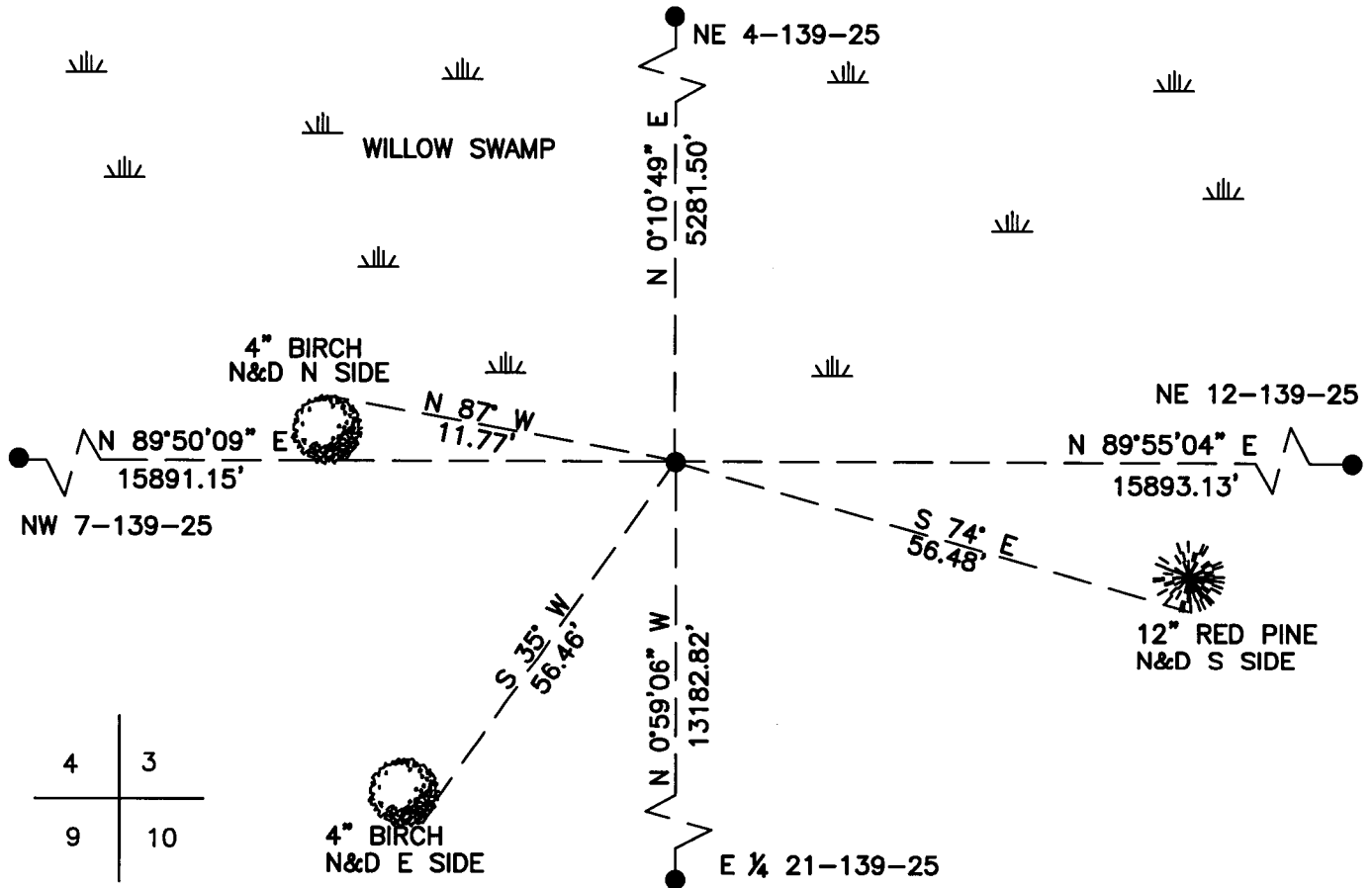
On _____, found a(n): _____
DATE

- left monument as found
- lowered monument
- removed monument (explain)
- raised monument

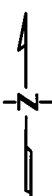
On 4/09/2013, set a(n): 5/8" X 48" Rebar with Plastic
DATE
Cap Stamped "Leas MN 42619" up 1.0'

See "Statement of Evidence" for further details (on back)

(reserved for recording data)



4	3
9	10



"SKETCH OF REFERENCE TIES"
(not to scale - bearings are magnetic)

Ties are measured to center of monument
unless otherwise noted.

UNITS = Metric English

CASS COUNTY SOUTH COORDINATES

Northing: 362824.817

Easting: 657036.087

NAD 83/2007 Adjustment.

Obtained by RTK GPS observations.

I hereby certify that this survey, plan, or report was prepared by me or under my direct supervision, and that I am a duly Licensed Land Surveyor under the laws of the State of Minnesota.

signature
Jarrett M. Leas, Minnesota License No. 42619

5-31-13
date

Page 1 of 2 A000596387



Statement of Evidence

Northeast corner of Section 9, Township 139 North, Range 25 West, 5th Principal Meridian.

- 1863 The US General Land Office, in notes of the subdivision of Township 139 North, Range 25 West, set a post for the original corner and referenced it as follows:
- | | | | | | |
|-----------|---------|----------|-------------|---------|----------|
| 6" Fir | N 55° E | 14 links | 10" Aspen | S 58° E | 4 links |
| 11" Aspen | S 70° W | 5 links | 14" W. Pine | N 38° W | 36 links |
- Said records are on file with the Minnesota Historical Society, St. Paul, Minnesota, copies are filed with the Cass County Surveyor's Office (CCSO).
- 1937 The CCC Washburn Lake field book 2, page 49, on file at the DNR office in Brainerd, indicates a 4" Aspen post was set at 5280' from the east as an approximate corner.
- 2013 KLJ field crews searched the area and find no evidence of the corner or accessories. This corner was set lost by proportioning between the NE 4, NE 12, E1/4 21, and the NW 7. A 5/8"x48" rebar with plastic cap stamped "Leas MN 42619" was set to mark the corner position in a swamp and is witnessed with the ties shown on the front of this certificate. Jarrett Leas, RLS #42619, after analysis of record and survey information accepts this monument as the correct perpetuation of the corner.