



A000596386

OFFICE OF THE COUNTY RECORDER
CASS COUNTY, MINNESOTA
CERTIFIED, FILED, AND/OR
RECORDED ON

9/13/2013 10:35:26 AM

AS DOC #: A000596386

PAGES: 2

REC FEES: 0.00

KATHRYN M. NORBY
CASS COUNTY RECORDER

BY SR Dep

CERTIFICATE OF LOCATION OF GOVERNMENT CORNER

North Quarter Corner of Section 9

Township 139 N, Range 25 W, 5th P.M.

STATE OF MINNESOTA, COUNTY OF Cass

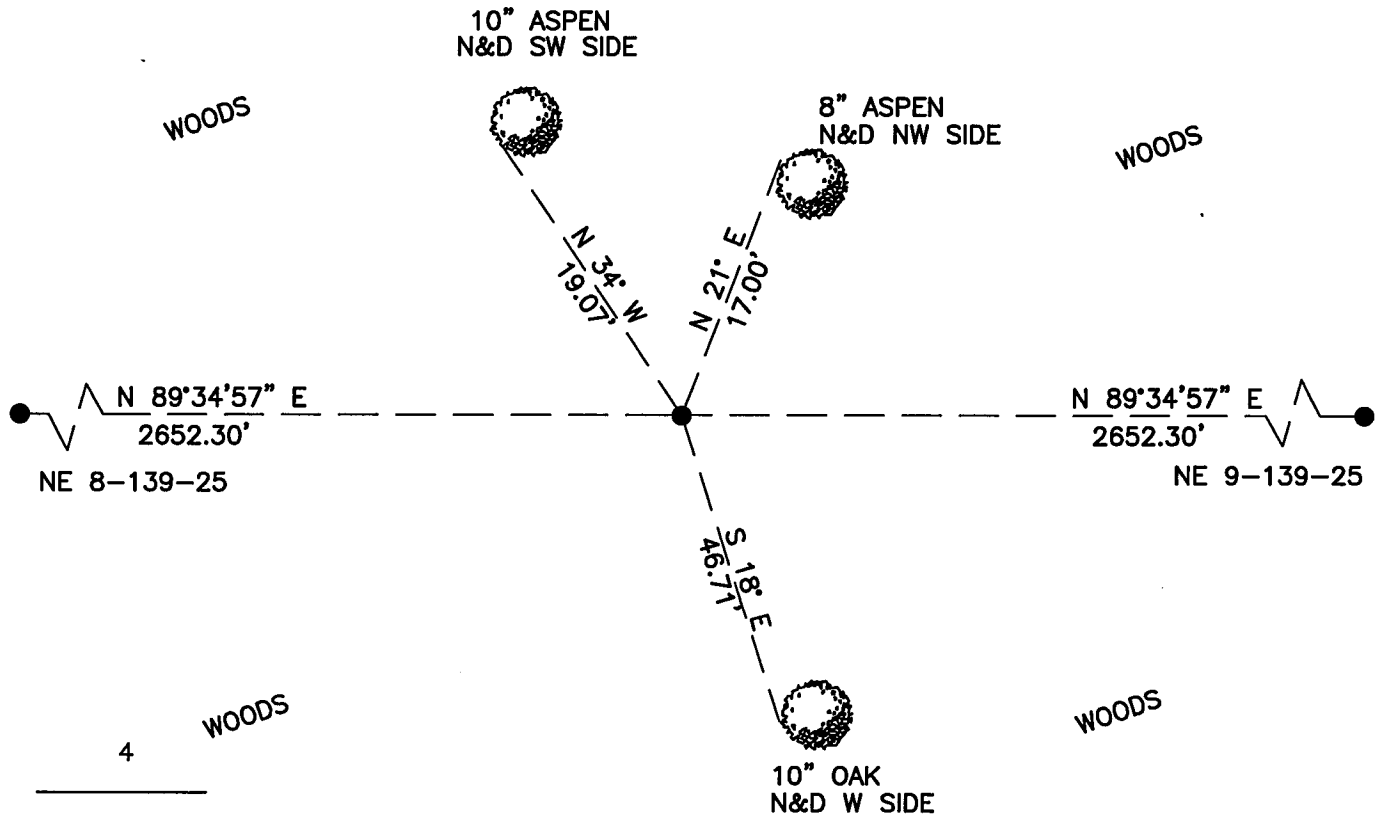
On _____, found a(n): _____
DATE

- left monument as found
- removed monument (explain)
- lowered monument
- raised monument

On 4/09/2013, set a(n): 5/8" X 24" Rebar with Plastic
DATE
Cap Stamped "Leas MN 42619" up 0.5'

See "Statement of Evidence" for further details (on back)

(reserved for recording data)



"SKETCH OF REFERENCE TIES"

(not to scale - bearings are magnetic)

Ties are measured to center of monument unless otherwise noted.

UNITS = Metric English

CASS COUNTY SOUTH COORDINATES

Northing: 362805.488

Easting: 654383.851

NAD 83/2007 Adjustment.

Obtained by RTK GPS observations.

I hereby certify that this survey, plan, or report was prepared by me or under my direct supervision, and that I am a duly Licensed Land Surveyor under the laws of the State of Minnesota.

signature

5-31-13
date

Jarrett M. Leas, Minnesota License No. 42619

Page 1 of 2
A000596386



Statement of Evidence

North Quarter corner of Section 9, Township 139 North, Range 25 West, 5th Principal Meridian.

- 1863 The US General Land Office, in notes of the subdivision of Township 139 North, Range 25 West, set a post for the original corner and referenced it as follows:
5" S. Maple N 30° E 10 links 40" W. Pine S 50° W 64 links
Said records are on file with the Minnesota Historical Society, St. Paul, Minnesota, copies are filed with the Cass County Surveyor's Office (CCSO).
- 1937 The CCC Washburn Lake field book 2, page 50, on file at the DNR office in Brainerd, indicates a 3" Aspen post was set at 2640' from the east as an approximate corner.
- 2013 KLJ field crews searched the area and find no evidence of the corner or accessories. This corner was set lost by proportioning between the NE 8 and the NE 9. A 5/8" x 24" rebar with plastic cap stamped "Leas MN 42619" was set to mark the corner position and is witnessed with the ties shown on the front of this certificate. Jarrett Leas, RLS #42619, after analysis of record and survey information accepts this monument as the correct perpetuation of the corner.