

# CERTIFICATE OF LOCATION OF GOVERNMENT CORNER

Northeast Corner of Section 27  
Township 139 N , Range 27 W , 5th P.M.  
STATE OF MINNESOTA, COUNTY OF Cass



**A000595711**

OFFICE OF THE COUNTY RECORDER  
CASS COUNTY, MINNESOTA  
CERTIFIED, FILED, AND/OR  
RECORDED ON

8/22/2013 9:17:44 AM

AS DOC #: A000595711

PAGES: 2

REC FEES: 0.00

**KATHRYN M. NORBY**  
CASS COUNTY RECORDER

BY KF Dep

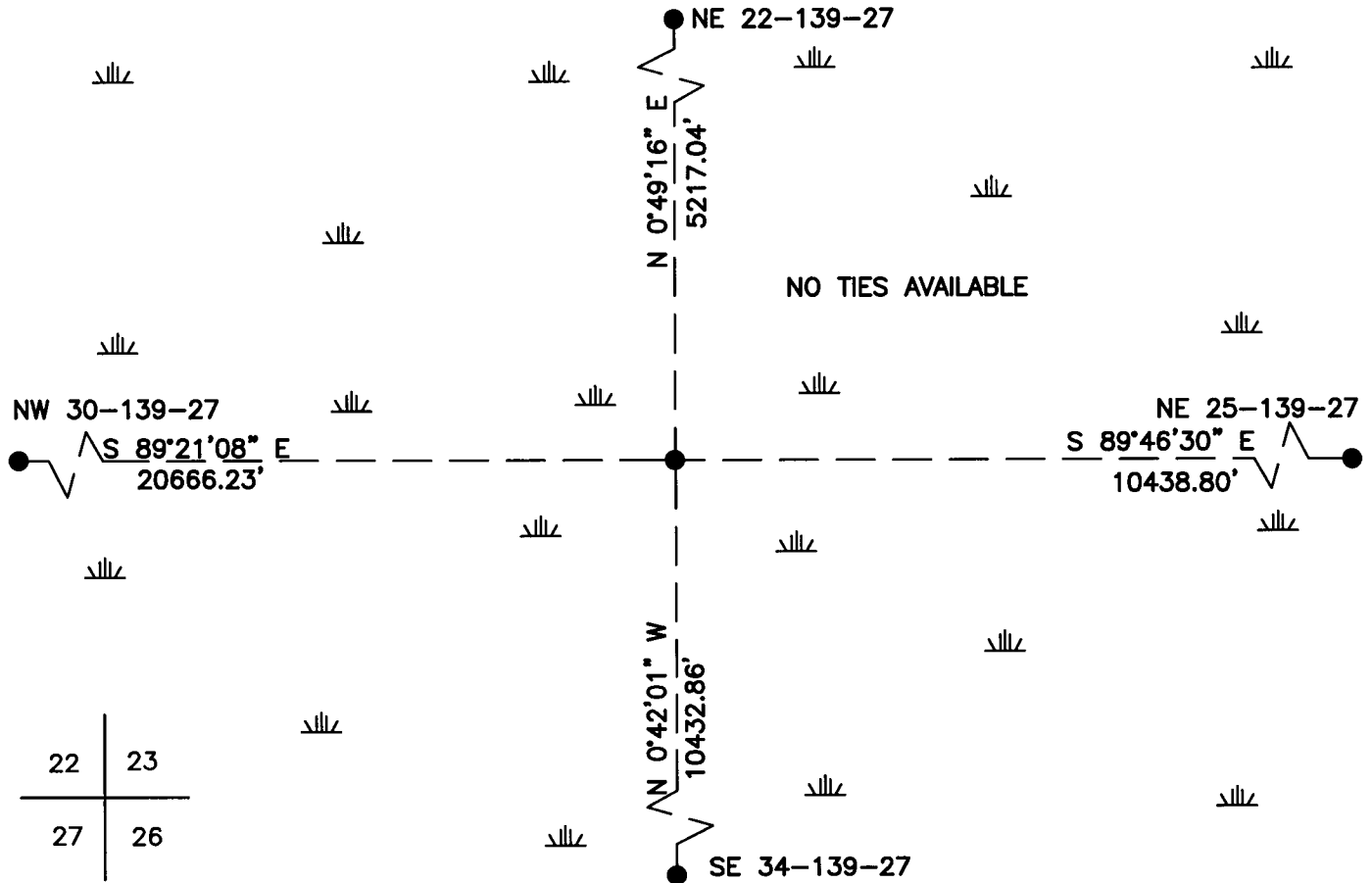
On \_\_\_\_\_, found a(n): \_\_\_\_\_  
DATE

- left monument as found
- lowered monument
- removed monument (explain)
- raised monument

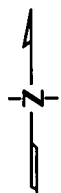
On 2/27/2013, set a(n): 5/8"x48" Rebar With Plastic Cap  
DATE  
Stamped "Leas MN 42619" up 1.0' in Swamp.

See "Statement of Evidence" for further details (on back)

(reserved for recording data)



### "SKETCH OF REFERENCE TIES" (not to scale - bearings are magnetic)



Ties are measured to center of monument unless otherwise noted.

UNITS =  Metric  English

### CASS COUNTY SOUTH COORDINATES

Northing: 346832.172

Easting: 598900.172

NAD 83/2007 Adjustment.

Obtained by RTK GPS observations.

I hereby certify that this survey, plan, or report was prepared by me or under my direct supervision, and that I am a duly Licensed Land Surveyor under the laws of the State of Minnesota.

signature

4-30-2013  
date

Jarrett M. Leas, Minnesota License No. 42619

Page 1 of 2 A000595711



Statement of Evidence

**Northeast corner of Section 27, Township 139 North, Range 27 West, 5th Principal Meridian.**

- 1864    The US General Land Office, in notes of the subdivision of Township 139 North, Range 27 West, set a post for the original corner and referenced it as follows:
- |             |         |         |              |         |          |
|-------------|---------|---------|--------------|---------|----------|
| 8" Spruce   | N 43° E | 6 links | 12" Tamarack | S 45° E | 22 links |
| 9" Tamarack | S 30° W | 8 links | 10" Tamarack | N 43° W | 7 links  |
- Said records are on file with the Minnesota Historical Society, St. Paul, Minnesota, copies are filed with the Cass County Surveyor's Office (CCSO).
- 1937    CCC Washburn Lake field book no. 1, page 21, on file at the DNR office in Brainerd show CCC personnel found the corner 78.45 chains from the south.
- 2013    KLJ field crews searched the area and found nothing. This corner was set lost by double proportion between the NE 22, NE 25, SE 34, and the NW 30. A 5/8" x 48" rebar with plastic cap stamped "Leas MN 42619" was set to mark the corner position and is witnessed with the ties shown on the front of this certificate. Jarrett Leas, RLS #42619, after analysis of record and survey information accepts this monument as the correct perpetuation of the corner.