

CERTIFICATE OF LOCATION OF GOVERNMENT CORNER

Northeast Corner of Section 29
 Township 139 N, Range 27 W, 5th P.M.
 STATE OF MINNESOTA, COUNTY OF Cass



A000595707

OFFICE OF THE COUNTY RECORDER
 CASS COUNTY, MINNESOTA
 CERTIFIED, FILED, AND/OR
 RECORDED ON

8/22/2013 9:17:40 AM

AS DOC #: A000595707
 PAGES: 2
 REC FEES: 0.00

KATHRYN M. NORBY
 CASS COUNTY RECORDER

BY KF Dep

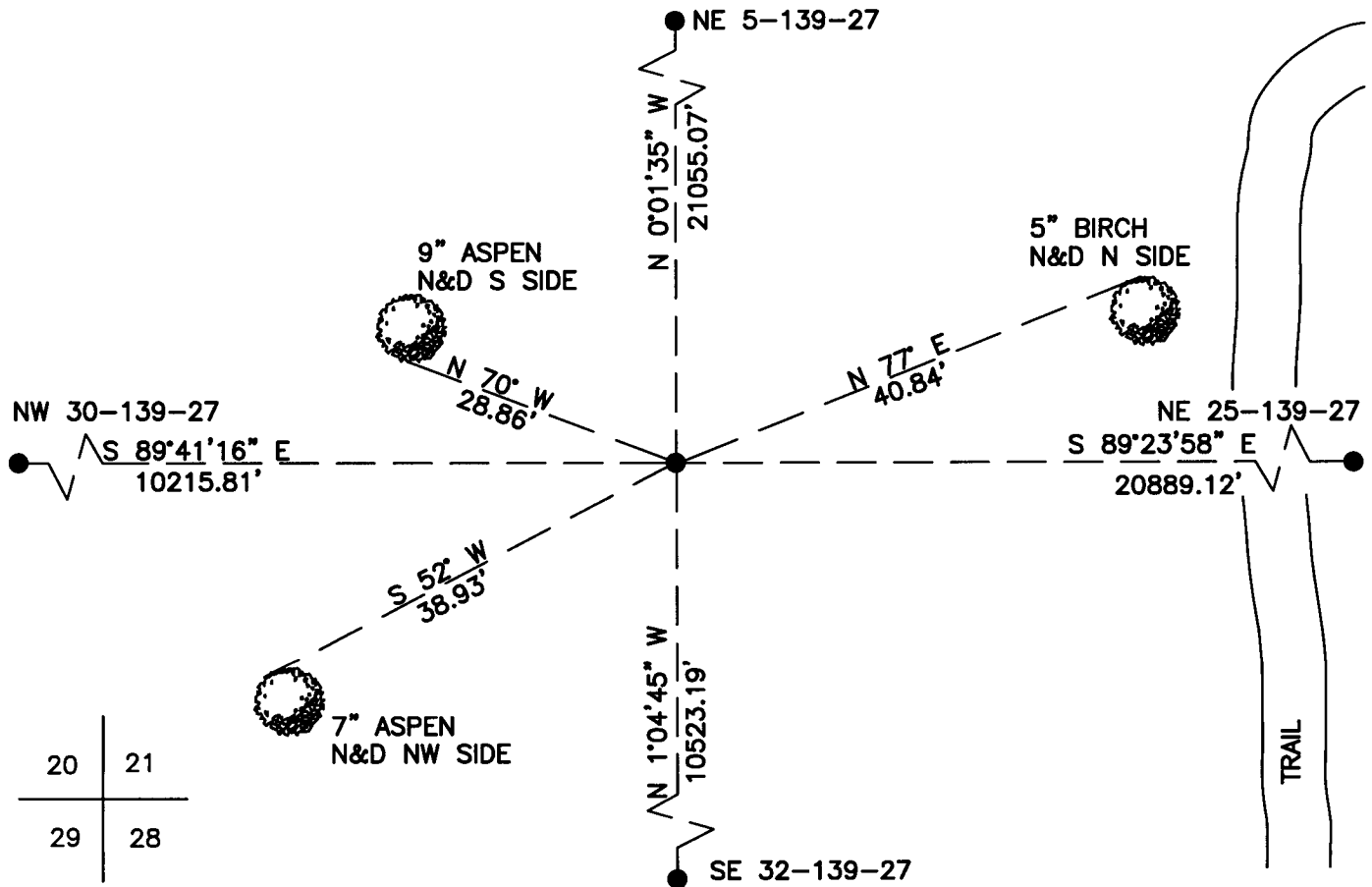
On _____, found a(n): _____
DATE

- left monument as found lowered monument
 removed monument (explain) raised monument

On 2/28/2013, set a(n): 5/8"x24" Rebar With Plastic Cap
DATE
 Stamped "Leas MN 42619" up 0.4', and 62'± Westerly of Trail ☐.

See "Statement of Evidence" for further details (on back)

(reserved for recording data)



"SKETCH OF REFERENCE TIES"
 (not to scale - bearings are magnetic)

Ties are measured to center of monument unless otherwise noted.

UNITS = Metric English

CASS COUNTY SOUTH COORDINATES

Northing: 347010.123
 Easting: 588450.923

NAD 83/2007 Adjustment.
 Obtained by RTK GPS observations.

I hereby certify that this survey, plan, or report was prepared by me or under my direct supervision, and that I am a duly Licensed Land Surveyor under the laws of the State of Minnesota.

Jarrett M. Leas
 signature

4-30-2013
 date

Jarrett M. Leas, Minnesota License No. 42619

Page 1 of 2 A000595707



Statement of Evidence

Northeast corner of Section 29, Township 139 North, Range 27 West, 5th Principal Meridian.

1864 The US General Land Office, in notes of the subdivision of Township 139 North, Range 27 West, set a post for the original corner and referenced it as follows:

| | | | | | |
|----------------|---------|----------|---------------|---------|----------|
| 10" Rock Maple | N 50° E | 35 links | 9" Rock Maple | N 35° W | 45 links |
| 6" Rock Maple | S 40° E | 19 links | 7" Rock Maple | S 70° W | 34 links |

Said records are on file with the Minnesota Historical Society, St. Paul, Minnesota, copies are filed with the Cass County Surveyor's Office (CCSO).

1937 Washburn Lake field book 1, page 27, on file at the DNR office in Brainerd show CCC personnel found the corner 77.07 chains from the south.

2013 KLJ field crews searched the area and found nothing. This corner was set lost by double proportion between the NE 5, NE 25, SE 32, and the NW 30. A 5/8" x 24" rebar with plastic cap stamped "Leas MN 42619" was set to mark the corner position and is witnessed with the ties shown on the front of this certificate. Jarrett Leas, RLS #42619, after analysis of record and survey information accepts this monument as the correct perpetuation of the corner.