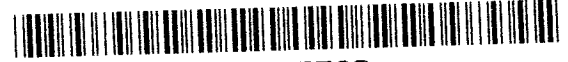


# CERTIFICATE OF LOCATION OF GOVERNMENT CORNER

East Quarter Corner of Section 22  
 Township 139 N, Range 27 W, 5th P.M.  
 STATE OF MINNESOTA, COUNTY OF Cass



**A000595702**

OFFICE OF THE COUNTY RECORDER  
 CASS COUNTY, MINNESOTA  
 CERTIFIED, FILED, AND/OR  
 RECORDED ON

8/22/2013 9:17:35 AM

AS DOC #: A000595702

PAGES: 2

REC FEES: 0.00

KATHRYN M. NORBY  
 CASS COUNTY RECORDER

BY KF Dep

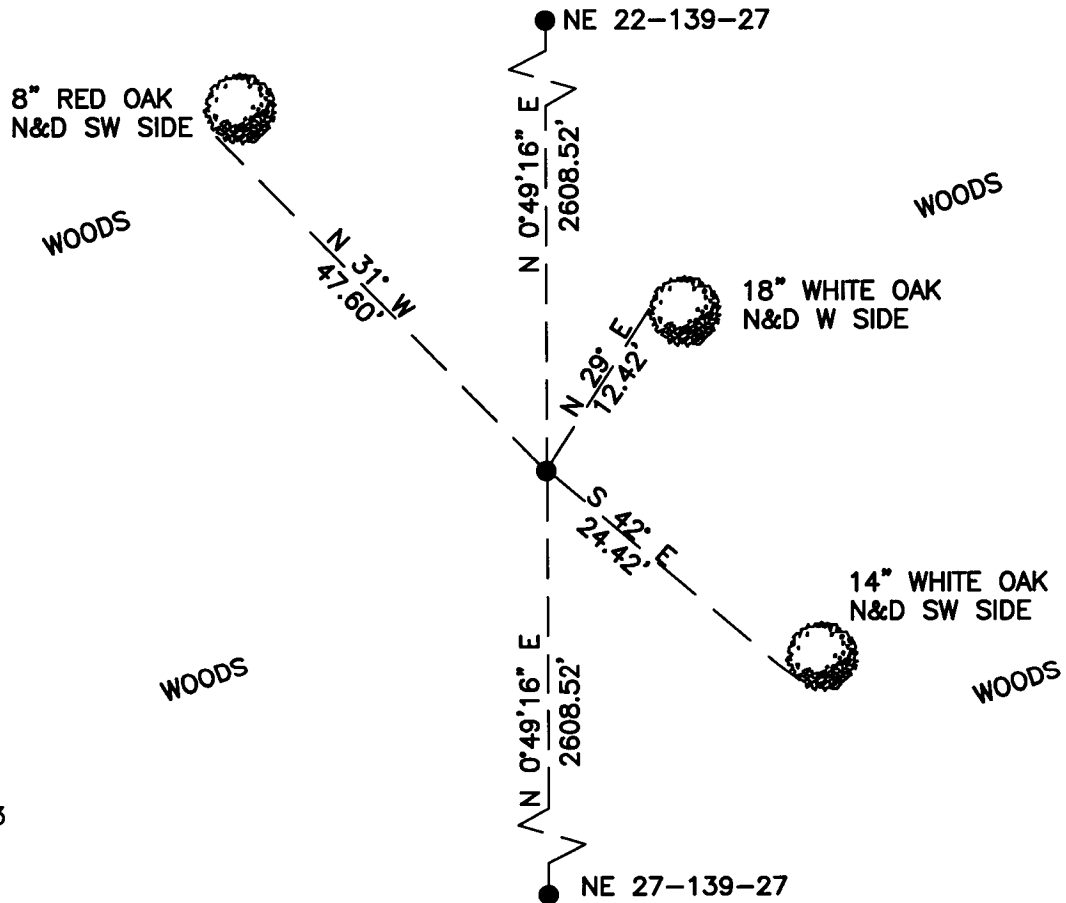
On \_\_\_\_\_, found a(n): \_\_\_\_\_  
DATE

- left monument as found       lowered monument  
 removed monument (explain)       raised monument

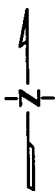
On 1/30/2013, set a(n): 5/8"x24" Rebar With Plastic Cap  
DATE  
 Stamped "Leas MN 42619" up 0.5'.

See "Statement of Evidence" for further details (on back)

(reserved for recording data)



22 | 23



"SKETCH OF REFERENCE TIES"  
 (not to scale - bearings are magnetic)

Ties are measured to center of monument unless otherwise noted.

UNITS =  Metric  English

CASS COUNTY SOUTH COORDINATES

Northing: 349440.425  
 Easting: 598937.554

NAD 83/2007 Adjustment.  
 Obtained by RTK GPS observations.

I hereby certify that this survey, plan, or report was prepared by me or under my direct supervision, and that I am a duly Licensed Land Surveyor under the laws of the State of Minnesota.

*Jarrett M. Leas*  
 signature

4-30-2013  
 date

Jarrett M. Leas, Minnesota License No. 42619

Page 1 of 2 A000595702

