

# CERTIFICATE OF LOCATION OF GOVERNMENT CORNER

North Quarter Corner of Section 20  
Township 139 N , Range 27 W , 5th P.M.  
STATE OF MINNESOTA, COUNTY OF Cass



A000595689

OFFICE OF THE COUNTY RECORDER  
CASS COUNTY, MINNESOTA  
CERTIFIED, FILED, AND/OR  
RECORDED ON

8/22/2013 9:17:22 AM

AS DOC #: A000595689

PAGES: 2

REC FEES: 0.00

KATHRYN M. NORBY  
CASS COUNTY RECORDER

BY KF Dep

On \_\_\_\_\_, found a(n): \_\_\_\_\_  
DATE

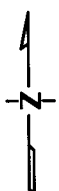
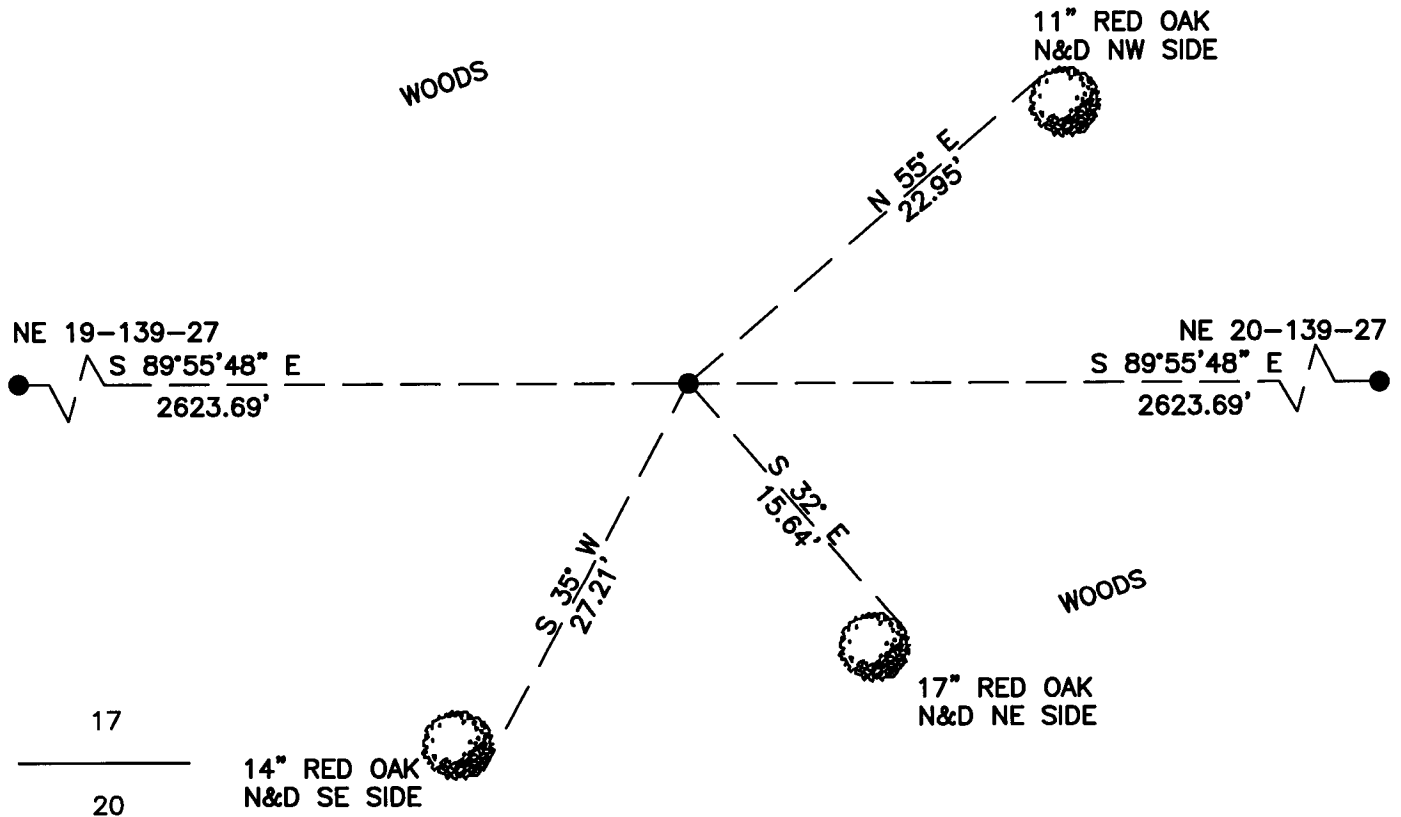
- left monument as found
- lowered monument
- removed monument (explain)
- raised monument

On 3/5/2013, set a(n): 5/8"x24" Rebar With Plastic Cap  
DATE

Stamped "Leas MN 42619" up 0.5'.

See "Statement of Evidence" for further details (on back)

(reserved for recording data)



"SKETCH OF REFERENCE TIES"  
(not to scale - bearings are magnetic)

Ties are measured to center of monument unless otherwise noted.

UNITS =  Metric  English

CASS COUNTY SOUTH COORDINATES

Northing: 352275.152

Easting: 585903.470

NAD 83/2007 Adjustment.

Obtained by RTK GPS observations.

I hereby certify that this survey, plan, or report was prepared by me or under my direct supervision, and that I am a duly Licensed Land Surveyor under the laws of the State of Minnesota.

signature

4-30-2013  
date

Jarrett M. Leas, Minnesota License No. 42619

Page 1 of 2 A000595689



Statement of Evidence

**North Quarter corner of Section 20, Township 139 North, Range 27 West, 5th Principal Meridian.**

- 1864 The US General Land Office, in notes of the subdivision of Township 139 North, Range 27 West, set a post for the original corner and referenced it as follows:  
9" Linn.          N 20° E          23 links                          7" Linn.          S 22° W          27 links  
Said records are on file with the Minnesota Historical Society, St. Paul, Minnesota, copies are filed with the Cass County Surveyor's Office (CCSO).
- 1937 CCC Washburn Lake field book 1, page 8, on file at the DNR office in Brainerd show CCC personnel set an approximate  $\frac{1}{4}$  corner 40 chains from the west between the approximate NE corner of Section 19 and the approximate NE corner of Section 20.
- 2013 KLJ field crews searched the area and found nothing. This corner was set lost by single proportion between the NE 19 and the NE 20. A 5/8" x 24" rebar with plastic cap stamped "Leas MN 42619" was set to mark the corner position and is witnessed with the ties shown on the front of this certificate. Jarrett Leas, RLS #42619, after analysis of record and survey information accepts this monument as the correct perpetuation of the corner.