

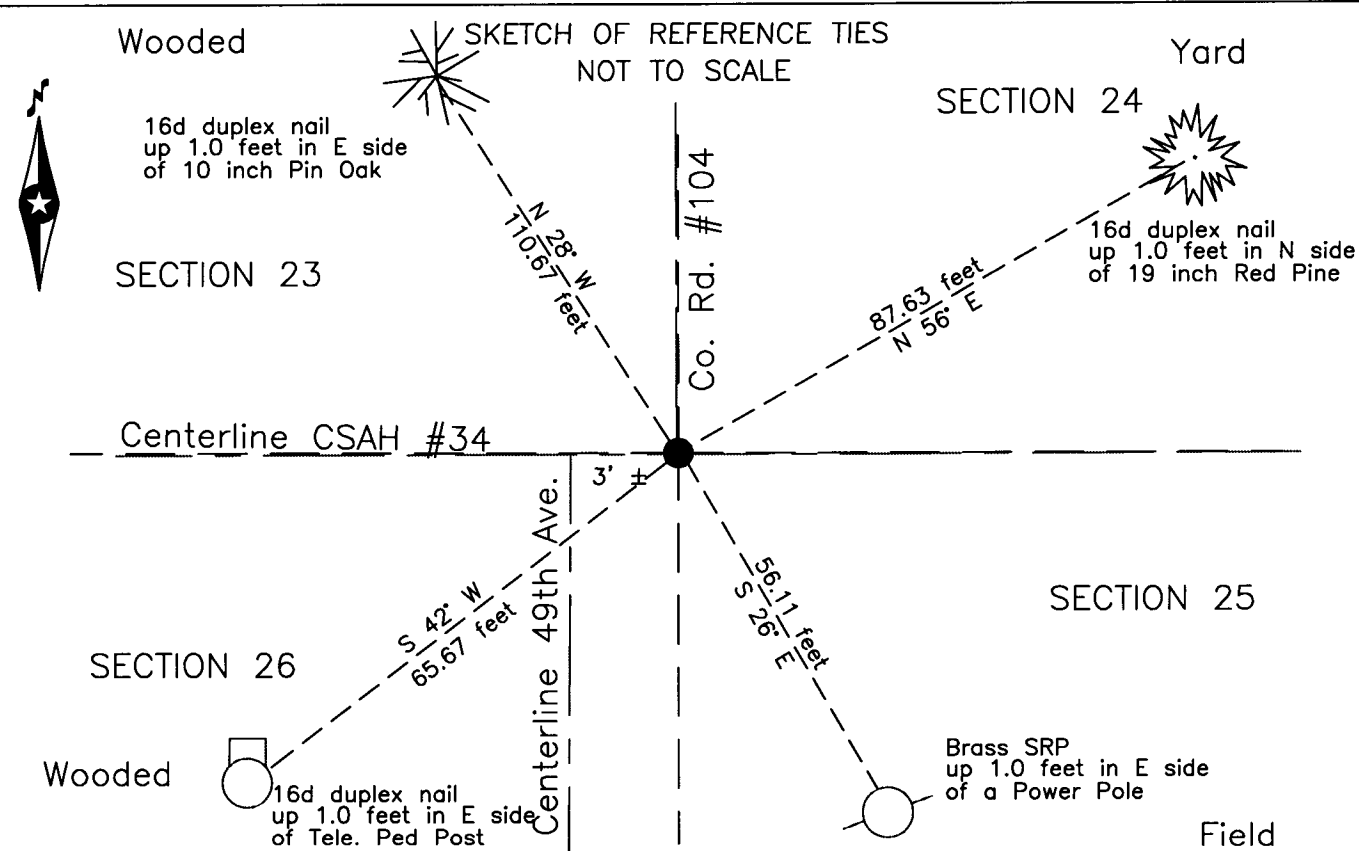
CERTIFICATE OF LOCATION OF GOVERNMENT CORNER

Northeast corner of Section 26, Township 134 N., Range 31 W., 5th P.M.

State of Minnesota, County of Cass

At the corner location shown on the sketch:


On 19 April 2012 found a concrete nail, on the centerline of County Road #104
and centerline of CSAH #34, 3 feet east of centerline of 49th Avenue.
 left monument as found lowered monument removed monument (explain)
 On 17 May 2012 placed a Magnetic concrete nail, on the new centerline of
CSAH #34, after construction.



NOTE:
All bearings are true

Statement of evidence relative to this corner location is on the back of this page.

I hereby certify that this survey, plan or report was prepared by me or under my direct supervision and that I am a duly Licensed Land Surveyor under the laws of the State of Minnesota.


 Terry L. Freeman, Cass County Surveyor
 Date 8/14/13 MN License No. 21367



A000595677
OFFICE OF THE COUNTY RECORDER
CASS COUNTY, MINNESOTA
CERTIFIED, FILED, AND/OR
RECORDED ON
8/22/2013 9:17:10 AM
AS DOC #: A000595677
PAGES: 2
REC FEES: 0.00
KATHRYN M. NORBY
CASS COUNTY RECORDER
 BY KF Dep

Page 1 of 2 A000595677



Index No. R.0-21.0

Statement of Evidence

Northeast corner of Section 26, Township 134 North, Range 31 West, 5th Principal Meridian.

June 1869 T.Walker, General Land Office (GLO) Deputy Surveyor set a post for the original corner in his subdivision of this township and referenced it as follows:
2" Aspen N 3° W 48 links (31.68 feet) 6" Bl. Pine N 2° E 14 links (9.24 feet)
3" Aspen S 54° E 18 links (11.88 feet)
Said records are on file at the Minnesota Historical Society, St. Paul, Minnesota, copies are filed with the Cass County Surveyor's Office (CCSO).

June 1902 May Township Road Order, Supervisors' Road Order, image file 37, on file in the CCSO, indicates a road running due south 3 miles, terminating at the subject corner.

June 1905 May Township Road Order, Supervisors' Road Order, image file 12, on file in the CCSO, indicates a road to run north on the section line between sections 26 and 25 to the subject corner.

Jan. 1908 J.Curo, LS 1428, Cass County Surveyor, Survey Record No. 24, Book A, page 49, on file in the CCSO, states set the NE cor of Sec. 26, by proportionate measurements in all directions, and drive wood stake "with new bearings as follows:"
8" J. Pine N 37°44' W 49.85 feet 10" Poplar stump S 43° W 42.20 feet
8" J. Pine N 43°57' E 60.50 feet

Dec. 1910 H.S. Todd, Deputy Cass County Surveyor, Survey Record No. 24, Book A, page 49, on file in the CCSO, states "set 8x8x36 inch stone in cement at the true NE cor. of Sec. 26".

Feb. 1964 D. Cole, LS 1286, Cass County Engineer, CSAH #34, State Project No. 11-634-01, on file in the Cass County Highway Department (CCHD), indicates the subject corner assumed on centerlines North and south at centerline P.I. Station 273+43.6 which is witnessed as follows:
P. P. NE 48.7 feet Guy P. NW 51.8 feet
T. P. SE 44.5 feet

Nov. 1985 T.Freeman, technician, CCSO, Land Corner Record, on file in the CCSO, notes testimony of County Highway Engineer, Worcester. He saw stone bladed out during road construction.

April 2012 B.Hippen, CCSO technician and P.Swentkofske, CCHD equipment operator, records of the CCSO, prior to reconstruction of CSAH # 034, excavated a 10 foot east-west by 12 foot north-south area based on record dimensions. The dig was 3.5 feet deep to encompass the 3 foot stone monument set in 1910. A PK nail was found at centerline of CSAH #034 and centerline of County Road #104, a 60d spike was found below the bituminous. No evidence of the stone monument was recovered.

May 2012 B.Hippen, technician, records of the CCSO, set a Magnetic concrete nail at the position of the PK nail which fit well with the 60d spike, this position is on the new centerline and witnessed as follows:
10" Pin Oak N 28° W 110.67 feet 19" N. Pine N 56° E 87.63 feet
Tele Ped Post S 42° W 65.67 feet Power Pole S 26° E 56.11 feet

The recovered and established references for the position are shown on the face of this document.

Analysis of the recovered record data, field evidence and survey measurements, indicates that the monument recovered by CCSO in 2012 is the accepted location of this corner.

County Coordinates (Cass County South)

Northing 188168.52

Easting 481767.71