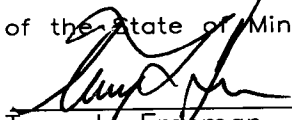


I hereby certify that this survey, plan or report was prepared by me or under my direct supervision and that I am a duly Licensed Land Surveyor under the laws of the State of Minnesota.



Terry L. Freeman, Cass County Surveyor
Date 8/7/13 MN License No. 21367



A000595284

**OFFICE OF THE COUNTY RECORDER
CASS COUNTY, MINNESOTA
CERTIFIED, FILED, AND/OR
RECORDED ON**

8/9/2013 9:00:33 AM

AS DOC #: A000595284

PAGES: 2

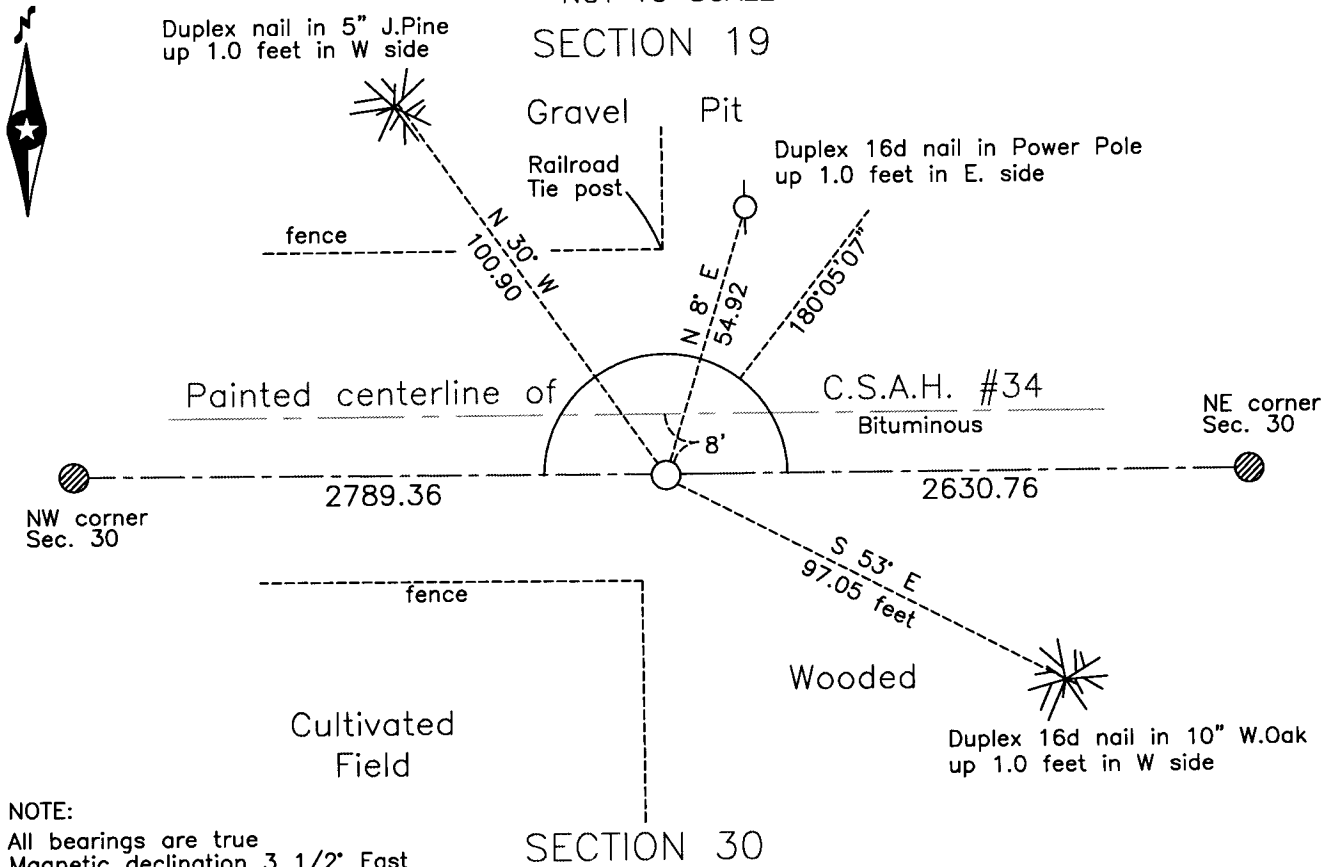
REC FEES: 0.00

**KATHRYN M. NORBY
CASS COUNTY RECORDER**

BY SR Dep

CERTIFICATE OF LOCATION OF GOVERNMENT CORNER

SKETCH OF REFERENCE TIES
NOT TO SCALE



NOTE:
All bearings are true
Magnetic declination 3 1/2' East

North Quarter corner of Section 30, Township 134 N., Range 30 W., 5th P.M.
State of Minnesota, County of Cass

At the corner location shown on the sketch:

On _____ found _____

left monument as found lowered monument removed monument (explain)
On 19 July 12 placed _____ an Aluminum tube with Aluminum cap, down 0.5 foot
at position defined by the 1964 Highway Department record and fence evidence.

Statement of evidence relative to this corner location is on the back of this page.



Index No. R.0-03.0

Statement of Evidence

North Quarter corner of Section 30, Township 134 North, Range 30 West, 5th Principal Meridian.

- April 1869 N. Butler, General Land Office (GLO) Deputy Surveyor, set a post for the original corner in his subdivision of this township and referenced it as follows:
 14" Black Pine N 5°E 42 links (27.72 feet) 14" Black Pine S 25°W 64 links (42.24 feet)
 Said records are on file with the Minnesota Historical Society, St. Paul, Minnesota, copies are filed with the Cass County Surveyor's Office (CCSO).

- Feb. 1964 D. Cole, LS 1286, Cass County Engineer, CSAH #34, State Project No. 11-634-01, on file in the Cass County Highway Department (CCHD), indicates the subject corner assumed on fence line to the south at centerline P.O.T. Station 353+93.6. The records show the position is 7.5 feet south of the new centerline of CSAH No. 34. The cross-section on Sheet 49 confirms the latitudinal location of the old road and the plan/profile on Sheet 15 indicates the area to have been excavated approximately 2 feet below the old road grade. The records include the following references for the centerline point:

Nail & disc 5" Pine	NW	82.3 feet	Nail & disc 3" Pine	NE	71.9 feet
Nail & disc 5" Oak	NE	56.7 feet			

- July 1999 B. Hippen and C. Loe, technicians, records of the CCSO, traversed to the area and made a search for original and subsequent corner evidence. The centerline of the existing road and fence lines to the north and south were located. No other evidence was recovered.

- Oct. 1999 B. Hippen and C. Loe, technicians, records of the CCSO, returned to the position and set a Mag nail at the position defined by the 1964 record and witnessed as follows:

8" J. Pine	N 38° W	112.38 feet	P. Pole	N 8° E	54.92 feet
10" W. Oak	S 53° E	97.05 feet			

- April 2004 B. Grivna, LS 17253, Certificate of Survey, on file in Westwood Professional Services Office and the CCSO, indicates a monument found.

- Oct. 2006 C.M. Conner, LS 41643, Certificate of Survey, on file in Witseth, Smith and Nolting Office and the CCSO, indicates a P.K. nail found.

- July 2012 B.Hippen, technician, records of the CCSO, set a 1 inch by 30 inch aluminum tube with aluminum cap, in place of the recovered monument, down 0.05 foot, 8 feet, more or less, South of new centerline. The monument, recovered and established references for the position are shown on the face of this document.

Analysis of the recovered record data, field evidence and survey measurements, indicates that the apparent position which was documented by the CCHD in 1963, is accepted as the best evidence for the perpetuation of the obliterated original corner.

County Coordinates (Cass County South)

Northing 188319.89

Easting 457967.73