

CERTIFICATE OF LOCATION OF GOVERNMENT CORNER

E1/4 Corner of Section 17, Township 140N, Range 29W, 5th p.m., State of Minnesota, County of Cass

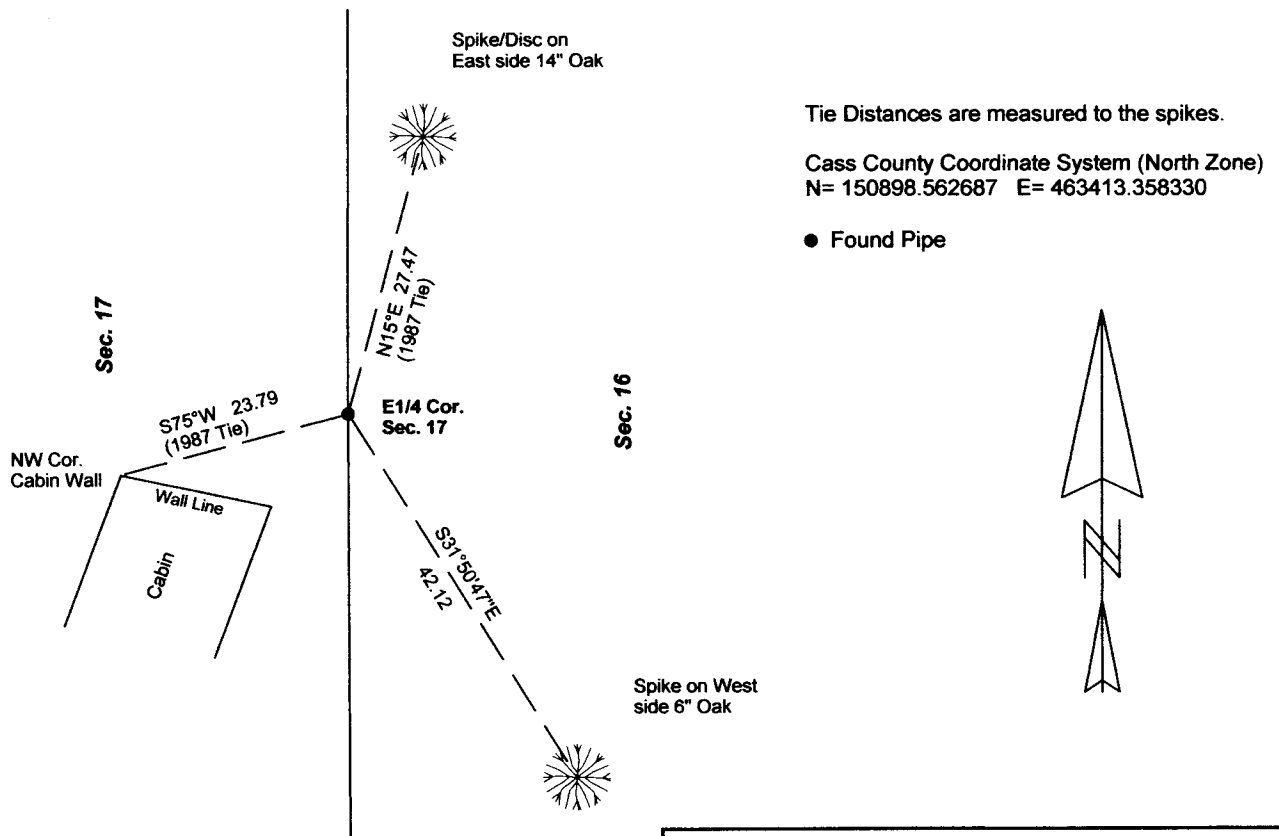
At the corner location shown on the sketch:

On 02/14/2013 found a 3/4" PIPE, UP 2.0' +/-
Date

left monument as found lowered monument removed monument (explain)

On _____ placed a _____
Date

SKETCH OF REFERENCE TIES



Tie Distances are measured to the spikes.

Cass County Coordinate System (North Zone)
N= 150898.562687 E= 463413.358330

● Found Pipe

NOT TO SCALE

Statement of evidence relative to this corner location is on back of page.

I hereby certify that this document and the data contained herein was prepared by me or under my direct supervision.

Marvin R. Kohout 22 July 2013
Marvin R. Kohout Date

Registration No. 17774

Land surveyor

OFFICE OF COUNTY RECORDER



A000594826

OFFICE OF THE COUNTY RECORDER
CASS COUNTY, MINNESOTA
CERTIFIED, FILED, AND/OR
RECORDED ON

7/25/2013 3:07:41 PM

AS DOC #: A000594826

PAGES: 2
REC FEES: 0.00

KATHRYN M. NORBY
CASS COUNTY RECORDER

BY SR Dep

Page 1 of 2 A000594826



INDEX NO. L.0 - 9.0

STATEMENT OF EVIDENCE

EAST QUARTER CORNER OF SECTION 17, TOWNSHIP 140N, RANGE 29W, 5TH P.M.

- JAN 1870 ORIVILLE SMITH, DEPUTY GOVERNMENT SURVEYOR, SET A POST TO MARK THE CORNER LOCATION. REFERENCES:
6" JACK PINE N65E 14 LINKS 7" JACK PINE N63W 10 LINKS
- SEPT 1919 ELMER B. HORST, LS NO. 376, SET A WOOD POST CURO BOOK NO. 158 PAGE 49.
- SEPT 1950 HAROLD J. CURO, LS NO. 3417, WAS SHOWN A 1/2" PIPE THAT MARKED THE CORNER LOCATION, CURO BOOK 233 PAGE 139
- MAR. 1977 CURO BOOK NO. 165 PAGE 55 HAS 3/4" PIPE MARKING THE CORNER LOCATION
REFERENCES: 12" SPRUCE N45W 8.83 FEET 2" W. PINE SOUTH 14.05 FEET
NE CORNER FOUNDATION CABIN N70W 23.93 FEET
SE CORNER FOUNDATION CABIN S45W 40.42 FEET
- 1978 ROGER MUSTONEN, LS NO. 11946, WHILE WORKING FOR WILLIAM J. SPAIN JR, LS NO. 2003, FOUND A CAPPED IRON MONUMENT. CERTIFICATE OF LOCATION OF GOVERNMENT CORNER DOCUMENT NO. 302272.
- 1987 DAVID S. LANDECKER, LS NO. 17008, LANDECKER & ASSOCIATES, INC. FOUND AND ACCEPTED MONUMENT. CERTIFICATE OF LOCATION OF GOVERNMENT CORNER DOCUMENT NO. 302272. REFERENCES:
14" BALSAM N83W 9.23 9" R. OAK N15E 27.47
4" BURR OAK S82E 32.18 4" W. PINE S28E 14.27
- JAN 1988 LANDECKER & ASSOCIATES, INC. SKETCH INDICATING A MONUMENT FOUND CCSO DOCUMENT NO. 7059.
- FEB. 1988 DAVID S. LANDECKER, LS NO. 17008, CERTIFICATE OF SURVEY SHOWS FOUND 1/2" PIPE CCSO DOCUMENT NO. 1374
- 1995 TERRY L. FREEMAN, LS NO. 21367, LANDECKER & ASSOCIATES, INC. CERTIFICATE OF SURVEY SHOWS FOUND MONUMENT CCSO DOCUMENT NO. 2984.
- FEB. 2013 MARVIN R. KOHOUT, LS NO. 17774, KOHOUT LAND SURVEYING, FOUND A 3/4" PIPE UP 2.0 FEET. FOUND PIPE WAS ACCEPTED AS MARKING THE LOCATION OF THE E1/4 CORNER OF SECTION 17.

Handwritten signature: Terry L. Freeman