

CERTIFICATE OF LOCATION OF GOVERNMENT CORNER

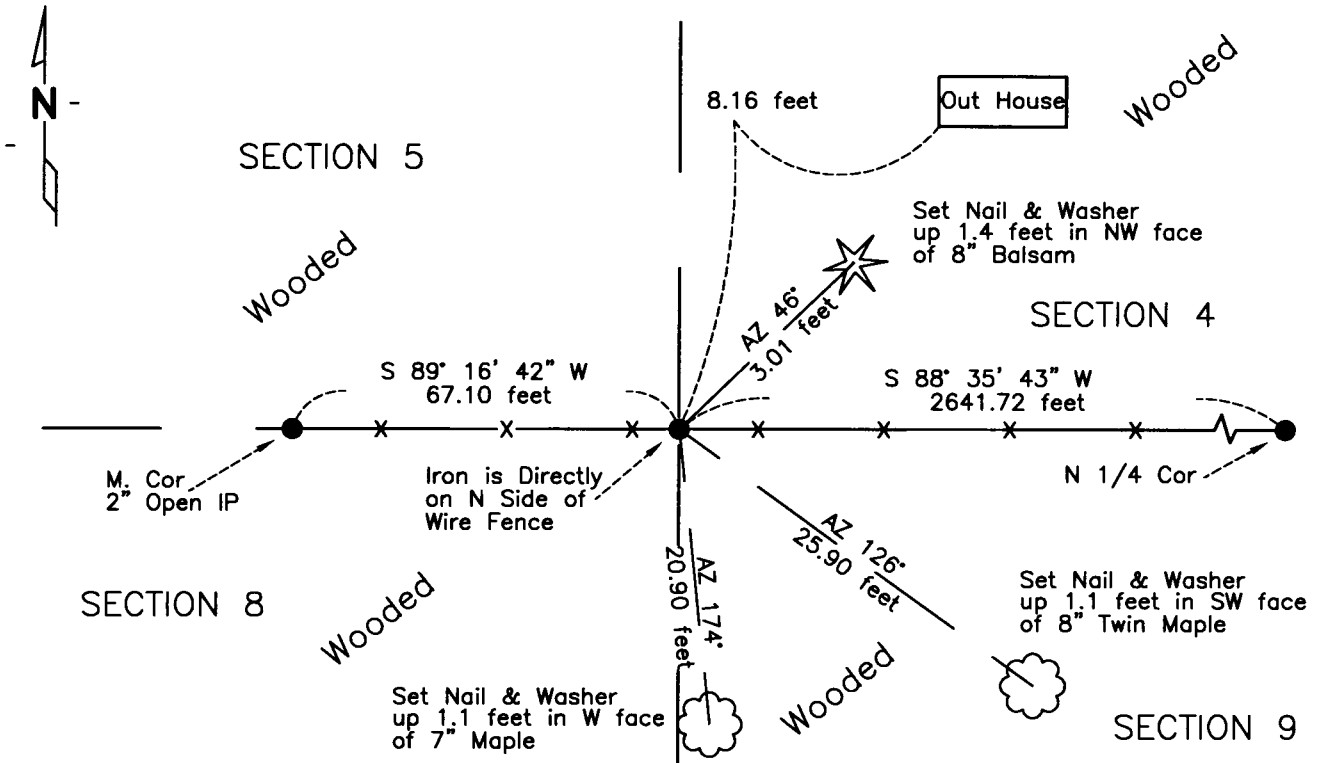
Northwest Corner of Section 9, Township 139 N., Range 26 W., 5th P.M.

STATE OF MINNESOTA, County of CASS

At the corner location shown on the sketch:

- On 05/02/13 found a 1-1/4" OD Solid Pin, up 1.2'
- left monument as found, lowered monument, removed monument (explain)
- On _____ DATE _____

SKETCH OF REFERENCE TIES
NOT TO SCALE



NAD83 (1996 ADJUSTMENT)
CASS COUNTY NORTH DATUM

N= 126421.782
E= 557098.019

Statement of evidence relative to
this corner is on back of page

I hereby certify that this document and the
data contained herein was prepared by me or
under my direct supervision.

Craig E. Johnson 05/22/13
Craig E. Johnson DATE

Registration No. 44530

- Land surveyor,
- County Surveyor,



A000593572

OFFICE OF THE COUNTY RECORDER
CASS COUNTY, MINNESOTA
CERTIFIED, FILED, AND/OR
RECORDED ON

6/17/2013 12:42:56 PM

AS DOC #: A000593572

PAGES: 2

REC FEES: 0.00

KATHRYN M. NORBY
CASS COUNTY RECORDER

BY SR _____ Dep

Statement of Evidence:**E-9, Northwest corner of Section 9, Township 139 North, Range 26 West, 5th Principal Meridian.**

- 1863 Alonzo L. Thornton, General Land Office (GLO) Deputy Surveyor set a post for the original corner and referenced it as follows:
- | | |
|--|---|
| 10" R. Oak N 65° E 1.40 links (0.9 feet) | 22" W. Pine N 12° W 1.08 links (0.7 feet) |
| 20" W. Pine S 56° E 43 links (28.4 feet) | 22" W. Pine S 55° W 30 links (19.8 feet) |
- Jun. 1955 Dean M. Anderson, Registered Land Surveyor No. 3091, References the NW corner of Section 9 as depicted on the plat of PATTERSON LAKE SHORE LOTS on file at the Cass County Records Office.
- Mar. 1956 Dean M. Anderson, Registered Land Surveyor No. 3091, References the South line of Government Lot 8 as depicted on the plat of REES ANCHORAGE on file at the Cass County Records Office.
- Jan. 1967 Dean M. Anderson, Registered Land Surveyor No. 3091, References the NW corner of Section 9 as depicted on a Plat Of Survey on file at the Cass County Records Office.
- Sep. 1968 R.F. Schneider, Registered Land Surveyor No. 5740, References the NW corner of Section 9 as depicted on a Plat Of Survey on file at the Cass County Records Office.
- Aug. 1971 Dean M. Anderson, Registered Land Surveyor No. 3091, Completed a survey in Government Lot 6 as depicted on a Plat Of Survey on file at the Cass County Records Office.
- Oct. 2001 Roger Mustonen, Registered Land Surveyor No. 11946, references the East line of Government Lot 8 as depicted on a Certificate of Survey on file at the Cass County Records Office.
- May 2013 J. McDonald found a 1-1/4" OD Solid Pin. Bolton & Menk accepted the found pin as the corner and set reference ties set by Bolton & Menk, as depicted on the face of this certificate.