

CERTIFICATE OF LOCATION OF GOVERNMENT CORNER

North Quarter Corner of Section 36
Township 139 N , Range 28 W , 5th P.M.
STATE OF MINNESOTA, COUNTY OF Cass



A000593571

OFFICE OF THE COUNTY RECORDER
CASS COUNTY, MINNESOTA
CERTIFIED, FILED, AND/OR
RECORDED ON

6/17/2013 12:42:55 PM

AS DOC #: A000593571

PAGES: 2

REC FEES: 0.00

KATHRYN M. NORBY
CASS COUNTY RECORDER

BY SR Dep

On 1/2/2013, found a(n): 2" Iron Pipe Badly Bent With Base
Still Standing Vertical. Pipe was Removed and Replaced as Described

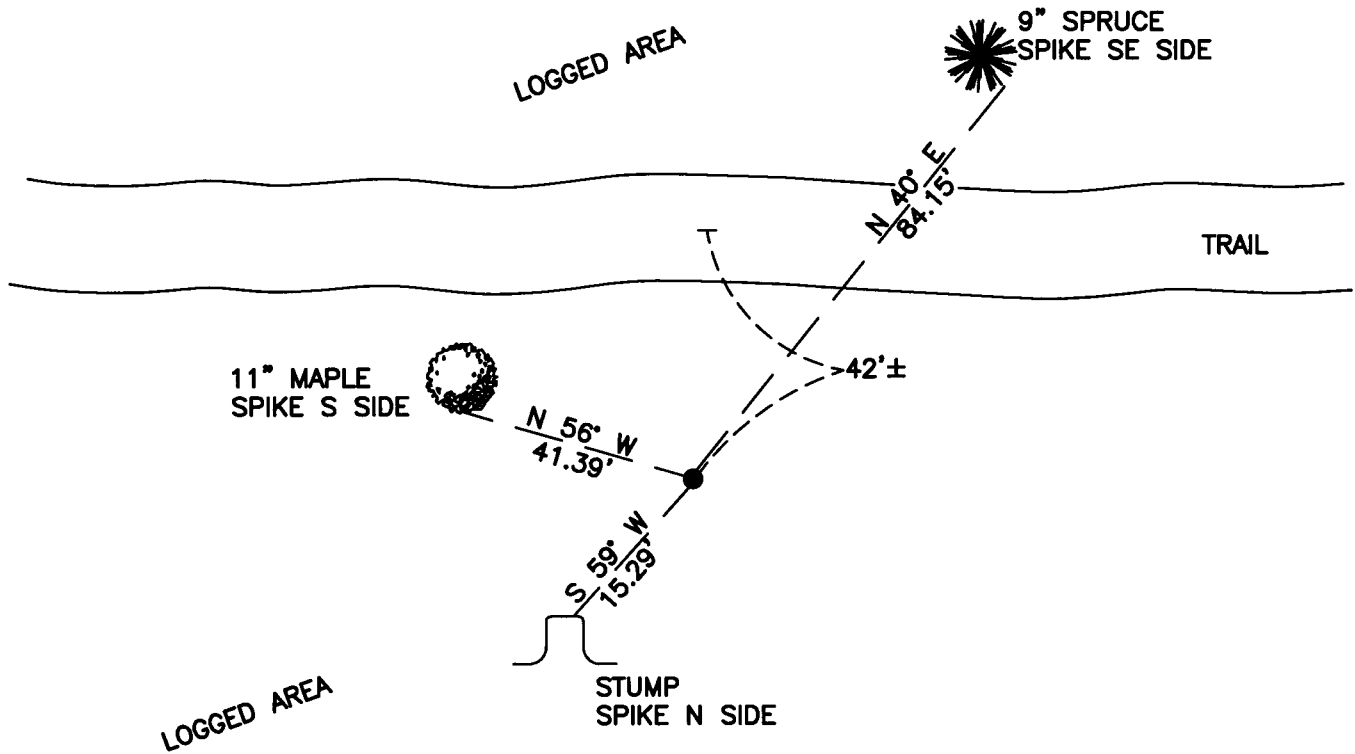
Below.

- left monument as found
- lowered monument
- removed monument (explain)
- raised monument

On 1/2/2013, set a(n): 5/8" X 24" Rebar With Plastic Cap
Stamped "Leas MN 42619" Flush With Ground in Place of 2" Bent Pipe.

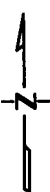
See "Statement of Evidence" for further details (on back)

(reserved for recording data)



25

36



"SKETCH OF REFERENCE TIES"

(not to scale - bearings are magnetic)

Ties are measured to center of monument unless otherwise noted.

UNITS = Metric English

CASS COUNTY SOUTH COORDINATES

Northing: 341896.870

Easting: 572985.421

NAD 83/2007 Adjustment.
Obtained by RTK GPS observations.

I hereby certify that this survey, plan, or report was prepared by me or under my direct supervision, and that I am a duly Licensed Land Surveyor under the laws of the State of Minnesota.

signature

4-30-2013
date

Jarrett M. Leas, Minnesota License No. 42619

Page 1 of 2 A000593571



Statement of Evidence

North Quarter corner of Section 36, Township 139 North, Range 28 West, 5th Principal Meridian.

- 1864 The US General Land Office, in notes of the subdivision of Township 139 North, Range 28 West, set a post for the original corner and referenced it as follows:
 9" Aspen N 37° E 19 links 7" W. Birch N 55° E 51 links
 Said records are on file with the Minnesota Historical Society, St. Paul, Minnesota, copies are filed with the Cass County Surveyor's Office (CCSO).
- 1919 B. Clark, LS 231, CCSO, Survey Record Number 434, Book C, page 316, on file in the CCSO, states, "went to the estab. ¼ S. cor. bet. Sec., 25-36." Page 339 states, Then went to the ¼ S. bet. Sec. 25-36. Found temp hub so set iron pipe for true cor. 4 ft long 2 ½ in diam. No trees or stone near for witness." Page 317 notes the following witnesses:
 8" Basswood S 28° E 30.2 feet 11" Basswood N 55° W 56.8 feet
- 1922 B. Clark, LS 231, County Resurvey, on file in the Cass County Records Office, as Document Number 69794, indicates Iron Monument.
- 1939 CCC Washburn Lake field book 12, page 25, on file at the DNR office in Brainerd show CCC personnel found a 2" I.P. 2' above the ground at 2740' from the east 28' north of random line.
- 1940 CCC Washburn Lake field book 16, Page 1 on file at the DNR office in Brainerd show CCC personnel, at 2638.8' from the east, tied into an iron pipe. Book 16, page 6, at 2641' intersected the north section line; they found an iron pipe 4.3' west of line.
- 2003 B. Hippen and T. Anderson, CCSO, technicians, CCSO file # 2003.013, found 2" outside diameter iron pipe, run over by a skidder and badly bent, spin for plumb and witnessed as follows:
 6" R. Pine S 9° W 118.85 feet 6" Spruce N 40° E 84.15 feet
 8" Maple N 56° W 41.39 feet
- 2013 A KLJ survey crew found a 2" iron pipe badly bent with the base still vertical. The 2" iron pipe was removed and replaced with a 5/8"x24" rebar with a plastic cap stamped "Leas MN 42619". The two remaining 2003 county ties fit the position of the reset monument. The new monument is witnessed with the ties shown on the front of this certificate. Jarrett Leas, RLS #42619, after analysis of record and survey information accepts this monument as the correct perpetuation of the corner.